



Bank of Japan Working Paper Series

Long-term interest rates and bank loan supply: Evidence from firm-bank loan-level data

Arito Ono^{*}
a-ono@tamacc.chuo-u.ac.jp

Kosuke Aoki^{**}
kaoki@e.u-tokyo.ac.jp

Shinichi Nishioka^{***}
shinichi.nishioka@boj.or.jp

Kohei Shintani^{****}
kouhei.shintani@boj.or.jp

Yosuke Yasui^{****}
yosuke.yasui@boj.or.jp

No.16-E-2
March 2016

Bank of Japan
2-1-1 Nihonbashi-Hongokucho, Chuo-ku, Tokyo 103-0021, Japan

^{*} Faculty of Commerce, Chuo University

^{**} Graduate School of Economics, University of Tokyo

^{***} Research and Statistics Department

^{****} Research and Statistics Department (currently Cabinet Office)

Papers in the Bank of Japan Working Paper Series are circulated in order to stimulate discussion and comments. Views expressed are those of authors and do not necessarily reflect those of the Bank.

If you have any comment or question on the working paper series, please contact each author.

When making a copy or reproduction of the content for commercial purposes, please contact the Public Relations Department (post.prd8@boj.or.jp) at the Bank in advance to request permission. When making a copy or reproduction, the source, Bank of Japan Working Paper Series, should explicitly be credited.

**Long-term interest rates and bank loan supply:
Evidence from firm-bank loan-level data[†]**

Arito Ono[‡], Kosuke Aoki, Shinichi Nishioka, Kohei Shintani, and Yosuke Yasui

Abstract

This paper examines the effects of long-term interest rates on bank loan supply. Using a simple mean-variance model of bank portfolio selection subject to the value-at-risk (VaR) constraint, we make theoretical predictions on two transmission channels through which lower long-term interest rates increase loan supply: (i) the portfolio balance channel and (ii) the bank balance sheet channel. We construct a unique and massive firm-bank loan-level panel dataset for Japan spanning the period 2002–2014 and test our theoretical predictions to find the following. First, an unanticipated reduction in long-term interest rates increased bank loan supply, which lends support to the existence of the portfolio balance channel. Second, banks that enjoyed larger capital gains on their bond holdings due to a decline in interest rates significantly increased their loan supply, which lends support to the existence of the bank balance sheet channel. Further, the bank balance sheet channel was stronger in the case of loans to smaller, more leveraged, and less creditworthy firms, which suggests that a stronger balance sheet leads banks to increase their loan supply to credit-constrained and riskier firms.

JEL classifications: E44, E52, G11, G21

Keywords: portfolio balance channel, bank balance sheet channel, value-at-risk constraint

[†] The authors thank Seisaku Kameda, Daisuke Miyakawa, Koji Nakamura, Toshitaka Sekine, Shigenori Shiratsuka, Toshinao Yoshiba, and staff members of the Bank of Japan for valuable comments. The authors are also grateful to Teikoku Databank, Ltd. for collaborating in the construction of the dataset used for the analysis. Aoki gratefully acknowledges financial support from the Center for Advanced Research in Finance (CARF, University of Tokyo) and the JSPS Grant-in-Aid for Scientific Research No. 25380223, while Ono gratefully acknowledges financial support through the JSPS Grants-in-Aid for Scientific Research Nos. 25220502 and 15H06619. The views expressed in this paper are ours and do not necessarily reflect those of the Bank of Japan or any of the institutions with which we are affiliated.

[‡] Corresponding author: Faculty of Commerce, Chuo University, 742–1 Higashinakano, Hachioji-shi, Tokyo 192–0393, Japan. Tel: +81–42–674–3595, Email: a-ono@tamacc.chuo-u.ac.jp

1. Introduction

Since the onset of the recent global financial crisis, central banks around the world have initiated unconventional monetary policies to stimulate economic activity and prevent deflation. One of the objectives of unconventional monetary policy is to reduce long-term interest rates, and a number of studies provide empirical evidence that unconventional monetary policy in advanced countries had the intended effect of lowering long-term interest rates (e.g., Fukunaga et al. 2015, Gagnon et al. 2011, Hosono and Isobe 2014, Krishnamurthy and Vissing-Jorgensen 2011). It is not well understood, however, how banks' lending behavior is affected by the decline in long-term interest rates brought about by those policy measures. In particular, while there is some evidence that unconventional monetary policy and/or lower long-term interest rates have led institutional investors to rebalance their portfolios towards riskier assets (Carpenter et al. 2015, Joyce et al. 2014), the evidence on bank loan supply is limited.

Against this background, the present study aims to provide simple but strong evidence that the decline in long-term interest rates has indeed stimulated bank loan supply. To do so, we construct a unique and massive firm-bank loan-level panel dataset for Japan covering the period 2002–2014, which makes it possible to address the identification challenge that the effect of long-term interest rates on loan supply needs to be disentangled from the effect on loan demand by controlling for time-varying unobserved firm heterogeneity with firm-year fixed effects.

More specifically, we first construct a simple mean-variance model of bank portfolio

selection subject to the value-at-risk (VaR) constraint, in which the VaR constraint is similar to that in Adrian and Shin (2011). We consider a bank that invests in two kinds of assets: loans and government bonds (“bonds” hereafter), taking the prices of those assets as given. Our simple framework predicts that a change in the price of bonds (i.e., long-term interest rates) affects bank loan supply via two transmission channels. The first channel is what we shall call the “portfolio balance channel.” Specifically, we argue that the effect of a reduction in long-term interest rates on loan supply depends on the trade-off between the “substitution effect” and the “income effect.” The substitution effect means that, in response to the decline in long-term interest rates, a bank subject to the VaR constraint will increase its loan supply because the decrease in income from bond holdings makes it more profitable for the bank to hold loans. In contrast, the income effect means that the bank will reduce its loan supply because under the VaR constraint the decrease in income from bond holdings makes it costlier than before for the bank to hold loans. In sum, the effect of lower long-term interest rates on loan supply depends on the relative size of these two opposing effects, and a lower interest rate increases loan supply if the substitution effect is larger than the income effect. The second channel is the bank balance sheet channel. When interest rates fall and bond prices go up, a bank’s net worth increases through the capital gains on the bonds that it holds. The stronger balance sheet allows the bank to increase its loan supply. We call this the “net worth effect.”

Based on this framework, we empirically examine whether these effects were at work in banks’ lending behavior to Japanese firms during the period 2002–2014. More specifically, to examine

the net worth effect (bank balance sheet channel), we analyze the cross-bank variation in bank net worth caused by changes in long-term interest rates, which are the same across banks, and banks' interest rate risk exposure (i.e., bond holdings), which differs across banks. In order to identify shifts in bank loan supply we use firm-bank match-level loan data, which allow us to identify multiple loans to the same firm in the same year by different banks. Using such data and controlling for firm-year fixed effects to take firms' unobservable loan demand into account, we examine the relationship between changes in individual firms' loans from different banks and shocks to the net worth of these banks. Regarding the income effect and the substitution effect (portfolio balance channel), we examine how unanticipated changes in long-term interest rates affect bank loan supply. Because changes in long-term interest rates are common across banks, we cannot empirically identify cross-bank variations in the income and substitution effect. However, the rich panel data set used in this study allows us to examine which of these two opposing effects is dominant for all banks together while controlling for various time-varying firm and bank characteristics and time-invariant firm and bank fixed effects that might affect individual bank loan supply.

We obtain the following empirical results. First, we find that unanticipated reductions in long-term interest rates increased bank loan supply, which suggests that the substitution effect is indeed larger than the income effect. Our estimation shows that a 1 percentage point reduction in long-term interest rates raises the growth rate of a bank's loan supply by 1.6 percentage points. Second, banks that enjoyed larger capital gains on their bond holdings significantly increased their

loan supply, which provides evidence that the bank balance sheet channel (net worth effect) plays a role. Based on our estimation result, a one standard deviation increase in a bank's capital due to capital gains relative to its total assets (equivalent to a 0.18 percentage point increase in the ratio of bank capital to total assets) raises the growth rate of a bank's loan supply by 0.8 percentage points. Given that the mean of the loan growth rate during the observation period was -5.2 percent, the substitution effect (net of the income effect) and the net worth effect are of modest but not negligible economic significance. Further empirical investigations we conduct show that the bank balance sheet channel is stronger with regard to loans to smaller, more leveraged, and less creditworthy firms, which suggests that when banks' balance sheet strengthens they tend to increase loan supply to credit-constrained and riskier firms.

This study is closely related to the following two strands of literature. First, a growing number of theoretical and empirical studies examine the transmission channels of monetary policy, highlighting channels other than the standard interest rate channel. For instance, theoretical models developed by, among others, Bernanke and Gertler (1989) and Kiyotaki and Moore (1997), show that a negative shock to a borrower's net worth aggravates the financial frictions between the borrower and its lenders, and hence reduces borrowing (firm balance sheet channel). In a similar vein, Gertler and Karadi (2011), Holmstrom and Tirole (1997), and Stein (1998) show that a negative shock to a financial intermediary's net worth worsens the financial frictions between the financial intermediary and its depositors, and reduces its lending capacity (bank balance sheet channel). While there are a

number of empirical studies that provide evidence of the bank balance sheet channel as a transmission channel of monetary policy, most of these employ either aggregate data (e.g., Bernanke and Blinder 1992, Kashyap et al. 1993) or bank-level data (e.g., Hosono 2006, Kashyap and Stein 2000), which cannot clearly disentangle the effects of monetary policy on loan supply and loan demand. Against this background, recent studies, including Hosono and Miyakawa (2014) and Jiménez et al. (2012), have used firm-bank loan-level data to identify the effect of bank net worth on loan supply.¹

Another recent strand of the literature investigates the effect of unconventional monetary policy on asset prices and how the induced changes in asset prices affect investors' portfolios. As mentioned earlier, a number of empirical studies find that unconventional monetary policy reduces long-term interest rates (e.g., Fukunaga et al. 2015, Gagnon et al. 2011, Hosono and Isobe 2014, Krishnamurthy and Vissing-Jorgensen 2011). In addition to the standard interest rate channel that works through changes in loan demand, lower long-term interest rates may lead investors to shift their portfolios toward assets other than long-term government bonds and boost the price of those other assets; this is the so-called "portfolio balance channel" (Joyce et al. 2014). Carpenter et al. (2015) and Joyce et al. (2014) respectively find evidence that institutional investors shifted their portfolios away from government bonds towards riskier assets in response to the Federal Reserve's asset purchases program and the Bank of England's quantitative easing (QE). From a theoretical perspective, the

¹ To distinguish bank loan supply shocks from loan demand shocks, a growing number of empirical studies have been using firm-bank loan-level data. Examples include the studies by Khwaja and Mian (2008) and Schnabl (2012) on the supply-side impact of international financial crises, and Duchin and Sosyura (2014) and Giannetti and Simonov (2013) on the effect of public capital injections to banks during crises. Also see Hosono and Miyakawa (2015) for an extensive survey of the identification problem.

portfolio balance channel may also apply to banks; however, as far as we are aware, there are few empirical studies on this issue, likely because in many countries government bonds make up only a small share of banks' assets. However, as will be seen below, this is not the case for Japan, where the share of government bonds in banks' portfolios has grown, while that of bank loans has stagnated.

This study is placed at the intersection of these two strands of literature.² Note, however, that instead of focusing on the effect of monetary policy on bank loan supply, the present study focuses on the effect of long-term interest rates on bank loan supply. There are two reasons for doing so. First, there is a consensus that monetary policy affects real activity through its effects on long-term interest rates, even though the particular mechanisms through which unconventional monetary policy affects long-term interest rates remains a subject of debate.³ As will be shown in our simple model in Section 3, banks determine their portfolio composition given the expected return of assets (loans and bonds in our model). For the sake of simplicity, we make no *a priori* assumptions on the transmission mechanism of monetary policy to long-term interest rates. Instead, we take changes in long-term interest rates as our point of departure and examine whether we find any evidence of the portfolio

² Note, however, that the portfolio balance channel in the present study is slightly different from that discussed in the literature on unconventional monetary policy. For example, the portfolio balance channel in Joyce et al. (2014) relies on the existence of the so-called "preferred-habitat" of different investors that may have peculiar investment motives other than expected return and risk, while the portfolio balance channel in the present study relies on the net effect of the substitution and income effects on banks' portfolio selection under the VaR constraint.

³ There are a number of theoretical and empirical studies that discuss whether unconventional monetary policies such as quantitative easing (QE) and the Large-Scale Asset Purchase Program (LSAP) affect long-term interest rates. For instance, Eggertsson and Woodford (2003) theoretically argue that under certain conditions a central bank's asset purchases are irrelevant beyond their effect on private agents' expectations about the future course of monetary policy (signaling effects). In contrast, Krishnamurthy and Vissing-Jorgensen (2013) highlight the role of the scarcity channel, in which the purchase of government bonds by central banks indeed affects bond prices (long-term interest rates).

balance channel. Simultaneously, we examine whether we find evidence of the bank balance sheet channel, since changes in long-term interest rates bring about capital gains or losses. Second, if we were to focus on monetary policy rather than long-term interest rates, it would be much harder – if not impossible – to disentangle the monetary policy stance and economic conditions.⁴ Note that, in order to examine the effect of long-term interest rates on bank loan supply, we need to single out exogenous changes in long-term rates that are orthogonal to banks' lending behavior to avoid the endogeneity problem. To do so, we employ long-term *forward* interest rates as a proxy for the expected return on bonds, since changes in forward rates are less likely to be affected by current economic conditions than changes in spot interest rates or changes in monetary policy.

The remainder of the paper is organized as follows. Section 2 briefly describes developments in monetary policy and bank portfolios in Japan in the 2000s. Section 3 then presents our simple mean-variance model of bank portfolio selection subject to the VaR constraint, which provides empirical predictions. Next, Section 4 explains our data and sample selection, the empirical strategy we employ, and the variables, while Section 5 presents the empirical results. Finally, Section 6 concludes and discusses topics for future research.

⁴ Previous studies examining the impact of monetary policy on loan supply rely on settings where monetary policy tends to be relatively independent of economic conditions. For example, Jiménez et al. (2012), focusing on Spain, argue that the monetary policy of the ECB has been fairly exogenous for countries on the European periphery such as Spain, while Ioannidou et al. (2015) use observations for Bolivia, a country that has been characterized by a high level of dollarization and for which, as a result, monetary policy is essentially set by the Federal Reserve. Obviously, the situation in Japan is quite different, so that the strategies employed in these studies would not work in our setting.

2. Background: Developments in monetary policy and bank portfolios in Japan

As mentioned, we use a firm-bank matched loan-level dataset that covers not only large listed firms but also unlisted small and medium-sized enterprises (SMEs) and spans the period from 2002 to 2014. The period covered by our data includes not only periods of monetary easing through unconventional policies but also a period, in the mid-2000s, when the Bank of Japan exited from quantitative easing, so that there are sufficient cyclical fluctuations in long-term interest rates. In addition, given that Japan has a predominantly bank-based financial system, bank lending plays a prominent role in the provision of funds especially to SMEs that find it difficult to raise funds in capital markets, so that Japan provides a good case study of the impact of interest rates on bank loan supply. To provide some background for our analysis, this section briefly discusses developments in Japan's monetary policy, interest rates, and banks' asset portfolios in the 2000s using aggregate data.

Figure 1 presents developments in short-term interest rate, long-term interest rates, and the amount of Japanese government bonds (JGBs) held by the Bank of Japan (BOJ). Following the collapse of the dot-com bubble in 2000, the BOJ embarked on its QE policy in March 2001, which set bank reserves as the policy target and introduced forward guidance using the Consumer Price Index as the instrument to tell the public under what conditions the BOJ would exit from QE.⁵ QE effectively lowered the short-term policy rate to zero. At the same time, the amount of JGBs held by the Bank of Japan increased substantially and long-term interest rates declined. The BOJ ended QE in March 2006

⁵ Specifically, in its policy statement on March 19, 2001, the BOJ announced that the QE will stay in place until the inflation rate measured by the CPI (excluding perishables) is expected to stabilize at more than zero percent.

and raised the policy target rate to 0.25% in July of the same year. Following the Great Recession, the BOJ started “Comprehensive Monetary Easing” in October 2010. Under Comprehensive Monetary Easing, the BOJ purchased a variety of assets including exchange-traded funds (ETFs) and Japan real estate investment trusts (J-REITs) as well as JGBs. In April 2013, the BOJ introduced “Quantitative and Qualitative Monetary Easing (QQE),” under which it started purchasing massive amounts of JGBs including bonds with longer remaining maturities to increase the monetary base. QQE resulted in zero short-term rates and lower long-term rates.

Next, Figure 2 shows (a) the ratio of Japanese banks’ bond holdings to total loans outstanding, (b) the annual growth rate of loans outstanding to corporations, and (c) the average loan interest rate. The ratio of bonds to loans increased until the BOJ started QQE, which suggests that Japanese banks increased their exposure to interest rate risk. The loan growth rate was mostly sluggish except for the mid-2000s and after 2012, while the loan interest rate has been steadily declining except for a brief period in the mid-2000s. Sluggish loan growth and declining loan interest rates suggest that loan developments were largely driven by demand factors and that it is important to control for loan demand factors in identifying supply factors.⁶

⁶ It is also important to control for supply factors other than those we focus below. In particular, during the period this study focuses on, Japanese banks struggled with resolving massive non-performing loans, especially in the early 2000s, which may have affected their loan supply. Regarding the effect of the bad loan problem on bank loan supply in Japan, see, for instance, Peek and Rosengren (2000) and Watanabe (2007).

3. Theoretical model

3.1. Portfolio selection without the VaR constraint

To derive theoretical predictions on the effect of long-term interest rates on bank lending, we construct a simple model of bank portfolio selection. Consider a bank that has net worth N . The bank originates loans L and invests in bonds B , and obtains funds from deposits D . Thus, its profit function and balance sheet constraint are defined as

$$\pi = r_L L + r_B B - r_D D \quad (1)$$

$$\text{s. t. } L + B = D + N \quad (2)$$

where π denotes the bank's profit and r_L , r_B , and r_D respectively represent the interest rate of loans, bonds, and deposits. We assume that the bank takes those interest rates as given and that r_L and r_B are stochastic variables. The mean and standard deviation of r_L and r_B are given by (μ_L, σ_L) and (μ_B, σ_B) , respectively. Combining equations (1) and (2) yields

$$\pi = (r_L - r_D)L + (r_B - r_D)B + r_D N \quad (3)$$

We assume that the bank is risk averse and maximizes its expected profit while minimizing the volatility of its profit. More specifically, the bank's optimization problem is given by

$$\text{Max } E[\pi] - \frac{\gamma}{2} \text{Var}[\pi] \quad (4)$$

where γ is the parameter for relative risk aversion, which is assumed to be strictly positive. We also assume that the correlation between r_L and r_B is zero. Then, by solving (4), the optimal portfolio (L^*, B^*) is given by the following equations:

$$L^* = \frac{1}{\gamma} \left(\frac{\mu_L - r_D}{\sigma_L^2} \right) \quad (5)$$

$$B^* = \frac{1}{\gamma} \left(\frac{\mu_B - r_D}{\sigma_B^2} \right) \quad (6)$$

That is, the optimal amounts of loan and bond holdings are increasing in their expected returns and decreasing in the volatilities of the expected return. Note that L^* does not depend on μ_B ; when the expected return of bonds falls, the bank only reduces its amounts of bonds (and hence deposits) and does not change the amount of loans.⁷

3.2. Portfolio selection with the VaR constraint

We now introduce the VaR constraint into the simple model described above. Under the VaR constraint, a bank will build its portfolio (loans and bonds) such that it would not be insolvent unless a considerable stress event materializes. More precisely, we assume that the VaR constraint is given by

$$(\mu_L - n\sigma_L - r_D)L + (\mu_B - n\sigma_B - r_D)B + r_D N \geq 0 \quad (7)$$

where the strictly positive parameter n represents the largest magnitude of the stress in terms of the volatility of bank assets (loans and bonds) under which the bank is solvent, and $(\mu_L - n\sigma_L - r_D)$ and $(\mu_B - n\sigma_B - r_D)$ respectively represent the loss (negative spread) if the stress event materializes.

Arranging inequality (7), we have

$$\frac{r_D - (\mu_L - n\sigma_L)}{r_D} L + \frac{r_D - (\mu_B - n\sigma_B)}{r_D} B \leq N \quad (7)'$$

Inequality (7)' shows that the bank should hold sufficient net worth (right-hand side) to absorb losses

⁷ This result does not hold if the correlation between r_L and r_B is not zero. If the correlation is positive (negative), a decrease in the expected return of bonds increases (decreases) banks' loans holding.

from loans and bonds under the stress event (left-hand side) when constructing its optimal portfolio (L^{**}, B^{**}) so as to satisfy the inequality. The bank solves the maximization problem (4) subject to inequality (7)'.

The comparative statics for the effect of a decrease in bond returns μ_B on the optimal amount of loans L^{**} are shown analytically in the Appendix. Here, we only provide the intuition behind the results. Inequality (7)' is analogous to a budget constraint in a standard consumption choice model, where the effects of a price change for one good can be decomposed into a substitution effect and an income effect. In our case, the substitution effect means that a decrease in μ_B makes it relatively costly for the bank to invest in bonds and the bank hence increases L^{**} . The income effect means that a decrease in μ_B decreases income from government bonds, which tightens the VaR constraint and hence reduces L^{**} . The bank thus reduces L^{**} in order to satisfy inequality (7)'. In sum, the effect of a decrease in μ_B on L^{**} depends on the relative impacts of the substitution effect and the income effect.

The effect of an increase in N on L^{**} is straightforward: a larger N makes inequality (7)' less binding and hence the bank increases L^{**} . Although our simple static model abstracts from how changes in bond interest rates affect banks' net worth, in practice, when bond interest rates fall (and hence the price of bonds increases), banks' net worth increases as a result of the increase in the value of their bond holdings. This increase in the value of banks' bond holdings can be interpreted as an increase in N . This net worth effect corresponds to the bank balance sheet channel in the literature

(e.g., Gertler and Karadi 2011, Holmstrom and Tirole 1997, Stein 1998).

4. Data, empirical strategy, and variables

4.1. Data and sample selection

To construct our firm-bank matched loan-level data, we use the database compiled by Teikoku Databank (TDB). The TDB database, which is the main source of our dataset, contains information on listed and unlisted firms in Japan, including their characteristics (e.g., ownership structure, credit scores, etc.), their financial statements, and up to 15 financial institutions that each firm transacts with. Regarding financial institutions that a firm transacts with, the TDB database contains information on their identities and whether the bank is the main bank of a firm. The definition of the main bank is somewhat subjective in that it is identified by each firm. In addition, and most importantly for our analysis, the TDB database allows us to identify the amount of loans outstanding provided by each bank that each firm transacts with. These firm-bank loan-level data are available for the period 2002–2014, although the number of observations for 2014 is much smaller than for the other years. Most variables in the TDB database are revised yearly, so that we use annual data for our panel.

We restrict our sample to firms for which data on (i) the total loans outstanding, (ii) the amount of loans outstanding from at least two banks, and (iii) the TDB credit score are available in the TDB database.⁸ For the reason explained below, we exclude from our sample firms that obtained

⁸ The TDB credit score rates firms based on their business history, capital structure, size, profitability, funding status, CEO, and vitality. The score takes a value between 1 and 100, with a higher score representing a better rating.

loans from only one bank. Based on these sample selection criteria, we have 48,975 firms in total.

In addition to the TDB database, we use Nikkei Financial Quest, banks' financial statements compiled by the Japanese Bankers Association, and banks' annual reports to obtain bank-level data. Macroeconomic variables are obtained from Nikkei Financial Quest. Regarding banks, we restrict our sample to deposit-taking financial institutions that mainly focus on commercial banking. To be more specific, our sample banks consist of city banks, regional banks, second-tier regional banks, and Shinkin banks.⁹ Regarding mergers and acquisitions (M&A), we treat merged banks as distinct institutions from the entities that were merged. Based on this procedure, we end up with observations on 408 banks in total.

Using the firm and bank data described above, we construct an unbalanced firm-bank matched loan-level panel that covers the period 2002–2014. The total number of individual firm-bank loan observations for the entire period is 379,989.

4.2. Empirical strategy

The advantage of firm-bank matched loan-level panel data is that such data make it possible to disentangle credit supply shocks from credit demand shocks and identify the bank balance sheet channel. For this reason, such data have been widely used in studies examining the bank balance sheet channel in the context of monetary policy (Hosono and Miyakawa 2014, Ioannidou et al. 2015,

⁹ We exclude long-term credit banks and trust banks, which are somewhat different from commercial banks. For a detailed description of the type of banks in Japan, see Uchida and Udell (2010).

Jiménez et al. 2012; 2014), financial crises (Khwaja and Mian 2008, Schnabl 2012), and public capital injections to banks during a crisis (Duchin and Sosyura 2014, Giannetti and Simonov 2013). In the context of our study, the aim is to investigate the impact of changes in long-term interest rates on bank loan supply employing the model presented in Section 3. Specifically, in our analysis we focus on exogenous changes in banks' net worth brought about by changes in the prices of bonds that banks are holding.

Suppose that changes in loans to firm i by bank j ($LOANS(i,j)$) are determined by macroeconomic shocks such as changes in long-term interest rates ($\Delta BOND RATE$), bank-specific loan supply shocks such as capital gains/losses due to changes in the value of bond holdings reflecting changes in interest rates ($BK_CAPGAIN(j)$), and firm-specific loan demand shocks ($F_DEMAND(i)$) such as an increase in sales growth. That is:

$$\Delta LOANS(i,j) = \alpha_0 + \alpha_1 \Delta BOND RATE + \alpha_2 BK_CAPGAIN(j) + \alpha_3 F_DEMAND(i) + \varepsilon(i,j)$$

If $F_DEMAND(i)$ is unobservable, OLS regression yields biased estimates of α . However, if we observe a change in loans to the same firm by another bank, j' , we can write a similar equation:

$$\Delta LOANS(i,j') = \alpha_0 + \alpha_1 \Delta BOND RATE + \alpha_2 BK_CAPGAIN(j') + \alpha_3 F_DEMAND(i) + \varepsilon(i,j')$$

Differencing the above two equations yields

$$\begin{aligned} & \Delta LOANS(i,j) - \Delta LOANS(i,j') \\ & = \alpha_2 (BK_CAPGAIN(j) - BK_CAPGAIN(j')) + \varepsilon(i,j) - \varepsilon(i,j') \end{aligned}$$

Thus, firm-specific demand shocks are eliminated when we difference the changes in loan amounts to the same firm provided by different banks and we obtain an unbiased estimate of α_2 which captures

the effect of bank-specific loan supply shocks. Note that for us to be able to estimate the above equation, a firm needs to have lending relationships with at least two banks. This is the reason that we exclude from our sample firms that obtained loans from only one bank.

Specifically, we estimate the following three types of regression equations:

$$\begin{aligned} \Delta LOANS(i, j, t) = & \beta_0 + \beta_1 \Delta BOND RATE(t - 1) + \beta_2 BK_CAPGAIN(j, t - 1) \\ & + \beta_3 \mathbf{MACRO}(\mathbf{t} - \mathbf{1}) + \beta_4 \mathbf{BANK}(\mathbf{j}, \mathbf{t} - \mathbf{1}) + \beta_5 \mathbf{FIRM}(\mathbf{i}, \mathbf{t} - \mathbf{1}) \\ & + \eta(j) + v(i) + \varepsilon(i, j, t) \end{aligned} \quad (8)$$

$$\begin{aligned} \Delta LOANS(i, j, t) = & \gamma_0 + \gamma_1 BK_CAPGAIN(j, t - 1) \\ & + \gamma_2 \mathbf{BANK}(\mathbf{j}, \mathbf{t} - \mathbf{1}) + \gamma_3 \mathbf{FIRM}(\mathbf{i}, \mathbf{t} - \mathbf{1}) + \eta(j) + v(i) + \zeta(t) \\ & + \varepsilon(i, j, t) \end{aligned} \quad (9)$$

$$\begin{aligned} \Delta LOANS(i, j, t) = & \delta_0 + \delta_1 BK_CAPGAIN(j, t - 1) + \delta_2 \mathbf{BANK}(\mathbf{j}, \mathbf{t} - \mathbf{1}) + \eta(j) \\ & + \omega(i, t) + \varepsilon(i, j, t) \end{aligned} \quad (10)$$

In equation (8), we control for the bank-level fixed effect $\eta(j)$ and the firm-level fixed effect $v(i)$ to capture bank- and firm-specific time-invariant factors. In addition, we control for time-variant covariates, namely macroeconomic conditions ($\mathbf{MACRO}(\mathbf{t} - \mathbf{1})$), bank characteristics ($\mathbf{BANK}(\mathbf{j}, \mathbf{t} - \mathbf{1})$), and firm characteristics ($\mathbf{FIRM}(\mathbf{i}, \mathbf{t} - \mathbf{1})$). We employ a one-year lag for all independent variables to avoid possible endogeneity problems. Next, in equation (9), we additionally include the year fixed effect $\zeta(t)$. While this specification takes time-variant unobservable macroeconomic factors into account, including year fixed effects means that we cannot estimate the impact of changes in long-term interest rates, $\Delta BOND RATE$, and other macroeconomic variables. Finally, equation (10) incorporates the firm-year fixed effect $\omega(i, t)$, which captures time-variant firm-level unobservable factors such as firm-specific loan demand that may not be fully captured by variables included in $\mathbf{FIRM}(\mathbf{i}, \mathbf{t} - \mathbf{1})$ in equations (8) and (9). In terms of the interpretation of our results, the coefficient

on $\Delta BOND RATE$ in equation (8) indicates whether higher long-term interest rates increase bank loan supply (through the income effect) or decrease it (through the substitution effect). Meanwhile, the impact of capital gains/losses on bank bond holdings on loan supply, $BK_CAPGAIN$, is included in all three specifications, but our preferred specification is equation (10), where the firm-year fixed effect, $\omega(i, t)$, takes unobservable time-variant firm heterogeneity into account.

The empirical investigation on the bank balance sheet channel used here follows the identification strategy employed by Hosono and Miyakawa (2014) and Jiménez et al. (2012), who also used firm-bank loan-level panel data. However, our approach differs from theirs in that we use a different proxy for bank net worth shocks, namely capital gains accruing to banks through their interest rate risk exposure ($BK_CAPGAIN(j)$), while the other two studies use the interaction term between the variable which represents the monetary policy stance (e.g., short-term interest rates) and banks' net worth level prior to changes in monetary policy. While the interaction term used in these studies may indirectly measure the magnitude of the bank net worth effect brought about by monetary policy shocks, we think capital gains accruing to banks through their interest rate exposures provide a much more direct measurement. Our approach is similar to that in studies examining the effect of public capital injections on bank loan supply, in that, just like those studies, we also directly examine the impact of additional net worth accruing to banks.

4.3. Variables

Definitions of the dependent and independent variables used in the estimation are presented in Table 1, while Table 2 provides their summary statistics. The dependent variable is $\Delta LOANS$, which represents the percentage change in loans to firm i by bank j in year t from year $t - 1$ and is obtained by taking the log-difference between year t and $t - 1$. We define loans as the sum of short-term loans, long-term loans, and bills discounted in the TDB dataset. The mean of $\Delta LOANS$ is -5.2 percent, while the median is -3.5 percent (Table 2).

The main independent variables are the change in the expected rate of return on long-term bonds, $\Delta BOND RATE$, and bank-specific capital gains/losses as a result of changes in interest rates on bonds that banks have been holding, $BK_CAPGAIN$. As a proxy for $\Delta BOND RATE$, we use the difference between 10-year forward interest rates, calculated in the following manner. We consider two forward rates: the forward rate observed in year $t - 1$ for 10-year bonds starting in year t , and the forward rate observed in year $t - 2$ for the same 10-year bonds starting in year t . We then take the difference between the two. If we denote the forward rate as $f_s(x, x + 10)$, where subscript s is the year in which the forward contract is concluded and x is the year in which the forward contract is executed, $\Delta BOND RATE$ is defined as:

$$\Delta BOND RATE = f_{t-1}(t, t + 10) - f_{t-2}(t, t + 10)$$

Thus, $\Delta BOND RATE$ captures the change between year $t - 2$ and year $t - 1$ in the expected return

of the same 10-year bonds.¹⁰ Note that we use not the change in spot rates but the change in forward rates. Using forward rates enable us to correctly identify unanticipated changes in the expected returns on bonds, while spot rates may well be contaminated by contemporaneous macroeconomic conditions that affect banks' lending behavior simultaneously. If they are indeed contaminated, the use of spot rates might result in a biased estimates of the portfolio balance channel. Table 2 shows that the mean of $\Delta BOND RATE$ is -0.35 percentage points, while the median is -0.45 percentage points. Based on the model in Section 3, we expect that the coefficient on $\Delta BOND RATE$ is negative if the substitution effect is larger than the income effect.

We calculate the bank-specific capital gains/losses stemming from banks' exposure to interest rate risk via the holding of bonds with various maturities as follows:

$$BK_CAPGAIN = \frac{-\sum_s (\Delta BOND RATE_SPOT_t(s) \times BK_BOND_{t-1}(s) \times s)}{BK_TA_{t-1}}$$

where $\Delta BOND RATE_SPOT_t(s)$ is the change in the spot interest rate in year t and s represents the maturity of various spot rates,¹¹ $BK_BOND_{t-1}(s)$ represents a bank's holdings of bonds with maturity s in year $t - 1$, and BK_TA_{t-1} is a bank's total assets in year $t - 1$, which are used to express changes in the value of bond holdings relative to the bank's assets.¹² Table 2 shows that the

¹⁰ To be precise, we use 10-year *implied* forward rates, which are calculated from spot rates of various maturities observed in different years, based on the assumption that term structure is explained by expectation theory.

¹¹ Banks disclose their bond holdings for each maturity based on the following categories: less than 1 year, 1–5 years, 5–10 years, and 10 years or more. Thus, to calculate $BK_CAPGAIN$, we use the median value of each category for the spot rate and maturity; that is, we use $s = 0.5, 3, 7.5,$ and 12 years respectively.

¹² One may argue that bank-specific capital gains/losses also arise through banks' holding of stocks if, for example, there is a negative correlation between bond prices and stock prices as predicted by the discounted cash flow model, so that lower long-term interest rates boost stock prices. Lower long-term interest rates may also increase bank net worth through the changes in the fair value of loans and deposits, which are usually recorded on a book-value basis, if the effective maturity (i.e., the time interval for

mean of $BK_CAPGAIN$ is 0.04 percent, while the median is 0.08 percent. Based on the model in Section 3, the coefficient on $BK_CAPGAIN$ should take a positive value if the net worth effect is present.

Figure 3 shows developments in the key variables of interest during the period 2002–2014. As can be seen in Figure 3(a), the median of $\Delta LOANS$ was negative and fairly stable during this period, although loans contracted at a faster rate during the period 2002–2004 when Japanese banks were reducing massive non-performing loans and again in 2009 and 2010 in the midst of the Great Recession. Unanticipated changes in the forward rate, $\Delta BONDRATE$, were mostly negative, except in 2005 and 2006 (Figure 3(b)). Finally, the median of banks' capital gains on the bonds that it holds, $BK_CAPGAIN$, was positive in 2002–2003 and 2008–2013 (Figure 3(c)).

We also use the following time-variant covariates that may affect $\Delta LOANS$. Regarding macroeconomic variables, the most important variable for our analysis is the expected rate of return of loans. We use the annual change in the average contract interest rate on new loans and bills discounted published by the Bank of Japan ($\Delta LOANRATE$). Based on the prediction of our model in Section 3, we expect the coefficient on $\Delta LOANRATE$ to be positive. In addition to $\Delta LOANRATE$, we use the nominal GDP growth rate (ΔGDP) and the annual percentage change of the Tokyo Stock Price Index ($\Delta TOPIX$).

As for variables representing bank characteristics, we use the bank capital-asset ratio, which

changes in interest rates) of loans is longer than that of deposits. However, we do not have reliable data on the correlation of the prices of bonds and stocks held by each bank. Nor do we have data on the effective maturity of bank loans and deposits. Thus we abstract from these changes when calculating $BK_CAPGAIN$.

is the bank net worth over total assets (BK_CAP). We employ BK_CAP as a proxy for banks' lending capacity. As mentioned above, the financial strength of Japanese banks was weak in the early 2000s due to the non-performing loan problem, which may have weakened loan supply. Further, to take into account that the effect of bank net worth on bank loan supply may be non-linear we also include the square of this term (BK_CAP_SQ). In addition, we use the bank liquidity ratio (BK_LIQ), the bank return on assets (BK_ROA), bank size as measured by the logarithm of total assets (BK_lnTA), and a dummy variable that is equal to one if a bank is the main bank of a borrowing firm and zero otherwise (BK_MAIN).

Regarding firm characteristics, we use the firm capital-asset ratio (F_CAP), the liquidity ratio (F_LIQ), the return on assets (F_ROA), sales growth ($F_ΔSALES$), firm size as measured by the logarithm of total assets (F_lnTA), firm age (in logarithm, F_lnAGE), and the logarithm of the number of banks that a firm transacts with ($F_lnNBANKS$).

To deal with possible outliers in the TDB dataset, we winsorize the following firm-level variables at the upper and lower 0.5 percentiles: $ΔLOANS$, F_CAP , F_LIQ , F_ROA , and $F_ΔSALES$.

5. Results

5.1. Main results

Table 3 presents the main results of our empirical analysis. Columns (i), (ii) and (iii) respectively

correspond to empirical specifications (8), (9), and (10) in Section 4.2, with the rows reporting the estimated coefficients and heteroskedasticity-robust standard errors clustered at the bank level.

Starting with the results in column (i), we find that the coefficient on $\Delta BOND RATE$, representing unexpected changes in the long-term forward rate, is negative and significant. The estimated coefficient implies that a 100-basis point decrease in the long-term forward rate increases firms' loan growth rate by 1.6 percentage points. This result suggests that the substitution effect is larger than the income effect. Further, consistent with the theoretical model, the coefficient on $\Delta LOAN RATE$ is significantly positive. Turning to the coefficient on $BK_CAPGAIN$, which measures the net worth effect, this is positive and significant. The estimated coefficient implies that a one standard deviation increase in $BK_CAPGAIN$, which corresponds to an increase in the ratio of bank capital to total assets by 0.18 percentage points, increases bank loan supply by 0.8 percentage points. Compared to the mean of $\Delta LOANS$, which is -5.2% , the net worth effect is of modest but not negligible economic significance.

Next, looking at the other covariates, the results are mostly consistent with our expectations. Of the remaining macroeconomic control variables, $\Delta TOPIX$ takes a significant positive coefficient, implying that the loan growth rate is higher when the stock market is doing well. As for bank characteristics, the coefficient on B_CAP is significantly positive while that on B_CAP_SQ is significantly negative, indicating that the effect of bank net worth on loan supply is non-linear in that the positive marginal effect diminishes as the bank capital-asset ratio increases. Next, the coefficient

on *BK_MAIN* is positive and significant, which suggests that a closer firm-bank relationship has a positive effect on the loan growth rate. Finally, all of the firm characteristics variables we employ have significant coefficients, indicating that the growth rate of loans from an individual bank is higher the higher a firm's capital ratio, liquidity ratio, ROA, and sales growth, the smaller and younger a firm, and the smaller the number of banks it transacts with.

Next, columns (ii) and (iii) respectively show the estimation results with year fixed effects and firm-year fixed effects. Note that the macroeconomic variables are dropped in column (ii), while the firm characteristics variables as well as the macroeconomic variables are dropped in column (iii). Thus, we cannot estimate the effect of $\Delta BOND RATE$ in these specifications. On the other hand, controlling for unobservable time-variant macroeconomic conditions and unobservable firm-level characteristics including firms' loan demand allows us to more precisely estimate the effect of *BK_CAPGAIN* on loan supply. We find that the coefficient on *BK_CAPGAIN* is 3.57 in column (ii) and 4.65 in column (iii) compared to 4.60 in column (i). Thus, the coefficients are of a similar magnitude as that in column (i). However, because of larger standard errors *BK_CAPGAIN* is significant only at the 10 percent level in columns (ii) and (iii), which is lower than in column (i). The larger standard errors in columns (ii) and (iii) suggest that there may exist significant heterogeneity in firm and bank characteristics that affects the magnitude of the effect of changes in bank net worth on loan supply. The role of heterogeneity in firm and bank characteristics is discussed in the following subsection.

5.2. *The net worth effect and firm and bank characteristics*

In this subsection, we investigate whether the bank net worth effect differs depending on firm and bank characteristics. We rerun the estimation incorporating firm-year fixed effects and bank fixed effects (column (iii) in Table 3) and interact $BK_CAPGAIN$ with the following bank and firm characteristics variables.

Regarding bank characteristics, the model in Section 3 suggests that the net worth effect may be absent for banks with large net worth for which the VaR constraint is not binding. If this is the case, we expect the net worth effect to be weaker for banks with a higher capital-asset ratio and stronger for banks with a lower capital-asset ratio. To explore this possibility, we construct a dummy variable that equals one if a bank's capital-asset ratio is lower than the sample median, $dum_BK_CAP_SMALL$, and interact this dummy with $BK_CAPGAIN$. We expect the coefficient on $BK_CAPGAIN \times dum_BK_CAP_SMALL$ to be larger than that on $BK_CAPGAIN \times (1 - dum_BK_CAP_SMALL)$ for banks with a higher capital-asset ratio.

Another bank variable that we are interested in is bank size. In our model, we consider only two types of bank assets, domestic loans to firms and government bonds. However, in practice banks may hold other types of assets such as loans to foreign firms or Japanese firms' subsidiaries abroad, loans to households, and securities other than government bonds. If a bank's net worth rises as a result of capital gains on bond holdings, the bank may increase its holdings of such other assets rather than

increasing loans to firms. While our dataset is not rich enough to investigate this possibility further, we can check whether the net worth effect is stronger for smaller banks which, due to their size and limited expertise, are less likely to lend internationally or invest in other securities and whose assets as a result mainly consist of domestic loans to firms and government bonds. We construct a dummy variable that equals one if a bank's total assets are smaller than the median, $dum_BK_lnTA_SMALL$, and interact this dummy with $BK_CAPGAIN$. We expect the coefficient on $BK_CAPGAIN \times dum_BK_lnTA_SMALL$ for smaller banks to be larger than that on $BK_CAPGAIN \times (1 - dum_BK_lnTA_SMALL)$ for larger banks.

Regarding firm characteristics, the model in Section 3 implies that a positive bank net worth shock affects banks' risk taking capacity.¹³ In response to a positive net worth shock banks may therefore be more aggressive in extending loans to riskier and financially constrained firms whose loan demand has not been satisfied. To examine this, we use firms' size, capital-asset ratio, and TDB credit score as proxies for firms' degree of riskiness and financial constraints. We assume that smaller firms, more leveraged firms with a lower capital-asset ratio, and firms with a lower TDB credit score are riskier and more financially constrained. We construct a dummy variable that equals one if a firm's total assets are smaller than the median, $dum_F_lnTA_SMALL$, and expect that the coefficient on $BK_CAPGAIN \times dum_F_lnTA_SMALL$ is larger than that on $BK_CAPGAIN \times (1 - dum_F_lnTA_SMALL)$ for larger firms. In a similar vein, we construct

¹³ Also see Aoki and Sudo (2012), who argue that a deterioration in banks' net worth reduces their risk taking capacity and results in a rebalancing of banks' portfolios towards government bonds. Meanwhile, Duchin and Sosyura (2014) report that U.S. banks that received government assistance from the Troubled Asset Relief Program shifted their asset allocation to riskier assets.

dummy variables $dum_F_CAP_SMALL$ and $dum_F_SCORE_LOW$ that equal one if the capital-asset ratio and TDB score of a firm is smaller than their sample median.

Table 4 displays the estimation results. Regarding the interaction of $BK_CAPGAIN$ and bank net worth, $BK_CAPGAIN \times dum_BK_CAP_SMALL$, we find that the coefficient for banks with a lower capital-asset ratio is slightly larger than that for banks with a higher ratio, but neither is statistically significant (column (i)).¹⁴ As for the interaction with bank size, $BK_CAPGAIN \times dum_BK_lnTA_SMALL$, the coefficient for smaller banks is larger than that for larger banks, which is consistent with our expectation, but neither coefficient is statistically significant (column (ii)). Overall, our results provide no clear evidence that the size of the effect of bank net worth on loan supply depends on bank characteristics.

Turning to the interaction of bank net worth and firm characteristics, we find significant positive coefficients for firms that are smaller, have a lower capital-asset ratio, and have a lower TDB score (columns (iii), (iv), and (v)). These results suggest that the bank net worth effect is stronger for loans to riskier and more financially constrained firms. The question that naturally arises is whether this link between bank net worth and firm characteristics is affected by bank characteristics. In order to examine this, we interact $BK_CAPGAIN \times dum_F_lnTA_SMALL$ with bank characteristics variables to construct triple interaction terms.¹⁵ The results provide evidence of a positive bank net

¹⁴ Brei et al. (2013: Figure 5) report that the effect of a stronger capital position on bank loans depends on the initial capital-asset ratio in an intricate way. They argue that stronger capitalization increases loan growth in normal times, but during a crisis the impact of stronger capitalization depends on whether the additional capital exceeds a critical threshold.

¹⁵ When we construct triple interaction terms with $BK_CAPGAIN \times dum_F_CAP_SMALL$ or $BK_CAPGAIN \times dum_F_SCORE_SMALL$, we obtain qualitatively the same results as in the text, although

worth effect on bank loan supply when both the firm and the bank are small (column (vi)). Regarding the interaction with the bank capital-asset ratio, the coefficients are positive and significant only for small firms, and the coefficient is larger (19.94) for banks with a lower capital-asset ratio than for banks with a higher ratio (14.90), suggesting that the bank net worth effect is larger for capital-constrained banks.

6. Conclusion

Employing a unique and massive firm-bank loan-level panel dataset covering a variety of banks and firms in Japan during the period 2002–2014, this study investigated the effects of long-term interest rates on bank loan supply to firms. To disentangle the effects of interest rates on bank loan supply from those on bank loan demand, we incorporated firm-year fixed effects to control for time-varying unobservable loan demand. Our empirical analysis yielded the following results. First, a decrease in long-term interest rates led to an increase in banks' loan supply, providing evidence for the existence of the portfolio balance channel, which consists of the net outcome of the substitution effect (the shift from government bonds to loans under the VaR constraint) and the income effect (slower loan growth due to the decrease in income from government bonds that tightens the VaR constraint). Second, we find that an increase in banks' net worth as a result of an increase in the value of bond holdings brought about by a decline in long-term interest rates led to an increase in loans to firms, providing evidence for the bank balance sheet channel. We also find that the bank balance sheet channel is

the statistical significance becomes weaker (results not reported).

stronger in the case of loans to smaller, more leveraged, and less creditworthy firms, which suggests that a stronger balance sheet leads banks to increase their loan supply to credit-constrained and riskier firms.

The analysis in this study raises a number of issues that remain to be addressed in future research. First, while we provide evidence for the existence of the portfolio balance sheet channel and the bank balance sheet channel (supply factors), how important they are in quantitative terms relative to demand factors (such as an increase in loan demand due to lower long-term interest rate) remains an open question. Our estimation results suggest that the economic impact of these channels is modest, but in order to gain a better quantitative understanding of the transmission of monetary policy it is necessary to decompose the sluggish loan growth during the lost decades in Japan into demand and supply factors in a more rigorous manner. Second, while we find that changes in long-term interest rates affect banks' loan supply, such changes in loan supply may not materially affect client firms' real activities such as investment and employment if firms are not credit constrained due to the availability of other sources of funds. In order to assess the true significance of the two transmission channels, one has to know the elasticity with which borrower firms can switch between borrowing from banks and other sources of funds, which may be heterogeneous depending on firms' and banks' characteristics as well as the closeness of firm-bank relationships. Third, while we find evidence that a reduction in long-term interest rates led banks to particularly increase loan supply to credit-constrained and riskier firms, whether banks' portfolio composition shifted toward riskier assets remains an open question. It

may well be the case that the magnitude of the changes in banks' portfolio composition differs across banks, so that one has to find a way to control for the aggregate loan demand that each bank faces in examining the shift in bank portfolios. How firms respond to loan supply shocks to their lender banks, how important bank loan supply shocks are for the economy, and how banks' asset portfolios shift in response to changes in long-term interest rates are issues we leave for future research.

Appendix. Bank portfolio selection model

To derive theoretical predictions on the effect of long-term interest rates on bank lending, we construct, as mentioned in the text, a simple bank portfolio selection model. In this Appendix, we provide a detailed analysis of banks' portfolio selection with the VaR constraint, from which we abstracted in the text.

As in Section 3.2, the VaR constraint is given by the following inequality:

$$-(l_L L + l_B B) \leq N \quad (\text{A.1})$$

where $l_L = \frac{\mu_L - r_D - n\sigma_L}{r_D}$ and $l_B = \frac{\mu_B - r_D - n\sigma_B}{r_D}$, which represent the unexpected losses on loans and bonds at the time of stress. We assume that l_L and l_B are negative.

From the Kuhn-Tucker conditions, we have

$$L^{**} = L^* + \lambda L' \quad (\text{A.2})$$

$$B^{**} = B^* + \lambda B' \quad (\text{A.3})$$

where L^* and B^* are the optimal amount of loans and bonds without the VaR constraint, given by equations (5) and (6) in Section 3.1. λ represents the shadow price of a bank's capital N , and L' and B' are given by

$$L' = \frac{l_L}{\gamma\sigma_L^2} < 0 \quad (\text{A.4})$$

$$B' = \frac{l_B}{\gamma\sigma_B^2} < 0 \quad (\text{A.5})$$

Substituting (A.2) and (A.3) into (A.1) yields

$$\lambda = -\frac{l_L L^* + l_B B^* + N}{l_L L' + l_B B'} > 0 \quad (\text{A.6})$$

Thus, from equations (A.2) and (A.3), it can be easily seen that the optimal amount of loans and bonds under the VaR constraint, L^{**} and B^{**} , is smaller than the optimal amount of loans and bonds without the VaR constraint, L^* and B^* .

Let us now consider the comparative statics of the effects of a change in μ_B on L^{**} . From equation (A.2), we have

$$\frac{\partial L^{**}}{\partial \mu_B} = L' \frac{\partial \lambda}{\partial \mu_B} = \theta_1 \frac{\partial l_B}{\partial \mu_B} + \theta_2 \frac{\partial B^*}{\partial \mu_B} \quad (\text{A.7})$$

$$\theta_1 = -\frac{B^{**}L'}{l_L L' + l_B B'} > 0 \quad (\text{A.8})$$

$$\theta_2 = \frac{-(1 + \lambda/r_D)l_B L'}{l_L L' + l_B B'} < 0 \quad (\text{A.9})$$

Because $\frac{\partial l_B}{\partial \mu_B} > 0$ and $\frac{\partial B^*}{\partial \mu_B} > 0$, the first term in equation (A.7) is positive, while the second term is negative. The first term shows that an increase in μ_B reduces the unexpected loss on bonds and relaxes the VaR constraint. It therefore has a positive impact on L^{**} . The second term shows that an increase in μ_B raises the amount of bond holdings, which in turn tightens the VaR constraint. Thus, it has a negative impact on L^{**} . The overall effect of μ_B on L^{**} depends on the relative magnitude of these two opposing effects.

Next, we consider the comparative statics of the effects of a change in N on L^{**} .

$$\frac{\partial L^{**}}{\partial N} = L' \frac{\partial \lambda}{\partial N} = -\frac{L'}{l_L L' + l_B B'} > 0 \quad (\text{A.10})$$

Because an increase in N always relaxes the VaR constraint, it has a positive impact on L^{**} .

References

- Adrian, Tobias, and Hyun Song Shin (2011). “Financial intermediaries and monetary economics.” In *Handbook of Monetary Economics*, Volume 3A, Benjamin M. Friedman and Michael Woodford, eds., Amsterdam: Elsevier, Ch. 12, 601–650.
- Aoki, Kosuke, and Nao Sudo (2012). “Asset portfolio choice of banks and inflation dynamics.” Bank of Japan Working Paper 12-E-5, July.
- Bernanke, Ben S., and Alan S. Blinder (1992). “The federal funds rate and the channels of monetary transmission.” *American Economic Review* 82(4), 901–921.
- Bernanke, Ben S., and Mark Gertler (1989). “Agency costs, net worth, and business fluctuations.” *American Economic Review* 79(1), 14–31.
- Brei, Michael, Leonardo Gambacorta, and Goetz von Peter (2013). “Rescue packages and bank lending.” *Journal of Banking and Finance* 37(2), 490–505.
- Carpenter, Seth, Selva Demiralp, Jane Ihrig, and Elizabeth Klee (2015). “Analyzing Federal Reserve asset purchases: From whom does the Fed buy?” *Journal of Banking and Finance* 52, 230–244.
- Duchin, Ran, and Denis Sosyura. (2014) “Safer ratios, riskier portfolios: Banks’ response to government aid.” *Journal of Financial Economics* 113(1), 1–28.
- Eggertsson, Gauti B., and Michael Woodford (2003). “The zero bound on interest rates and optimal monetary policy.” *Brookings Papers on Economic Activity* No. 1.
- Fukunaga, Ichiro, Naoya Kato, and Junko Koeda (2015). “Maturity structure and supply factors in Japanese government bond markets.” *Monetary and Economic Studies* 33, Bank of Japan, 45–95.
- Gagnon, Joseph, Matthew Raskin, Julie Remache, and Brian Sack (2011). “The financial market effects of the Federal Reserve’s Large-Scale Asset Purchases.” *International Journal of Central Banking* 7(1), 3–43.
- Gertler, Mark, and Peter Karadi (2011). “A model of unconventional monetary policy.” *Journal of Monetary Economics* 58(1), 17–34.
- Giannetti, Mariassunta, and Andrei Simonov (2013). “On the real effects of bank bailouts: Micro evidence from Japan.” *American Economic Journal: Macroeconomics* 5(1), 135–167.
- Holmstrom, Bengt, and Jean Tirole (1997). “Financial intermediation, loanable funds, and the real sector.” *Quarterly Journal of Economics* 112(3), 663–691.

- Hosono, Kaoru (2006). “The transmission mechanism of monetary policy in Japan: Evidence from banks’ balance sheets.” *Journal of the Japanese and International Economies* 20(3), 380–405.
- Hosono, Kaoru, and Shogo Isobe (2014). “The financial market impact of unconventional monetary policies in the U.S., the U.K., the Eurozone, and Japan.” PRI Discussion Paper No. 14A-05.
- Hosono, Kaoru, and Daisuke Miyakawa (2014). “Business cycles, monetary policy, and bank lending: Identifying the bank balance sheet channel with firm-bank match-level loan data.” RIETI Discussion Paper 14-E-026.
- Hosono, Kaoru, and Daisuke Miyakawa (2015). “Bank lending and firm activities: Overcoming the identification problems.” In *The Economics of Interfirm Networks*, Tsutomu Watanabe, Iichiro Uesugi, and Arito Ono, eds., Tokyo: Springer, Ch. 12, 237–260.
- Ioannidou, Vasso, Steven Ongena, and José-Luis Peydró (2015). “Monetary policy, risk-taking, and pricing: Evidence from a quasi-natural experiment.” *Review of Finance* 19(1), 95–144.
- Jiménez, Gabriel, Steven Ongena, José-Luis Peydró, and Jesús Saurina (2012). “Credit supply and monetary policy: Identifying the bank balance-sheet channel with loan applications.” *American Economic Review* 102(5), 2301–2326.
- Jiménez, Gabriel, Steven Ongena, José-Luis Peydró, and Jesús Saurina (2014). “Hazardous times for monetary policy: What do twenty-three million bank loans say about the effects of monetary policy on credit risk-taking?” *Econometrica* 82(2), 463–505.
- Joyce, Michael A.S., Zhuoshi Liu, and Ian Tonks (2014). “Institutional investor portfolio allocation, quantitative easing and the global financial crisis.” Bank of England Working Paper No. 510, September.
- Kashyap, Anil K, and Jeremy C. Stein (2000). “What do a million observations on banks say about the transmission of monetary policy?” *American Economic Review* 90(3), 407–428.
- Kashyap, Anil K, Jeremy C. Stein, and David W. Wilcox (1993). “Monetary policy and credit conditions: Evidence from the composition of external finance.” *American Economic Review* 83(1), 78–98.
- Khwaja, Asim Ijaz, and Atif Mian (2008). “Tracing the impact of bank liquidity shocks: Evidence from an emerging market.” *American Economic Review* 98(4), 1413–1442.
- Kiyotaki, Nobuhiro, and John Moore (1997). “Credit cycles.” *Journal of Political Economy* 105(2), 211–248.
- Krishnamurthy, Arvind, and Annette Vissing-Jorgensen (2011). “The effects of quantitative easing on

interest rates: Channels and implications for policy.” *Brookings Papers on Economic Activity* Fall 2011, 215–265.

Krishnamurthy, Arvind, and Annette Vissing-Jorgensen (2013). “The ins and outs of LSAPs.” Paper presented at the Federal Reserve Bank of Kansas City Economic Symposium “Global Dimensions of Unconventional Monetary Policy,” August 22–24.

Peek, Joe, and Eric S. Rosengren (2000). “Collateral damage: Effects of the Japanese bank crisis on real activity in the United States.” *American Economic Review* 90(1), 30–45.

Schnabl, Philipp (2012). “The international transmission of bank liquidity shocks: Evidence from an emerging market.” *Journal of Finance* 67(3), 897–932.

Stein, Jeremy C. (1998). “An adverse-selection model of bank asset and liability management with implications for the transmission of monetary policy.” *RAND Journal of Economics* 29(3), 466–486.

Uchida, Hirofumi and Gregory Udell (2010). “Banking in Japan.” In Allen N. Berger, Philip Molyneux, and John O.S. Wilson, eds., *The Oxford Handbook of Banking*, New York: Oxford University Press, Ch. 35, 903–940.

Watanabe, Wako (2007). “Prudential regulation and the ‘credit crunch’: Evidence from Japan.” *Journal of Money, Credit, and Banking* 39(2–3), 639–665.

Figure 1: Monetary policy measures and long-term interest rates in Japan

This figure presents development in monetary policy measures and long-term interest rates. Monetary policy measures are the uncollateralized overnight call rate and the amount of Japanese government bonds (JGBs) held by the Bank of Japan. Long-term interest rates are represented by the 10-year yield on newly issued JGBs.

Sources: Bank of Japan, Japan Bond Trading Co., Ltd.

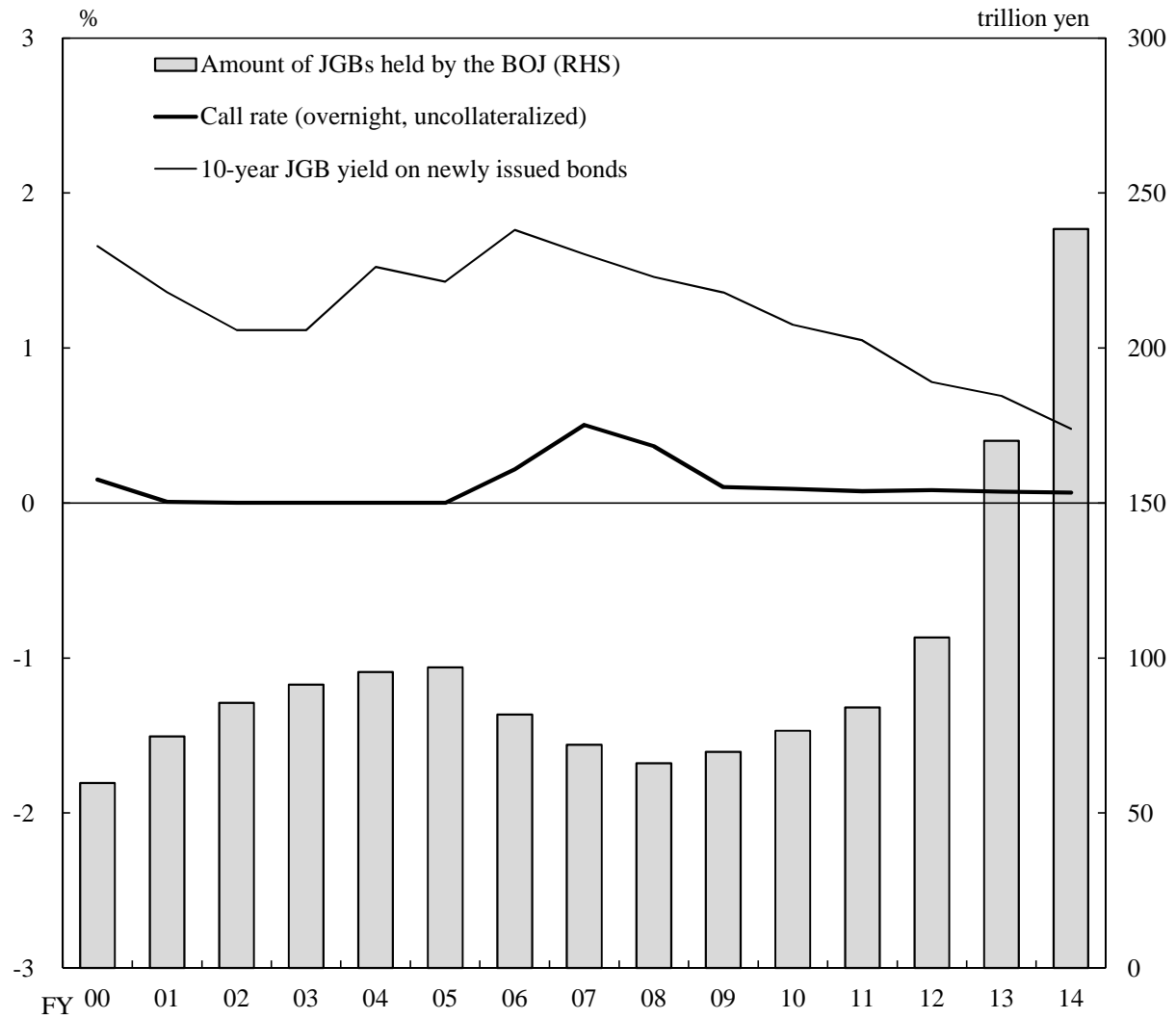
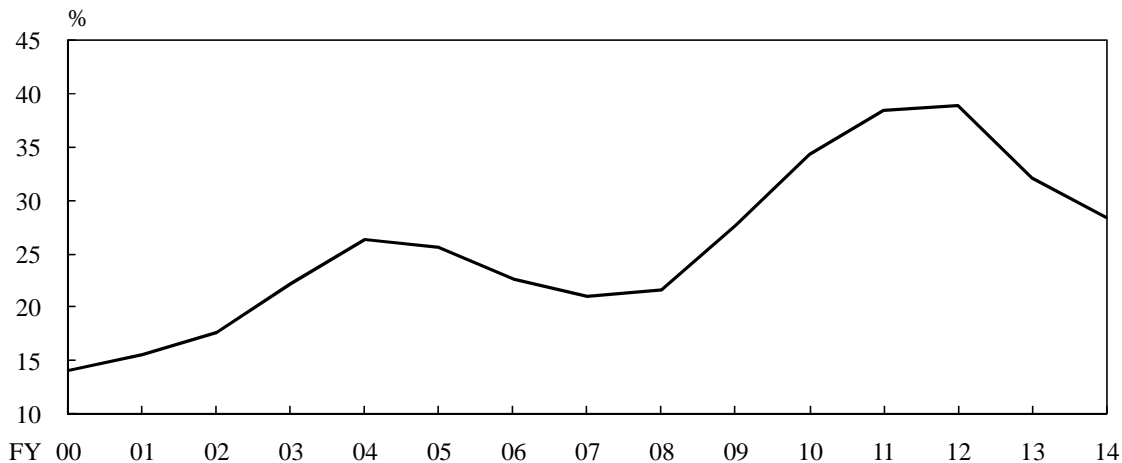


Figure 2: Japanese banks' asset portfolios and asset returns

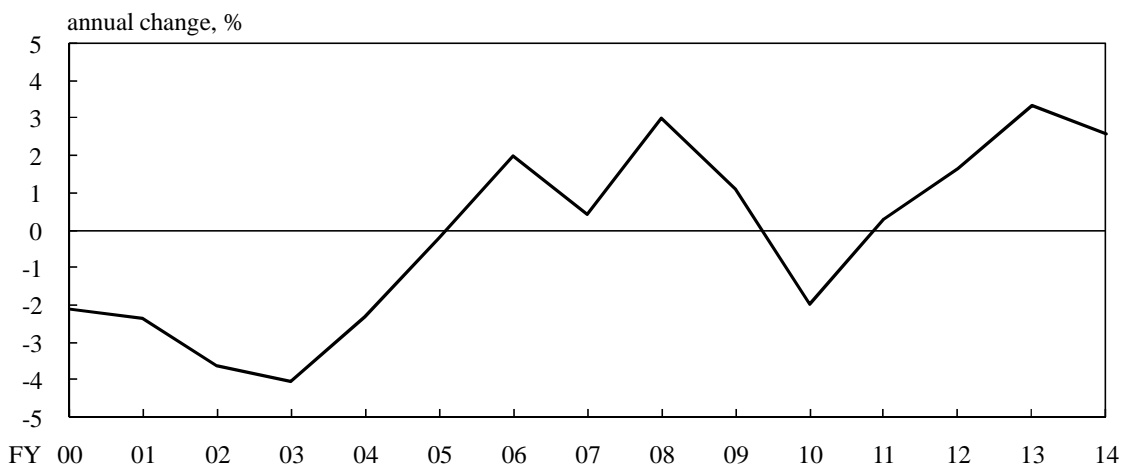
These figures present developments in Japanese banks' asset portfolios (bonds and loans) and asset returns using aggregate data. Panel (a) shows the ratio of Japanese government bond (JGB) holdings to total loans outstanding, (b) shows the annual rate of change in loans outstanding to corporations, and (c) shows the average interest rate on newly contracted loans including bills discounted. The return on JGBs is presented in Figure 1.

Source: Bank of Japan

(a) Banks' asset portfolios: Bonds/loans ratio



(b) Annual growth rate of loans to corporations



(c) Average loan interest rate

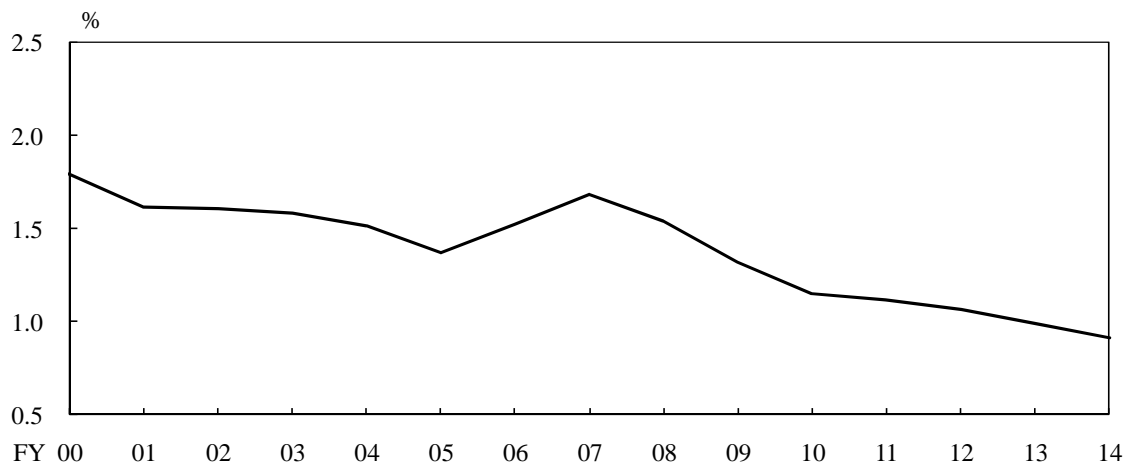


Table 1: Definition of variables

This table presents the definition of variables used in the main estimations (Table 3). All independent variables are as of 1 year prior ($t-1$) to the dependent variable $\Delta LOANS(t)$.

Variable	Definition
Dependent variable	
$\Delta LOANS$	Log change in firm i 's total loans outstanding from bank j . Loans outstanding include short-term loans, long-term loans, and bills discounted.
Key independent variables	
$\Delta BOND RATE$	Difference between the forward rate observed in year $t-1$ for 10-year bonds starting in year t and the forward rate observed in year $t-2$ for the same 10-year bonds starting in year t
$BK_CAPGAIN$	Bank j 's capital gains/losses due to changes in prices of bonds held
Macroeconomic controls	
$\Delta LOANRATE$	Change in average interest rate of newly contracted loans including bills discounted
ΔGDP	Change in Japan's nominal gross domestic product
$\Delta TOPIX$	Log change in Tokyo Stock Price Index (TOPIX)
Bank characteristics	
BK_CAP	The ratio of bank j 's net worth over total assets
BK_CAP_SQ	Squared value of bank j 's net worth ratio
BK_LIQ	The ratio of bank j 's liquid assets over total assets. Liquid assets include cash and due from banks, call loans, government bonds, and local government bonds.
BK_ROA	Bank j 's total net income over total assets
BK_lnTA	The logarithm of bank j 's total assets
BK_MAIN	1 if firm i regards bank j as its main bank, 0 otherwise
Firm characteristics	
F_CAP	The ratio of firm i 's net worth over total assets
F_LIQ	The ratio of firm i 's liquid assets over total assets
F_ROA	The ratio of firm i 's total net income over total assets
F_ASALES	Log change in firm i 's gross sales
F_lnTA	The logarithm of firm i 's total assets
F_lnAGE	The logarithm of (1 plus firm i 's age)
$F_lnNBANKS$	The logarithm of (1 plus the number of banks with which firm i transacts)

Table 2: Summary statistics

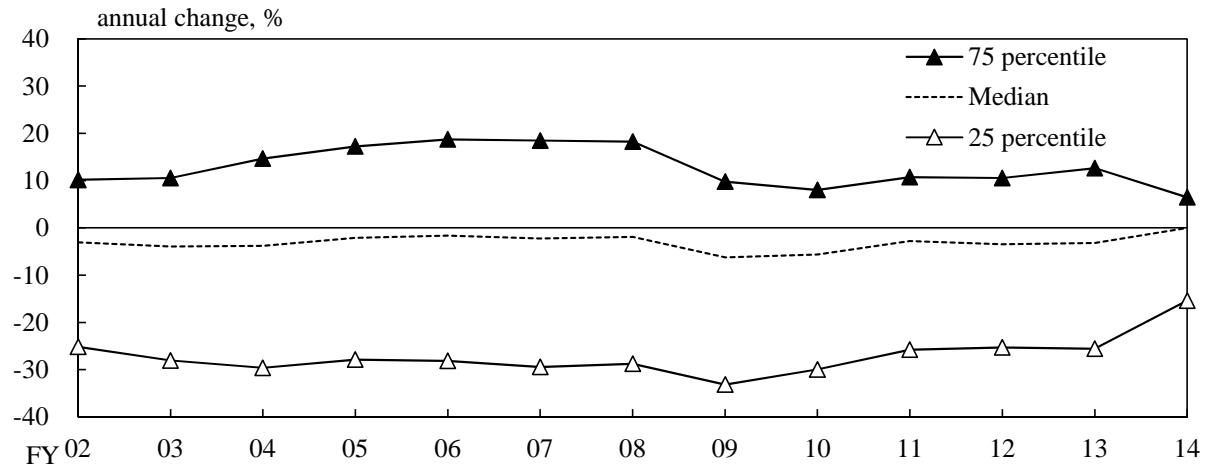
This table presents summary statistics of the variables used in the main estimations (Table 3). Definitions of variables are provided in Table 1.

Variable	Units	Mean	SD	Min	Median	Max
Dependent variable						
$\Delta LOANS$	%	-5.21	66.18	-310.27	-3.50	321.89
Key independent variables						
$\Delta BONDRATE$	% points	-0.35	0.32	-0.89	-0.45	0.21
$BK_CAPGAIN$	%	0.04	0.18	-1.53	0.08	1.59
Macroeconomic controls						
$\Delta LOANRATE$	% points	-0.05	0.12	-0.23	-0.05	0.15
ΔGDP	%	-0.60	1.87	-4.60	0.20	1.80
$\Delta TOPIX$	%	-4.41	16.85	-38.38	-2.34	38.53
Bank characteristics						
BK_CAP	%	4.55	1.43	0.38	4.50	15.54
BK_CAP_SQ	%	22.72	14.34	0.15	20.25	241.45
BK_LIQ	%	22.49	7.20	4.62	21.08	72.95
BK_ROA	%	0.60	0.24	-1.83	0.60	4.82
BK_lnTA	Mil. yen	16.05	1.85	10.69	15.58	19.02
BK_MAIN		0.37	0.48	0.00	0.00	1.00
Firm characteristics						
F_CAP	%	23.02	19.32	-99.41	20.00	88.93
F_LIQ	%	41.71	20.15	1.83	40.76	94.76
F_ROA	%	0.70	4.65	-40.15	0.77	21.63
F_SALES	%	1.21	21.91	-122.42	0.48	138.09
F_lnTA	1,000 yen	14.75	1.60	8.25	14.66	23.18
F_lnAGE	Years old	3.57	0.61	0.69	3.71	4.88
$F_lnNBANKS$	Banks	1.91	0.43	1.10	1.95	2.77

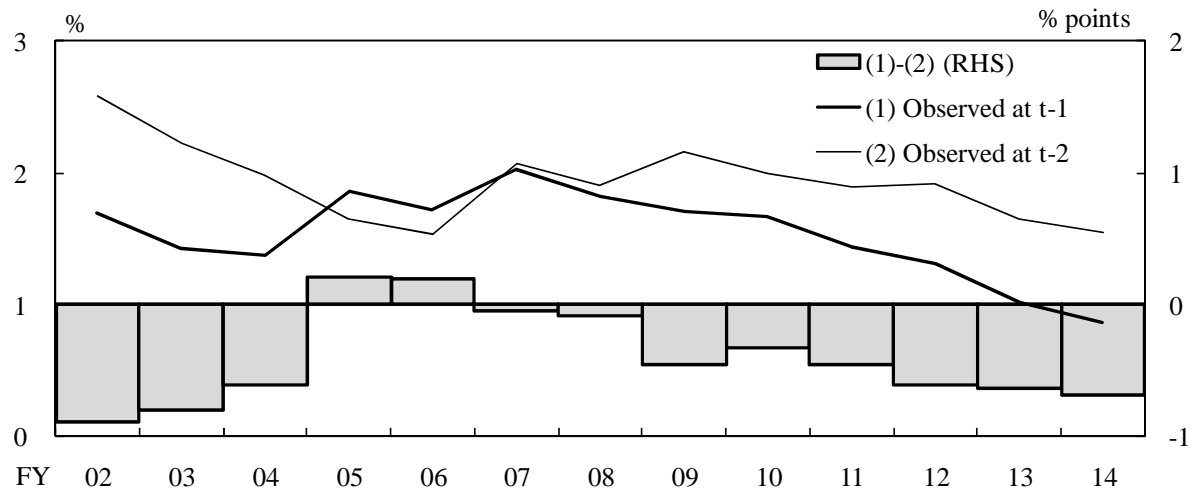
Figure 3: Developments in key variables

These figures present developments in key variables used in the main estimations (Table 3). Definitions of variables are provided in Table 1 and in the text.

(a) Bank loan growth rate ($\Delta LOANS$)



(b) 10-year forward rates ($\Delta BOND RATE$)



(c) Banks' capital gains ($BK_CAPGAIN$)

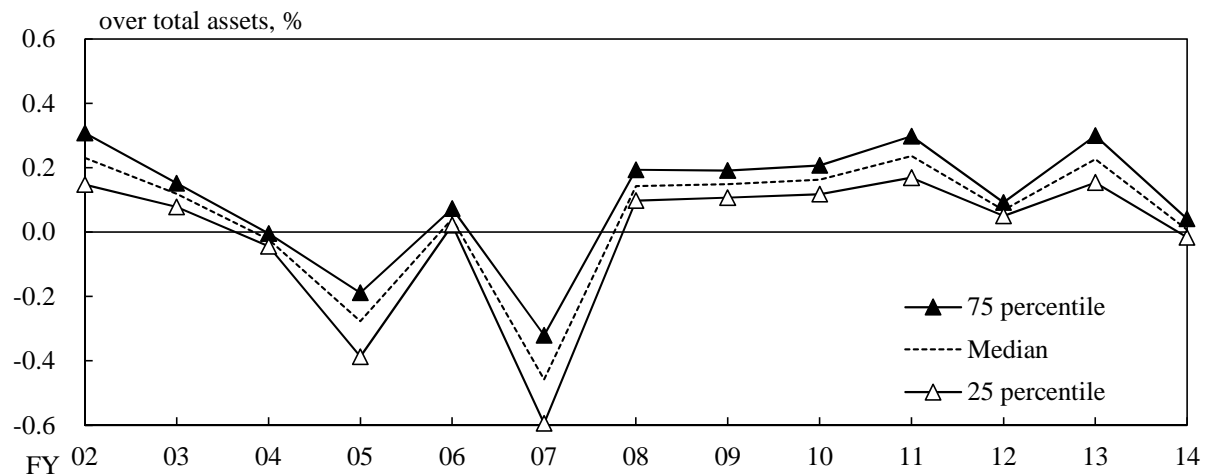


Table 3: Estimation results for bank loan growth

This table presents the estimation results on bank loan growth, $\Delta LOANS$, controlling for various covariates and fixed effects outlined in the text. ***, **, * indicate significance at the 1, 5, and 10% level, respectively. Standard errors in parentheses are heteroskedasticity-robust standard errors clustered at the bank level.

	(i)	(ii)	(iii)
Key independent variables			
$\Delta BONDRATE$	-1.59 (0.84)	*	
$BK_CAPGAIN$	4.60 (1.36)	***	3.57 (2.05) * 4.65 (2.78) *
Macroeconomic controls			
$\Delta LOANRATE$	7.18 (3.17)	**	
ΔGDP	-0.11 (0.21)		
$\Delta TOPIX$	0.16 (0.03)	***	
Bank characteristics			
BK_CAP	1.38 (0.68)	**	1.99 (0.70) *** 2.86 (1.00) ***
BK_CAP_SQ	-0.20 (0.08)	**	-0.22 (0.08) *** -0.31 (0.11) ***
BK_LIQ	-0.01 (0.12)		0.06 (0.12) 0.17 (0.11)
BK_ROA	-0.45 (1.12)		-0.65 (1.12) -1.83 (1.32)
BK_lnTA	-10.50 (4.37)	**	-7.47 (4.28) * -6.41 (4.13)
BK_MAIN	2.82 (0.64)	***	2.78 (0.64) *** 3.36 (0.69) ***
Firm characteristics			
F_CAP	0.46 (0.04)	***	0.47 (0.04) ***
F_LIQ	0.07 (0.02)	***	0.06 (0.02) ***
F_ROA	0.17 (0.04)	***	0.16 (0.04) ***
F_SALES	0.05 (0.01)	***	0.05 (0.01) ***
F_lnTA	-17.01 (1.56)	***	-17.47 (1.54) ***
F_lnAGE	-14.09 (2.37)	***	-6.05 (2.95) **
$F_lnNBANKS$	-4.57 (0.80)	***	-5.73 (0.83) ***
Fixed effects			
Firm	YES	YES	-
Year	NO	YES	-
Firm-year	-	-	YES
Bank	YES	YES	YES
Observations	379,989	379,989	379,989
Adjusted R^2	0.04	0.04	0.21

Table 4: Estimation results for bank loan growth: Interaction terms with banks' capital gains

This table presents the estimation results on bank loan growth, $\Delta LOANS$, when interaction terms between banks' capital gains, $BK_CAPGAIN$, and firm and bank characteristics are included. Columns (i)-(ii) show the results when $BK_CAPGAIN$ is interacted with a bank's capital-asset ratio and asset size, while columns (iii)-(v) show the results when $BK_CAPGAIN$ is interacted with a firm's asset size, capital-asset ratio, and TDB score, respectively. Columns (vi) and (vii) show the estimation results for triple interaction terms, i.e., when $BK_CAPGAIN$, the firm size dummy ($dum_F_lnTA_small$), and bank characteristics are interacted. Other independent variables included in the estimations are bank characteristics variables, firm-year fixed effects, and bank fixed effects (as in the specification in column (iii) of Table 3). ***, **, * indicate significance at the 1, 5, and 10% level, respectively. Standard errors in parentheses are heteroskedasticity-robust standard errors clustered at the bank level.

	(i)	(ii)	(iii)	(iv)	(v)
Interaction term with $BK_CAPGAIN$	$dum_BK_CAP_small$	$dum_BK_lnTA_small$	$dum_F_lnTA_small$	$dum_F_CAP_small$	$dum_F_SCORE_low$
Small (low)	6.18 (4.48)	4.05 (2.84)	15.52 *** (5.04)	9.13 *** (2.84)	6.79 * (3.60)
Large (high)	4.51 (2.74)	0.44 (4.72)	0.92 (2.91)	-2.38 (4.64)	3.98 (3.46)
Bank characteristics	YES	YES	YES	YES	YES
Fixed effects					
Firm-year	YES	YES	YES	YES	YES
Bank	YES	YES	YES	YES	YES
Observations	379,989	379,989	379,989	379,989	379,109
Adjusted R^2	0.21	0.21	0.21	0.21	0.21

		(vi)	(vii)
Interaction term with $BK_CAPGAIN$		$dum_F_lnTA_small \times dum_BK_lnTA_small$	$dum_F_lnTA_small \times dum_BK_CAP_small$
Firm	Bank		
Small	Small	14.25 *** (5.11)	19.94 *** (5.86)
Small	Large	6.09 (8.65)	14.90 *** (5.13)
Large	Small	0.57 (2.90)	1.18 (4.95)
Large	Large	-1.52 (4.13)	0.88 (2.85)
Bank characteristics		YES	YES
Fixed effects			
Firm-year		YES	YES
Bank		YES	YES
Observations		379,989	379,989
Adjusted R^2		0.21	0.21