

Mortgage Refinancing, Consumer Spending, and Competition: Evidence from the Home Affordable Refinancing Program

Sumit Agarwal^a

Gene Amromin^b

Souphala Chomsisengphet^c

Tomasz Piskorski^d

Amit Seru^e

Vincent Yao^f

AUGUST 2015

Abstract

We examine the ability of the government to impact mortgage refinancing activity and spur consumption by focusing on the Home Affordable Refinancing Program (HARP). The policy allowed intermediaries to refinance insufficiently collateralized mortgages by extending government credit guarantee on such loans. We use proprietary loan-level panel data from a large market participant with refinancing history and social security number matched consumer credit records of each borrower. A difference-in-difference empirical design based on eligibility requirements of the program reveals a substantial increase in refinancing activity by the program: more than three million eligible borrowers with primarily fixed-rate mortgages – the predominant contract type in the U.S. -- refinanced their loans under HARP. Borrowers received a reduction of around 140 basis points in interest rate, on average, due to HARP refinancing, amounting to about \$3,500 in annual savings per borrower. There was a significant increase in the durable spending by borrowers after refinancing, with larger increase among more indebted borrowers. Regions more exposed to the program saw a relative increase in non-durable and durable consumer spending, a decline in foreclosure rates, and faster recovery in house prices. A variety of identification strategies reveal that competitive frictions in the refinancing market may have partly hampered the program's impact. On average, these frictions reduced take-up rate among eligible borrowers by 10%-20% and cut interest rate savings by 16-33 basis points, with larger effects among the most indebted borrowers who were the key target of the program. These findings have implications for future policy interventions, pass-through of monetary policy through household balance sheets, and design of the mortgage market.

Keywords: Financial Crisis, HARP, Debt, Refinancing, Consumption, Spending, Household Finance, Mortgages, Policy Intervention

JEL Classification Codes: E65, G18, G21, H3, L85

**First Version: March 2014.* The paper does not necessarily reflect views of the FRB of Chicago, the Federal Reserve System, the Office of the Comptroller of the Currency, or the U.S. Department of the Treasury. Acknowledgements: The authors would like to thank Charles Calomiris, Erik Hurst, Arvind Krishnamurthy, Chris Mayer, Emi Nakamura, Stijn Van Nieuwerburgh, Tano Santos, Amir Sufi, Adi Sunderam and seminar participants at Columbia Business School, NBER Summer Institute, CEPR Gerzensee Summer Symposium, and Stanford Institute for Theoretical Economics, for helpful comments and suggestions. Zach Wade provided outstanding research assistance. Piskorski acknowledges funding from the Paul Milstein Center for Real Estate at Columbia Business School and the National Science Foundation (Grant 1124188). Seru acknowledges funding from the Initiative on Global Markets at Booth School of Business at the University of Chicago. a: National University of Singapore; b: Federal Reserve Bank of Chicago; c: OCC; d: Graduate School of Business, Columbia University and NBER; e: Booth School of Business, University of Chicago and NBER and f: Georgia State University.

I. Introduction

Mortgage refinancing is one of the main channels through which households can benefit from decline in the cost of credit. Indeed, because fixed rate mortgage debt is the dominant form of financial obligation of households in the U.S and many other economies, refinancing constitutes one of the main direct channels for transmission of stimulative effects of accommodative monetary policy (Campbell and Cocco 2003, Scharfstein and Sunderam 2014, Keys, Pope, and Pope 2014). Consequently, in times of adverse economic conditions, central banks commonly lower interest rates in order to encourage mortgage refinancing, lower foreclosures, and stimulate household consumption. However, the ability of such actions to influence household consumption through refinancing depends on the ability of households to access refinancing markets and on the extent to which lenders compete and pass-through lower rates to consumers.

While there is no work that has systematically analyzed these issues, the importance of the first factor became apparent in aftermath of the recent financial crisis when many mortgage borrowers lost the ability to refinance their existing loans (Hubbard and Mayer 2009).¹ Faced with a situation in which close to half of all borrowers in the economy were severely limited from accessing mortgage markets, the federal government launched a large-scale refinancing initiative called the Home Affordable Refinancing Program (HARP). In a nutshell, HARP allowed eligible borrowers with insufficient equity to refinance their mortgages by extending explicit federal credit guarantee to lenders. This paper uses HARP as a laboratory to examine the government's ability to impact refinancing activity and spur household consumption.

Our paper has two objectives. First, we want to quantify the impact of HARP on mortgage refinancing activity and analyze consumer spending and other economic outcomes among borrowers and regions exposed to the program. In doing so, we hope to assess consumer behavior around refinancing among borrowers with Fixed Rate Mortgages (FRMs), the predominant contract type in the U.S. Second, after demonstrating that a substantial number of eligible borrowers did not benefit from the program, we will analyze the importance of competitive frictions in the refinancing market in hampering HARP's reach. This sets us apart from prior work that has focused on borrower specific factors, like inattention, in explaining their sluggish response to refinancing incentives (Andersen, Campbell, Nielsen, and Ramadorai 2014).

We use a proprietary dataset from a large secondary market participant to execute our analysis. The dataset covers more than 50% of conforming mortgages (more than 20 million) issued with guarantees of the Government Sponsored Entities (GSEs). This loan-level panel data has detailed information on loan, property, and borrower characteristics and monthly payment history. Importantly, this data contains unique identifiers (Social Security Numbers) for each borrower

¹ CoreLogic estimates that in early 2010, close to a quarter of all mortgage borrowers owed more than their houses were worth and another quarter had less than 20% equity, a common threshold for credit without external support.

allowing us to construct their refinancing history, determine the *present* and *prior mortgage terms* during the refinancing process including fees charged by GSEs for insuring credit default risk (g-fee), the servicer responsible for their prior and current mortgage, as well as accurately capture various forms of consumer debt using their linked credit bureau records.

We start our analysis by assessing the impact of the program on the mortgage refinancing rate. To get an estimate of the counterfactual level in the absence of the program, we exploit variation in exposure of similar borrowers to the program. Specifically, we use high loan-to-value (LTV) loans sold to GSEs (the so-called conforming loans) as the treatment group since these loans were eligible for the program. Loans with observationally similar characteristics, but issued without government guarantees (non-agency loans), serve as a control group since these mortgages were ineligible for the program. Using difference-in-differences specifications we find a large differential change in the refinancing rate of eligible loans relative to the control group after the program implementation date. Thus, by addressing the problem of limited access to refinancing due to insufficient equity, HARP led to substantial number of refinances (more than 3 million). We also quantify the extent of savings received by borrowers on HARP refinances and find around 140 basis points of interest rate savings were passed through on the intensive margin. This amounts to about \$3,500 in annual savings per borrower -- a 20% reduction in monthly mortgage payments.

We also analyze the consumer spending patterns among borrowers who refinanced under the program. Our analysis based on new auto financing patterns suggests that borrowers significantly increased their durable (auto) spending (by about \$1,600 over two years) after the refinancing date, about 20% of their interest rate savings. This increase in spending is substantially larger among more indebted and less creditworthy borrowers. We augment this analysis by assessing how outcome variables, accurately measured at the zip code level -- such as non-durable and durable consumer spending, foreclosures, and house prices—changed in regions based on their exposure to the program. The advantage of this data is that it allows us to measure household consumption directly, including credit card spending, as well as analyze the broader effects of the program (e.g. on house prices). We find that regions more exposed to the program experienced a meaningful increase in durable and non-durable consumer spending (auto and credit card purchases), relative decline in foreclosure rate, and faster recovery in house prices.

Although the first part of the paper illustrates that the program had considerable impact on refinancing activity, it also shows that a significant number of eligible borrowers did not take advantage of the program. In the second part of our analysis, we investigate the role of intermediary competition in impacting HARP's reach and effectiveness.

There are at least a couple of reasons why competitive frictions could play an important role in the program implementation. First, to the extent that an existing relationship might confer some

competitive advantage to the incumbent servicer -- whether through lower (re-) origination costs, less costly solicitation, or better information regarding borrower conditions -- such advantages could be enhanced under the program since it targeted more indebted borrowers. Second, in an effort to encourage servicer participation, the program rules imposed a lesser legal burden on *existing* (incumbent) servicers.

To shed light on the importance of such factors, we start by comparing the interest rates on HARP refinances to the interest rates on regular conforming refinances originated during the same period (*HARP-conforming refi spread*). The latter group serves as a natural counterfactual, as the funding market for such loans – extended to creditworthy borrowers with significant housing equity -- was quite competitive and remained fairly unobstructed throughout the crisis period. Thus, the spread captures the extent of pass-through of lower interest rates to borrowers refinancing under the program *relative* to those refinancing in the conforming market. Importantly, we take advantage of our detailed data on fees charged by GSEs for insuring credit risk of loans (g-fees) to precisely account for differences in interest rates due to differential creditworthiness of borrowers refinancing in the two markets.

We find that, on average, a loan refinanced under HARP carries an interest rate that is 16 basis points higher relative to conforming mortgages refinanced in the same month. This suggests a more limited pass through of interest savings under HARP relative to the regular conforming market. The markup is substantial relative to the mean interest rate savings on HARP refinances (140 basis points). Notably, this spread persists when we account for a host of observable loan, borrower, property and regional characteristics. Moreover, the spread increases substantially with the current LTV of the loan, reaching more than 30 basis points for high LTV loans. These findings emerge despite the fact that in computing this spread we removed g-fees that account for differential mortgage credit risk due to higher LTV ratios. This finding is consistent with the idea that higher LTV loans, those with very limited refinancing options outside the program, may confer higher advantage to incumbent lender. In addition, we find that loans refinanced under the program by larger lenders – ones who are likely to have significant monopoly power in several local markets -- carry higher spreads.

Next, we exploit variation *within* HARP borrowers that relates the terms of their refinanced mortgages to the interest rate on their legacy loans, i.e., rate on the mortgage prior to HARP refinancing. The main idea underlying this test is that, in the presence of limited competition, incumbent lenders would extract more surplus from borrowers with higher legacy rates since such borrowers could be incentivized to refinance at relatively higher rates. Indeed, borrowers with higher legacy rates experience substantially smaller rate reductions on HARP refinances compared with otherwise observationally similar borrowers with lower legacy rates. These results survive when instrumenting the legacy interest rate on a mortgage with the 10-year U.S.

Treasury yield prevailing at the time of origination of the legacy mortgage to obtain variation in the borrower's legacy rate that is exogenous to individual and regional characteristics.

Finally, we take advantage of the change in the program rules introduced in January 2013 that relaxed the asymmetric nature of higher legal burden for new lenders refinancing under the program relative to incumbent ones. In essence, this change was aimed to alleviate the barriers to competition in the HARP refinancing market. We use a difference-in-difference setting around the program change to *directly* assess how changes in competition in the refinancing market impacted intensive (mortgage rates) and extensive (refinancing rates) margins. There is a sharp and meaningful reduction in the *HARP-conforming refi spread* (by more than 30%) around the program change. Moreover, there was a concurrent increase in the rate at which eligible borrowers refinanced under the program (6%) relative to refinancing rate in the conforming market. These estimates imply that the refinancing rate among eligible borrowers would be about 10 to 20 percentage points higher if HARP refinances were priced similar to conforming ones (accounting for variation in g-fees). The effects are the largest among the group of the borrowers that were the main target of the program – i.e., those with the least amount of home equity. These are also the borrowers, who as we show in the first part of the paper, also displayed larger increase in spending *conditional* on program refinancing. Overall, these results suggest that by adversely altering refinancing activity, competitive frictions may have significantly reduced the program effect on consumption of eligible households, especially those targeted by the program.

Our paper is closely related to a recent literature that examines the importance of institutional frictions and financial intermediaries in effective implementation of stabilization programs, particularly in housing markets. In particular, focusing on the Home Affordable Modification Program (HAMP), Agarwal et al. (2012) provide evidence that servicer-specific factors related to their preexisting organizational capabilities – such as servicing capacity -- can importantly affect the effectiveness of policy intervention in debt renegotiation that rely on such intermediaries for its implementation.² In contrast, our work suggests that competition in intermediation market may also play a role in effective implementation of some stabilization policies.

Our paper is also related to the growing literature on the pass-through of monetary policy, interest rates, and housing shocks through household balance sheets (e.g., Hurst and Stafford (2004), Mian, Rao, and Sufi (2013), Keys, Piskorski, Seru, and Yao (2014), Di Maggio, Kermani and Ramcharan (2014), Chen, Michaux, Roussanov (2014), Auclert (2015), Agarwal, Chomsisengphet, Mahoney, and Strobel (2015) and Beraja et al. (2015)). Within this literature

² Since HARP requires servicer participation for its implementation, such factors (e.g. servicer capacity constraints) could also affect the program reach. Notably, refinancing activity, the target of HARP, is a relatively a routine and fairly standardized activity that servicers have significant experience doing. In contrast, HAMP's objective was to stimulate mortgage renegotiation, a more complex activity that servicers have limited experience with and one that requires significant servicing infrastructure. Consequently, relative to HAMP, competitive frictions could play a more important role in HARP implementation compared with servicer organizational capabilities.

we provide a novel assessment of the largest policy intervention in refinancing market during the recent crisis. Our findings also complement those of Scharfstein and Sunderam (2014) who show that, in general, refinancing markets with a higher degree of lender concentration experienced a substantially smaller pass-through of lower market interest rates to borrowers.³

We also contribute to the vast literature on studying consumption responses to various fiscal stimulus programs. Some studies include Shapiro and Slemrod (1995, 2003), Jappelli et al. (1998), Souleles (1999), Parker (1999), Browning and Collado (2001), Stephens (2008), Johnson, Parker, and Souleles (2006), Agarwal, Liu, and Souleles (2007), Aaronson et al. (2012), Mian and Sufi (2012), Parker, Souleles, Johnson, and McClelland (2013), Gelman et. al. (2014) and Agarwal and Qian (2014).⁴ Our analysis relies on a period with lower interest rates, where borrowers with insufficiently collateralized mortgages had large incentives to refinance, but were unable to do so (Hubbard and Mayer 2009). HARP generated an exogenous increase in supply of refinancing opportunities and we find significant increase in consumer spending among borrowers and regions exposed to the program. This finding is consistent with the contemporaneous work by Amromin, Di Maggio, and Kermani (2015) who also find that borrowers increase their spending after HARP refinancing and comprehensively explore the mechanisms driving the borrower response. Together, this evidence suggests that consumer spending response to mortgage refinancing can be an important part of transmission of monetary policy to the economy since lower rates generally induce more refinancing.

Our paper is also related to the recent empirical literature that studies borrowers' refinancing decisions (e.g., Koijen et al. 2009, Agarwal, Driscoll and Laibson 2013; Keys, Pope and Pope 2014, Agarwal, Rosen and Yao 2014; Anderson et. al. 2014). This literature focuses on borrower specific factors like limited inattention and inertia in explaining their refinancing decisions. While such borrower specific factors can also help account the muted response to HARP (see Johnson et al. 2015 for recent evidence), our work emphasizes the importance of financial intermediaries and the degree of market competition in explaining part of this shortfall.

Finally our work relates broadly to the recent growing literature on the housing and financial crisis (e.g., Mayer et al. 2009 and 2014; Keys et al. 2010, 2012; Charles, Hurst and Notowidigdo 2013, Favilukis, Ludvigson, and Van Nieuwerburgh 2013; Eberly and Krishnamurthy 2014, Hsu, Matsa and Melzer, 2014, Melzer 2014, Stroebel and Vavra 2014). We contribute to this literature by providing the first comprehensive assessment of the largest intervention aimed at stimulating mortgage refinancing during the Great Recession.

³ Within a broader context on market competitiveness and pricing power, this paper is related to the seminal work of Rotemberg and Saloner (1987) and to the earlier empirical research on pass through of changes in interest rates by lenders in different competitive environments (e.g., Neumark and Sharpe 1992).

⁴ The literature finds mixed evidence: some studies find that the consumption response is essentially zero, while other find that liquidity constrained consumers respond positively to the fiscal stimulus programs.

II. Background and Empirical Strategy

II.A U.S. mortgage markets before and during the Great Recession

The U.S. mortgage markets are characterized by several unique features. First, a majority of mortgage contracts offer fixed interest rates and amortize over long time periods, commonly set at 15 or 30 years. Second, most mortgages can be repaid in full at any point in time without penalties, typically by taking out a new loan backed by the same property (refinancing). Finally, the majority of mortgages, the so-called conforming loans, are backed by government-sponsored enterprises or GSEs.⁵ The GSEs guarantee full payment of interest and principal to investors on behalf of lenders and in exchange charge lenders a mixture of periodic and upfront guarantee fees (called “g-fees”). In practice, both types of g-fees are typically rolled into the interest rate offered to the borrower and are collected as part of the monthly mortgage payment. The interest rates charged to borrowers are thus affected by three main components: the yield on the benchmark Treasury notes to capture prevailing credit conditions, the credit profile of the borrower that affects the g-fee charged for insurance of default risk (which depends on factors such as FICO credit score and LTV ratio), and finally, a lender’s markup. In addition the borrowers need to satisfy a set of criteria to be eligible for conforming financing based on factors such as loan amount and LTV ratio.⁶

Under this institutional setup, a borrower with a FRM might be able to take advantage of declines in the general level of interest rates by refinancing a loan. The economic gain from refinancing is clearly affected by potential changes in borrower creditworthiness, as well as the mortgage market environment. During periods of favorable economic conditions, such as those between 2002 and 2006, refinancing market functioned smoothly. Borrower incomes and credit scores remained steady. Home prices increased, allowing equity extraction at refinancing while maintaining stable LTV ratios. Defaults were rare and supply of mortgage credit was plentiful.

Each of these components changed dramatically during the Great Recession. Rapidly rising unemployment rates and the attendant stress to household ability to service debt obligations impaired income and credit scores. As home prices dropped precipitously, many borrowers were left with little or no equity in their homes, making them ineligible for conforming loan refinancing. By early 2010, close to a quarter of all mortgage borrowers found themselves

⁵ As of the end of 2013, GSE-backed securities (agency mortgage backed securities [MBS]) accounted for just over 60% of outstanding mortgage debt in the U.S. About half of the agency MBS market is backed by Fannie Mae, slightly less than 30% is backed by Freddie Mac, and the rest is backed by Ginnie Mae, which securitizes mortgages made by the Federal Housing Administration (FHA) and Veterans Administration (VA). For the purposes of this paper, our discussion of GSEs will be limited to the practices of Fannie Mae and Freddie Mac. FHA and VA mortgages also represent an important source of funding, particularly for low down-payment loans to borrowers with somewhat impaired credit history. However, they remain beyond the scope of this paper.

⁶ Conforming mortgages cannot exceed the eligibility limit, which has been \$417,000 since 2006 for a 1-unit, single-family dwelling in a low-cost area. In addition, most such loans have LTV ratios at origination no greater than 80%.

“underwater”, i.e. owing more on their house than it was worth (CoreLogic data). Refinancing was also made more difficult by a virtual shutdown of the private securitization market, as investors fled mortgage-backed securities not explicitly backed by the federal government leading to a massive exit of lenders from the subprime mortgage industry.⁷ Since refinancing underwater or near-underwater loans would be considered extending unsecured credit and trigger prohibitive capital charges, balance sheet (portfolio) lending for such borrowers dried up as well.

Overall, due to the environment in the credit industry, borrowers with insufficient home equity were shut out of refinancing markets, even as countercyclical monetary policy actions drove mortgage interest rates to very low levels.

II.B The Home Affordable Refinancing Program (HARP) and asymmetric pricing power

In the face of massive disruptions in mortgage markets, the Treasury Department and the Federal Housing Finance Agency (FHFA) developed a program to allow households with insufficient equity to refinance their mortgages. This policy action – the Home Affordable Refinancing Program, or HARP –instructed GSEs to provide credit guarantees on refinances of conforming mortgages, even in cases when the resulting loan-to-value ratios exceeded the usual eligibility threshold of 80 percent. Initially, only loans with an LTV of up to 105% could qualify. Later in 2009, the program was expanded to include loans with an estimated LTV at the time of refinancing up to 125%. Finally in December 2011, the program rules were changed again by removing any limit on negative equity for mortgages so that even those borrowers owing more than 125% of their home value could refinance, creating what is referred to as “HARP 2.0”. After a number of extensions of its end date, HARP is scheduled to end on December 31, 2016.

Given the size of GSE-backed mortgage holdings, opening up refinances for this segment of the market had the potential to influence household consumption. Although refinancing imposed losses on the existing investors in mortgage backed securities (MBS) who had to surrender high-interest paying assets in a low-interest-rate environment, it benefitted borrowers who lowered their interest payments and received a substantial reduction in the NPV of their mortgage obligations (Eberly and Krishnamurthy 2014). Consequently, HARP aimed to provide economic stimulus to the extent that liquidity-constrained borrowers had higher marginal propensities to consume than MBS investors. It also potentially lowered the likelihood of delinquencies and subsequent foreclosures that may result in substantial deadweight losses (Mian et al. 2011).

HARP got off to a slow start, refinancing only about 300,000 loans during the first full year of the program. Overall, more than 3 million borrowers refinanced during the first five years of the

⁷ Most prominent subprime lenders failed outright (e.g., Countrywide, Washington Mutual, Wachovia, IndyMac, and Lehman Brothers).

program, which amounts to up to between 40 to 60 percent of potentially eligible borrowers as of the program start date in March 2009.⁸

Market commentary pointed to a number of flaws in the program design, which included frictions with junior liens and origination g-fee surcharges (LLPAs) that limited borrowers' potential gains from refinancing. Crucially, lender willingness to participate in HARP was potentially undermined by ambiguities about the program's treatment of representations and warranties (R&W).⁹ Any mortgage found to be in violation of its R&W can be returned ("put back") to the originator, who would then bear all of the credit losses. The risk of put backs became particularly pronounced in the wake of the financial crisis when mortgage investors and GSEs began conducting aggressive audits for possible R&W violations on every defaulted loan. In the case of low-equity and underwater loans targeted by HARP the risk of default was considered to be particularly high. As a result, mortgage originators that securitized their loans through GSEs could have regarded R&W as a major liability.

Policymakers recognized this issue and HARP lessened the underwriting requirements and the attendant R&W on loans refinanced through the program. However, this relief from put back risk on refinanced loans was granted *asymmetrically*, favoring lenders that were *already* servicing mortgages prior to their being refinanced through HARP.¹⁰ Such lenders faced few underwriting requirements and little exposure to this risk. In contrast, lenders that were refinancing mortgages that they did not already service had to face stringent R&W treatment.¹¹ Finally, HARP rules were also asymmetric in servicer treatment since the program required less onerous underwriting if performed through a borrower's existing servicer rather than through a different servicer.¹²

II.C *Post-HARP 2.0 developments*

In January 2013, FHFA addressed concerns about the open-ended nature of R&W violation reviews. This took on two forms: (1) FHFA clarified a sunset provision for R&W reviews, setting the time frame over which such reviews could be done at 1-year for HARP transactions;

⁸ The estimates on the number of potentially eligible borrowers vary. Based on Treasury and FHFA estimates up to 8 million of borrowers could have been eligible for the program (with an estimated 4-5 million borrowers having the opportunity to refinance under HARP 1.0 with up to additional 2-3 million borrowers becoming eligible due to the removal of LTV eligibility limit under HARP 2.0). See FHFA, "HARP: A Mid Program Assessment" (2013).

⁹ In every transaction, the mortgage originator certifies the truthfulness of information collected as part of the origination process, such as borrower income, assets, and house value. This certification is known as R&W.

¹⁰ Mortgage originators that securitized loans through GSE typically retained servicing rights on those mortgages. In their role as a servicer, they collected payments, advanced them to the MBS trustee, and engaged in a variety of loss mitigating actions on delinquent loans. We use the terms "servicer" and "lender" interchangeably.

¹¹ This difference in treatment may result in higher expected origination costs for would-be competitors of existing lenders. Additionally, this market power to existing servicers may have been more consequential in the case of high LTV borrowers since such borrowers would be associated with greater default risk, and hence higher put back risk.

¹² For instance, under HARP the lender had to verify that eligible borrowers missed at most one payment on their existing loan during the previous 12 months. This information was already available with the incumbent lender.

(2) FHFA clarified which violations were subject to this sunset and which were severe enough (e.g. fraud) to be subject to life-of-the-loan timeframe. These changes went into effect in January 2013. The clarification of the R&W process may have had a direct effect on the competitive advantage of same-servicer HARP refinances. Before the sunset provisions, a new servicer was taking on an indefinite (or at least ambiguous) R&W risk. However, with the provision in place, this risk was limited to a 1-year window for a pre-specified set of violations.

III. Data and Empirical Setting:

III.A Data

The main data used in this study comes from a large proprietary database of conforming mortgages securitized by a large secondary market participant. The conforming loans are mortgages that satisfy the underwriting guidelines of GSEs (such as Fannie Mae and Freddie Mac). These mortgages are usually made to borrowers with relatively high credit scores, low initial LTV ratios, and fully documented incomes and assets. In addition, these mortgages must meet the conforming loan limit. Recall that only conforming mortgages were eligible for refinancing under HARP. Thus, our data, which covers more than 50% of conforming loans -- amounting to more than 20 million of outstanding residential mortgages as of the program implementation in March 2009 -- is well suited to study the program.

This loan-level monthly panel data has detailed dynamic information on rich array of loan, property, and borrower characteristics (e.g., interest rates, location of the property and current borrower credit scores and LTV ratios) and monthly payment history (e.g., delinquent or not). Importantly, as this data contains unique Social Security Numbers (SSN) for each borrower, we can track the refinancing history of each borrower, the servicer responsible for prior and current mortgage of the borrower, and whether refinancing was done under HARP. This matched data allows us to obtain all the *present* and *prior mortgage terms* including all relevant information on fees applied during the refinancing process including GSE g-fees.

This detailed panel data on the refinancing history of each borrower constitutes a considerable advantage over commercially available products, which do not provide information on the entire sequence of transactions at the borrower level. This rich data allows us to account for detailed borrower level characteristics as well as conduct *within* borrower analysis to assess how terms of loans obtained under HARP relate to the terms of their previous transactions.

The data provider has merged the mortgage data with each borrower's consumer credit bureau records by using unique borrower identifier. These merged data allow us to observe the current credit history of mortgage holders in each month. Of particular importance to us is the auto debt balance information, which allows us to construct empirical measures of new auto spending

patterns at the borrower level. Our data ends in mid-2013, a period after which there were relatively few HARP originations.

In our analysis we also employ the loan-level mortgage data collected by BlackBox Logic that covers more than 90% of privately securitized mortgages that were not sold to GSEs. These data were merged with borrower-level credit report information collected by Equifax using a proprietary match algorithm giving us a similar set of variables as our main dataset.¹³ We focus on a set of borrowers with loans in this data that are similar on observables to those in our main sample. However, as these loans were not sold to GSEs they were not eligible for the program. Consequently, this group of loans serves as a counterfactual for the loans that could be potentially refinanced under the program.

Finally, in our regional analysis we collect individual loan-level information from four databases. The first source is the LPS database maintained by Black Knight Financial Services, which provides dynamic information on the vast majority of loans in the United States. We complement this dataset with the information from the BlackBox database, which yields almost complete coverage of mortgage loans in the United States, allowing us to compute zip-code-level characteristics for variables such as average borrower FICO credit scores, fraction of HARP eligible loans among all mortgages in a zip code, average mortgage interest rates, as well as zip code level foreclosure rates. The second dataset provided by the Office of the Comptroller of Currency allows us to measure the quarterly credit card spending of borrowers in a particular zip code. The third database comprises the auto sales data from R. L. Polk & Company (see Mian, Rao, and Sufi 2013), which allows us to directly measure the car purchases in a zip code. Finally, we also use zip code level house price indices from CoreLogic.

III.B Empirical Setting

Our empirical analysis consists of two main parts. In the first part we aim to quantify the impact of HARP on mortgage refinancing and assess household spending and other economic outcomes around the program implementation. In the second part, we investigate the role of intermediary competition on the reach and effectiveness of the program.

We start our analysis by assessing the impact of the program on the mortgage refinancing rate. We focus on fixed-rate mortgages, the predominant mortgage type in the U.S., which, unlike adjustable-rate mortgages, cannot automatically benefit from lower market rates. To get an estimate of the counterfactual level in the absence of the program, we exploit variation in exposure of similar borrowers to the program. Specifically, high LTV loans sold to GSEs (“conforming” loans) serve as the treatment group, while loans with observationally similar

¹³ BlackBox is a private company that provides a comprehensive, dynamic dataset with information on privately securitized subprime, Alt-A, and prime loans originated after 1999. Equifax is a major credit reporting agency that provides monthly data on consumer credit standing.

characteristics but issued without government guarantees (“non-agency” loans) – ineligible for the program -- serve as a control group. Using a difference-in-differences specification we will assess the differential change in the refinancing rate of the treatment group relative to the control group around the program implementation date. The identification assumption behind this comparison is that, in the absence of the program, the refinancing rates in the control and treatment groups would follow similar patterns (up to a constant difference).

Next we quantify the extent of savings received by borrowers refinancing under HARP and shed some light on consumer spending patterns around the refinancing activity under the program. For this purpose, we exploit the richness of our data -- in particular the ability to track borrowers across transactions matched to consumer credit bureau records using SSNs -- to construct empirical proxies capturing consumer durable spending patterns. This data allows us to assess the reduction in interest rates provided to borrowers who refinanced under HARP, as well as track changes in their consumption activity around refinancing dates.

Finally, we conclude the first part of our analysis by assessing regional outcome variables such as non-durable consumer spending, foreclosures, and house prices in regions more exposed to the program. Here, we rely on zip code data, since we do not have more micro data for variables like consumer credit card spending or house prices. The main challenge when attempting to infer such a connection is that a national program such as HARP affects borrowers in all regions. We address this challenge by exploiting regional heterogeneity in the share of loans that are eligible for HARP. In particular, we obtain a measure of ex-ante exposure of a region to the program as the regional (zip code) share of conforming mortgages with the high LTV ratios. We account for general trends in outcomes during the program period by focusing on relative change in the evolution of outcomes between regions with differential ex-ante exposure. This approach is similar to one used in Mian and Sufi (2012) and Agarwal et al. (2012).

In the second part of our analysis, we investigate the role of intermediary competition on the reach and effectiveness of HARP. The main obstacle in evaluating the potential role of limited competition is to get an estimate of the counterfactual level in the absence of such frictions. We circumvent this issue in three ways.

First, we construct the difference in interest rates on HARP refinances and regular conforming refinances, both originated during the same period and made to borrowers of similar credit risk (“*HARP-conforming refi spread*”). The regular conforming refinances represent creditworthy borrowers with significant housing equity who could refinance outside of HARP. This group serves as a natural counterfactual since the market for such loans was quite competitive and remained fairly unobstructed throughout the period of study. In computing the spread, we also take advantage of our detailed data that allows us to precisely account for variation in interest rate spreads due to differences in loan credit risk by absorbing variation due to g-fees. In our

empirical tests we assess how the *HARP-conforming refi spread* varies with LTV of the loan and across lenders, while accounting for the rich array of borrower, property, and loan characteristics. Higher LTV loans should see higher spreads since they may be subject to more limited competition due to a stronger incumbent advantage. Similarly, loans made by larger lenders, who may operate as monopolists in several markets, might see larger spreads.

While potentially suggestive, the first set of tests may not fully address the concerns that such differences may reflect other factors besides competitive frictions. To address such concerns, in our second set of tests, we exploit variation within HARP borrowers. In particular, we relate the terms of refinanced mortgages to the empirical measure of their bargaining power. As we discuss in detail in Section V.C, in the presence of competitive frictions, all else equal, borrowers with higher legacy rates -- i.e., rates on mortgages prior to HARP refinancing -- should face larger markups on their refinanced loans.

Finally, in our key test, we exploit the change in the program rules from January 2013 onwards that lowered the put back risk of new lenders for loans originated previously by other lenders. As discussed in Section II.C, this change effectively alleviated barriers to competition in the HARP refinancing market. To the extent these barriers were quantitatively important, we expect to see a meaningful reduction of the *HARP-conforming refi spread* after the program change and an increase in refinancing activity under the program. In particular, we exploit a difference-in-differences setting, analyzing the differential change in HARP interest rate (intensive margin) and refinancing activity (extensive margin) relative to mortgage rates and refinancing activity of regular conforming loans around the program change date.

IV. Program Effect

IV.A Descriptive Statistics

We start our analysis by presenting the characteristics of loans that were eligible to be refinanced under HARP and contrasting these with similar loans that were not eligible for the program. As we discussed in Section III.B, the latter group serves as a counterfactual for the loans that can be potentially refinanced under the program. In particular, the treatment group consists of all GSE loans that would have been HARP eligible (that is GSE loans with current LTV greater than 80%) and the control group consists of all loans that are similar on all other dimensions (such as FICO, LTV and interest rates) except that these are non-GSE loans and therefore are ineligible for HARP. We track the refinancing patterns of these loans from April 2008 to December 2012.

Table 1 discusses the summary statistics of loans in the treatment and control groups over the period before the program (i.e., from April 2008 to February 2009). As can be seen loans in the two groups consist of borrowers with similar FICO scores (728 in the control group versus 713 in the treatment group), LTV ratios (93.6 in the control group versus 95.5 in the treatment

group)¹⁴ and interest rates (6.8 in the control group versus 6.6 in the treatment group), and similar outstanding loan balances (\$190,000 in the control group and \$183,000 in the treatment group) Notably, although these are static (small) differences, in unreported tests we also confirm that these differences remain similar throughout the pre-program period. While the identification assumption -- i.e., the trends in various key observables in the treatment and control group are parallel -- is satisfied for our analysis, we nevertheless conduct our analysis on a matched sample of treatment and control loans. The matching is one-to-one done based on FICO, LTV and interest rates. The results are similar if we estimate our results on the unmatched sample instead.

IV.B Micro Analysis: Refinancing Activity

Figure 1A presents the first set of results related to the program. Here we plot the quarterly HARP refinancing rate in the treatment group. As can be observed, not surprisingly, there is a gradual increase in the refinancing activity done under the program once the program starts in 2009:Q1.¹⁵ The estimates presented in the figure suggest that the refinances done in the treatment group under the program -- i.e., the fraction of treatment loans refinanced under HARP every quarter -- is about 1.6%. In terms of cumulative effect over the sample period being depicted in the figure (until December 2012), we get about 25% of the eligible loans being refinanced under the program. As per the US Treasury, up to 8 million loans were broadly eligible for HARP (see Section II.B). Hence, our estimates applied to the entire stock of potentially eligible mortgages imply that about 2 million loans were refinanced under the program by end of 2012 and about 3 million loans by end of 2014. This compares well with the 2.16 million loans refinanced under HARP by 2012 and the 3.27 million loans reported by the US Treasury by December 2014.

The above analysis focuses only on HARP refinancing activity done on the GSE loans that were eligible under the program. However, the overall effect of the program on refinancing activity among the eligible loans also needs to account for any changes in refinancing activity that are induced on refinances done outside the program. To do so we estimate the differential change in *total* refinancing activity -- i.e., refinancing done under HARP or otherwise -- in the treatment loans relative to the control loans. In particular, we estimate a difference-in-difference estimation around the program start date, reporting the estimates on differential change in refinancing activity after conditioning on borrower and loan characteristics. As can be observed from Figure 1B, the overall effects on refinancing activity are similar to the direct treatment effect implied by the program refinances. Moreover, we do not observe significant differential changes in the refinancing rate between the treatment and control groups prior to the program, which yields further support to the validity of our empirical design.

¹⁴ Our main data includes monthly information on the current LTV ratio of the GSE loan. For non-GSE loans we compute the current LTV in each month using information on the loan's outstanding balance and the appraised property value (computed with use of the zip code level CoreLogic house price indices)

¹⁵ It is worth noting that take up rate was initially on the slower side and picked up from December 2011 once "high LTV" loans (i.e., loans with LTV of greater than 125) were made eligible under the program.

In Table 2A, we present the overall estimates of the program effect also accounting for various controls. In particular, in Columns (1) to (4) we use whether or not a loan refinances in a given quarter as the dependent variable and estimate the change in this variable for treatment loans relative to the control sample, accounting for a rich set of loan, borrower, and regional characteristics. The key explanatory variable is the *HARP Eligible* \times *After Q1 2009* that captures the differential change in refinancing rate of HARP eligible loans relative to confirming refinances after the program start date (after Q1 2009). As is evident, on average, we find that the treatment loans see an increase in refinancing activity by about 1.4-1.7% every quarter, the estimates that are in line with the ones implied by the direct program effect.

Taken together this evidence suggests that the program induced a significant increase in refinancing activity, although a sizeable proportion of eligible loans did not refinance under the program. Moreover, our findings suggest the program did not lead to a significant substitution of refinances performed outside of the program with ones done under HARP. This is not surprising once we note that both the treatment and control groups experienced very low refinancing rates prior to the program, due to virtual shutdown of the refinancing market for loans with high LTV ratios in the period before the program.

The analysis so far has focused on the extensive margin (i.e., new refinancing activity). In Table 2B we turn our attention to the intensive margin to assess the extent of savings received by borrowers refinancing under HARP. Columns (1) and (2) present the results on the treatment loans where the dependent variable is the difference between the interest rate in a given quarter and initial interest rate. The variable, *After HARP*, takes the value of one in the quarters following the HARP refinancing date and is zero otherwise. The results suggest that borrowers refinancing under the program obtained a reduction of roughly 1.4 percentage points (140 basis points) in their mortgage rate. These results are robust to including MSA fixed effects as well as a variety of borrower and loan level controls. This is an economically significant reduction since the average pre-program mortgage rate among the eligible sample is 6.6%. As Columns (3)-(4) of Table 2A indicate this mortgage interest rate reduction implies about \$884 in savings to the borrowers per quarter, translating into about \$7,000 in cumulative savings over the two-year period following the HARP refinancing date.

Overall, the results in Section IV.B suggest that the program led to a significant increase in refinancing activity among eligible loans and, conditional on refinancing under the program there were significant savings received by the borrowers.

IV.C Micro Analysis: Consumer Spending

We now assess changes in consumer spending patterns around the refinancing activity under the program. In particular, we use individual consumer credit bureau records merged with the dynamic mortgage performance data using each borrower's SSN. This data allows us to observe

the current credit history of mortgage holders during the months preceding and following the HARP refinancing date. Using this data, we can identify new auto financing transactions within each borrower (new purchases financed with auto debt or new car leases), since such transactions are usually accompanied by a significant discontinuous increase in a borrower's outstanding auto debt. It also allows us to measure a net dollar increase in new auto consumption associated with such new auto financing transactions (e.g., a difference between a new and prior auto debt level when new auto financing happens). As the vast majority of auto purchases in the U.S. are financed with debt (up to 90% according to reports by CNW Marketing Research), we will use these variables as empirical proxies capturing consumer durable spending patterns.¹⁶

We first investigate whether borrowers change their durable spending patterns after HARP refinancing. For that purpose we estimate a specification where the dependent variable takes the value of one if a new auto financing transaction takes place within a given borrower in a given quarter and is zero otherwise. In this specification we include a set of controls capturing borrower, loan, and regional characteristics. Again, the key control is the *After HARP*, which takes the value of one in the quarters following the HARP refinancing date. The results are presented in Columns (5) and (6) of Table 2B.

On average, there is an increase in the quarterly probability of new car purchases associated with new auto financing after the HARP refinancing by about 0.8% implying 6.4% absolute increase during the two years following the refinancing date. This amounts to an increase of about 10% relative to the mean level probability of new auto financing prior to the HARP refinancing. Columns (7) and (8) present the analogous regressions using the net dollar increase in auto debt associated with new auto financing transactions (the difference between new and prior auto debt in the quarter of new car purchase) as the dependent variable instead. The estimates suggest a net increase in the auto consumption on the order of \$185-\$198 per quarter after HARP refinancing amounting to about \$1,600 over the period of two years following the refinancing date. Combining this effect with the estimated savings due to HARP refinancing from Columns (3) and (4) of Table 2B suggests that the borrowers allocate about 20-22% of the extra liquidity generated by rate reductions to new car consumption. These findings are consistent with contemporaneous work by Amromin, Di Maggio, and Kermani (2015) who find that borrowers increase their spending after HARP refinancing date and explore channels driving the borrower response. Notably, this elasticity is also qualitatively and quantitatively similar to that found in Keys et al. (2014) and Di Maggio et al. (2014) who study the effects of mortgage rate reductions due to rate resets among borrowers with adjustable-rate mortgages.

Next, we assess the dynamics associated with these spending patterns among refinancing borrowers. In particular, we use the same specification as above but include a set of quarterly

¹⁶ We identify new auto financing transactions if the borrower auto balance increases in a given month by at least \$2,000. Our results are robust to perturbations around these thresholds (e.g., \$3000 or \$5000 thresholds).

time dummies that capture the three quarters preceding the HARP refinancing and the eight quarters following the HARP refinancing date (instead of the *After HARP* dummy). Appendix A.1 shows the estimated quarterly time effects from this specification along with 99% confidence intervals. As we observe, the borrowers do not display differential changes in the quarterly probability of new auto financing or net dollar increase in new auto financing prior to the HARP refinancing. After the HARP refinancing, however, we observe a significant increase in both the probability and net dollar amount of new auto financing. Notably, although the largest effect occurs during the second quarter after the refinancing date, we observe a persistent increase in the probability of buying a new car and the associated net dollar increase in financing even two years after the refinancing date.¹⁷

Figure 2A shows the cumulative increase in the net dollar amount of new auto financing implied by the estimated quarterly time effects we discussed above. As can be observed, borrowers display a net increase in new car consumption after the HARP refinancing, with the cumulative effect of about \$1,600 over the two-year period. This economic effect is in line with the average effect reported in Table 2B.

Our estimates based on the analysis above suggest that borrowers who refinanced under the program significantly increased their spending on durables (new cars). An obvious concern with taking these effects as being induced by refinancing is that the decision to refinance under the program could be endogenously determined along with other consumer activity (such as spending on automobiles). Note that the effects we document are not only centered at the quarter of HARP refinancing but present across the board after the refinancing. This suggests that these findings may not just be reflecting endogenous timing by borrowers. Nevertheless, it is possible that the refinancing was initiated by borrowers anticipating a change in auto spending well into the future. We therefore conduct two more tests to shed more light on this issue.

First, we isolate our analysis to subset of high LTV borrowers who refinanced their loans in the vicinity of the program announcement. In other words, the decision to refinance for the bulk of these borrowers was essentially determined by the supply of refinancing – made possible once the program was initiated. We find similar effects for such borrowers.

In the second test, we assess changes in consumer spending among eligible loans relative to a control group of borrowers – i.e., loans in the non-GSE market with characteristics that are similar to loans eligible for HARP as described in Table 1. We find a significant relative increase in the probability of new auto financing (about 0.18% per quarter) and auto consumption (about

¹⁷ It is useful to contrast these findings with Mian and Sufi (2012) who analyze the 2009 CARS program consisting of government payments to car dealers for every older less fuel efficient vehicle traded in by consumers for a fuel efficient one. They find that almost all of the additional purchases under the program were pulled forward from the very near future. Our contrasting results might reflect the fact that the nature of stimulus is different under HARP: refinancing generates persistent interest savings that can amount to tens of thousands dollars over time.

\$43 per quarter) among the eligible loans relative to the control group after the program implementation date (March 2009).¹⁸ Moreover, these estimates are very consistent with the magnitudes of the estimates from Table 2A-B. In particular, the results in Table 2A imply that the program induced about one-fourth of eligible borrowers to refinance their loans by December 2012. Hence, we would expect the estimated magnitude of the differential increase in auto consumption among eligible borrowers relative to the control group to be roughly one-fourth of the estimated values presented in Table 2B provided that these values reflect the true treatment effect of HARP refinancing on new auto consumption. This is precisely what we find.

Next we explore heterogeneity in these findings. In particular, we assess if these effects vary depending on the creditworthiness and wealth of borrowers. We sort borrowers into two groups based on their housing wealth, as proxied by their current LTV ratios (Panel B) and based on their creditworthiness (Panel C), as proxied by their FICO scores. Figure 2B and 2C shows the estimated cumulative increase in net dollar amount of new auto financing in these groups. As is evident, there is a significant heterogeneity in this effect across borrowers. During the first years after HARP refinancing, borrowers with lower housing wealth (above median LTV ratios) experience about a 20% larger increase in new auto consumption relative to borrowers with below median LTV ratios. Less creditworthy borrowers (below median FICO scores) experience about a 50% larger increase in new auto financing after HARP refinancing relative to a corresponding increase for more creditworthy borrowers (above median FICO score). These differential patterns are highly statistically significant and we also verify that they were not driven by the differences in mortgage balances or differences in mortgage rate reductions across these groups. In fact, after scaling new auto financing data by initial mortgage payments or the dollar amount of reductions due to HARP refinancing, we obtain similar relative differences in the cumulative patterns among these groups.¹⁹ As we will show in Section V, while high LTV and low FICO borrowers exhibit strongest responses to refinancing, they were also the group most adversely affected by competitive distortions embedded in HARP program design.

We conclude this section by investigating whether borrowers experiencing a larger reduction in interest rate show a larger increase in durable (auto) consumer spending. In particular, we estimate a specification where the dependent variable is a change in new auto financing after HARP refinancing (relative to its level prior to refinancing). We include a set of controls capturing borrower, loan, and regional characteristics as well as a variable, *Rate reduction*,

¹⁸ Note that if borrowers would increase their consumption regardless of their access to HARP refinancing we would expect to find no relative increase in auto financing among eligible loans relative to the control group after the program implementation since such effects would be differentiated out.

¹⁹ These findings are consistent with life-cycle household finance models (Zeldes 1989; Carroll and Kimball 1996; Carroll 1997) that predict a larger increase in consumption due to a positive income shock among borrowers with lower wealth levels. Similarly, we find that borrowers with below median credit score – those more likely to face credit constraints from the market -- increase their durable spending more after HARP refinancing relative to borrowers with above median credit scores.

which measures the extent of mortgage rate reduction due to HARP (in percentage points). Appendix A.2 shows these estimates. We find that borrowers experiencing a larger interest rate reduction due to HARP refinancing display a larger increase in durable spending. In particular, a one percentage point increase in rate reduction due to HARP is associated with a 0.12 to 0.2 percentage point increase in the quarterly probability of new auto financing and a net increase of about \$37 to \$55 in the quarterly new auto financing. We note that these estimates do not capture the base effect of refinancing under HARP (on average borrowers receive a reduction of around 140 basis points). Rather, they just reflect the relation between the extent of rate reduction and new auto financing among those that refinanced their loans.²⁰

IV.D Regional Analysis: Refinancing Activity, Consumer Spending, Foreclosures and House Prices

We end our analysis of program effects by using regional data to assess the regional outcome variables such as consumer spending, foreclosures, and house prices. We rely on zip code data, since we do not have more micro data for variables like consumer credit card spending on non-durables or house prices.

As we noted in Section III.B, our analysis exploits regional heterogeneity in the share of loans that are eligible for HARP. We obtain a measure of ex-ante exposure of a region to the program, *Eligible Share*, as the regional (zip code) share of conforming mortgages with LTV ratios greater than 80% prior to the program implementation date. As discussed earlier, these loans are broadly eligible for the program. We account for general trends in economic outcomes over the time period of the study by focusing on the *relative* change in the evolution of economic outcomes during the program period. Our identification assumption is that in the absence of the program, and controlling for a host of observable risk characteristics, the economic outcomes in regions (zip codes) with a larger share of eligible loans would have a similar evolution as those with a lower share, up to a constant difference.

We start with more than 10,000 zip codes for which we can compute the share of program eligible loans. Figure 3 shows the distribution of these zip codes in the data. There is a significant variation in the share of eligible loans across zip codes ranging from just few percent of all mortgages to more than 70% of loans being program eligible. We further confine our analysis to zip codes that have at least 250 mortgages and for which we have reliable data on outcome variables. This leaves us with a sample of about 3,400 zip codes.

We first verify that, consistent with our loan level evidence, zip codes with a larger share of HARP eligible loans are indeed more likely to experience more HARP refinances and consequently a larger mortgage interest rate reduction due to the program. We find that a one

²⁰ In unreported results, we address potential endogeneity of rate reduction by instrumenting for the extent of rate reduction with a level of market interest rate prevailing at the time of origination of legacy loan. This approach is similar to the one in Section V.C where we instrument legacy rate with the Treasury rate. The results are similar.

percentage point absolute increase in the ex-ante share of eligible loans for HARP is associated with an increase of about 0.24 percentage points in the fraction of loans that refinance under the program (see Appendix A.3). Moreover, the “first stage” results in Columns (1)-(2) of Table 3A show that there is a strong association between the share of loans that are ex ante eligible for HARP and the average interest rate reduction due to the program in a zip code. The effects are economically meaningful since we find that a one percentage point absolute increase in the ex-ante share of eligible loans for HARP is associated with a reduction of about 0.38 basis points in the average zip code mortgage interest rate.

We next turn to the association between the average mortgage interest rate reduction due to HARP and household spending on non-durables and durables. As Table 3B shows, consistent with our borrower-level results from Section IV.B, zip codes with larger rate reductions due to HARP experienced a relative increase in durable and non-durable consumer spending. In particular, the estimates in Table 3B suggest that a relative reduction of about 0.15% in mortgage interest rate payments due to HARP in a zip code is associated with a differential increase of about 0.13% in the credit card spending growth (Column 2) and an increase of about 0.2% in auto purchase growth (Column 4). Figure 4A and 4B plot the average growth in credit card spending and auto sales, respectively in more (above median *Eligible Share*) and less exposed (below median *Eligible Share*) zip codes to the program. Consistent with the results in Table 3B, these figures show that we observe a significant relative increase in spending growth in more exposed zip codes after the program implementation. Overall, these findings, similar to our micro evidence, suggest that following mortgage refinancing under the program, borrowers significantly increase their durable and non-durable consumption.²¹

We next investigate foreclosures and house price patterns across zip codes. The results in Table 3B indicate that regions more exposed to HARP experienced a relative improvement in the housing market. The estimates in Table 3B imply that a relative reduction of about 0.15% in average mortgage interest payments in a zip code is associated with a decline of about 0.01% in the foreclosure rate (Column 6) and an increase of 0.13% in the house price growth rate (Column 8). Figure 4C reinforces these findings by showing that the areas more exposed to the program experienced relative improvement in house prices after the program implementation.

Overall, these findings support the view that policies aimed at reducing mortgage rates can have a meaningful impact on consumer spending and house prices. This evidence is consistent with Agarwal et al. (2012), who find that mortgage modification programs, when used with sufficient intensity, may improve a range of economic outcomes. It is also consistent with Keys et al.

²¹ In unreported results we also find that the regions more exposed to HARP experienced a relative reduction in consumer debt delinquency rate (a reduction of 10 basis point in the average zip code mortgage rate due to HARP being associated with a 0.4% reduction in the quarterly consumer debt delinquency rate). This finding suggests that borrowers use some of the extra liquidity generated by mortgage rate refinancing to service and repay their debts.

(2014) and Di Maggio et al. (2014) who show that a sizable decline in mortgage payments on adjustable rate mortgages induces a significant increase in new financing of durable consumption and an overall improvement in household credit standing.

Taken together, our evidence in this section suggests that borrowers and regions exposed to the program experienced a sizable increase in consumption. However, as we already established in Section IV.B, a significant proportion of eligible borrowers did not participate in the program. In the next section we explore whether competitive frictions in the refinancing market inhibited program participation and the pass-through of lower interest rates to households, thereby adversely affecting the program impact on consumer spending among eligible borrowers.

V. Role of Competition in Inhibiting Program Effectiveness

V.A Descriptive Statistics

As noted in Section III.B, we start our analysis by constructing a simple measure that captures the difference in interest rates on mortgages refinanced through HARP and on conforming ones that are refinanced outside of the program. This measure allows us to quantify the extent of pass-through of lower interest rates to borrowers on HARP refinances *relative* to conforming ones with higher rates being associated with a lower pass-through. Notably, in the absence of competitive pressure, lenders may have incentive to charge borrowers higher rates on HARP refinances because such mortgages can generally be sold for more in the secondary market.²²

We define the *HARP-conforming refi spread* as the difference between the interest rates on a given HARP loan and the interest rate on a randomly assigned conforming mortgage in the data – i.e., those with LTV of 80% -- originated during the same calendar month, in the same location (MSA), and for a borrower with a similar FICO credit score at the time of refinancing.²³ As noted, the latter group represents conforming mortgage contracts of creditworthy borrowers carrying significant housing equity that could be refinanced outside of HARP, and for whom the refinancing process remained fairly unobstructed throughout the crisis period.

Importantly, in computing this spread we take advantage of the unique feature of the GSE loans, namely the fact that the credit risk of these loans to investors is fully insured by the GSEs. As we discussed in Section II, GSEs charge predetermined fees (g-fees) for insurance of credit risk and these fees are reflected in mortgage rates charged to the borrower. We use our precise data on actual g-fees charged on each loan and remove this fee from interest rates charged to borrowers on HARP and the benchmark conforming loans while computing the *HARP-conforming refi*

²² Note that as GSEs fully insure credit risk of conforming loans the consideration that higher rates may lead to more defaults and losses is relatively unimportant for the investors in the secondary market.

²³ The conforming loan has a borrower FICO credit score within 20 points of the corresponding HARP loan. To avoid concerns about interest rate term premiums, we restrict our attention to fixed-rate 30-year mortgages. Note that the vast majority of HARP refinances during our sample period consist of this mortgage type.

spread.²⁴ Consequently, the *HARP-conforming refi spread* should not reflect the relative difference in credit risk between HARP and conforming mortgages, which includes differences in credit scores and LTV ratios.

We focus on the time period 2009-2012, which broadly corresponds to the first three years of program implementation. We later extend this analysis through the first half of 2013, a period that featured changes in program rules as discussed in Section II.C. Notably, the vast majority of refinancing activities under HARP occurred until mid-2013 (more than 80%), and thus are covered by our analysis.

The first column of Table 4A confirms the existence of a sizeable mortgage rate differential between HARP and conforming loan refinances. Over the course of 2009-2012, the *HARP-conforming refi spread* (g-fee adjusted) averaged about 16 basis points suggesting that there might be support for market power driven pricing of HARP loans. This markup is substantial relative to mean interest rate savings on HARP refinances in our sample (about 140 basis points).

Next, we assess if the spread is related to HARP specific features, by constructing an alternative benchmark interest rate spread between conforming refinances in which existing servicers may also have some market power and purchase mortgages in which there is likely no such advantage. With refinancing transactions, an existing relationship might confer some competitive advantage to the existing servicer, whether through lower (re-) origination costs or less costly solicitation. In our analysis we compare conforming refinancing transactions with conforming purchase ones, both of which have an LTV of 80 – since the market for conforming LTV 80 mortgages – both refinancing and purchase – are very liquid and quite competitive.

Columns (3) and (5) in Table 4A show the resulting *conforming refi-purchase spread*, computed as the difference between average interest rates on conforming refinances and purchase transactions originated in the same month. The data confirm that market competitiveness kept a tight lid on whatever advantages the existing servicer might have had in the conforming refinancing market. In particular, during the period preceding HARP 2005-2009, the average *conforming refi-purchase spread* was virtually zero (-0.55 basis points in Column (5)). Notably, the spread remained below 3 basis points even during the crisis period (2009-2012) corresponding to the time of HARP implementation in our study (Column (3)). These results are consistent with the idea that the conforming refinancing market operated with a healthier level of lender competitiveness than the HARP market.

Table 4A provides further evidence on the central feature of HARP discussed at length in Section II.B, namely, the preferential treatment of existing servicers. Such asymmetry in

²⁴ As discussed in Section II, HARP pricing surcharges (LLPAs) took the form of upfront fees. However, these fees were typically converted into periodic interest rate charges. We use the actual conversion that was used to adjust the observed interest rates on HARP contracts.

treatment may lead to an unusually high share of new loans refinanced through the existing (or “same”) servicers under HARP. Consistent with this view, as shown in Column (1), among HARP transactions conducted during 2009-2012, 54% of loans were refinanced by the existing servicer. On the other hand, as shown in Column (3), during the same period only about 33% of regular conforming loans were refinanced with the same servicer. This number is even lower during the period preceding the crisis (2005-2009) when only about 1 in 5 conforming loans in our sample were refinanced with their existing lender (Column (5)).

Our discussion in Section II.B focused on the likely relationship between loan LTV and the degree of pricing power afforded to the existing servicer under HARP. Table 4B breaks down the key summary statistics of HARP refinances by four LTV categories: LTV ranging from 80 to 90, 90 to 105, 105 to 125 and greater than 125. We observe that the *HARP-conforming refi spread* increases substantially with LTV despite the fact that in computing this spread we removed adjustment by GSEs (g-fees) that accounts for differential mortgage credit risk due to higher LTV ratios. In particular, the spread for loans with LTV greater than 125 is nearly thrice (33.7 basis points) that for loans with LTV between 80 and 90. However, even for the loans closest to the regular conforming LTV levels (those in the 80-90 LTV category), the average spread persists at a non-negligible level of 11 basis points. These differences exist despite the fact that the borrower and loan characteristics in this subsample of 80-90 LTV loans (Column (1) in Table 4B) are quite similar to those for the subsample of 80 LTV conforming refinancing loans (Column (3) in Table 4A). Moreover, these differences exist even though we account for variation in interest rates due to differences in credit risk by removing g-fees in computing this spread. Overall, it is unlikely that the significant and positive *HARP-conforming refi spread* is driven by differences in credit risk between HARP and conforming loans.

Table 4B also reveals that the fraction of loans refinanced by the same servicer also substantially increases with mortgage LTV ratios: about 51% of loans with LTV ranging from 80-90% were refinanced by the same servicer compared with 78% of loans with LTV higher than 125%. Overall, these patterns are consistent with the notion that, relative to conforming refinances, HARP provided more power to lenders.

V.B Cross-Sectional Variation in HARP-Conforming Refi Spread

We build on the analysis in Table 4 by systematically evaluating the determinants of the *HARP-conforming refi spread* by estimating the loan-level specifications of the following form:

$$\left(r_{i,t}^{HARP} - r_{i,t}^{COMF} \right) = \alpha + \beta X_{i,t} + \varepsilon_i. \quad (1)$$

In these specifications the dependent variable, $(r_{i,t}^{HARP} - r_{i,t}^{COMF})$, is the *HARP-conforming refi spread* for the HARP loan refinanced at t by borrower i .²⁵ Since we want to assess how this spread is related to the observable characteristics of loans such as LTV, we include a vector of controls $X_{i,t}$ that consists of a set of borrower and loan level observable characteristics all measured at t , as well as any remaining differences in these characteristics between the HARP loan and a corresponding randomly assigned conforming loan.

As a first step, we compare the mean values of the spread across the four LTV categories, treating loans with LTVs between 80 and 90 as the omitted group. The results, shown in Column (1) of Table 5 confirm our earlier finding of uniformly positive fee-adjusted *HARP-conforming refi spreads* that are monotonically increasing in LTV. As we observe in Column (2), after accounting for characteristics such as borrower FICO scores, MSA fixed effects, year-quarter fixed effects for timing of refinancing transactions, and servicer fixed effects, we still find that *HARP-conforming refi spreads* is monotonically increasing in LTV. In particular, HARP loans with the highest LTV ($LTV > 125$) carry rates that are about 15.7 basis points higher than HARP loans in the excluded category ($80 < LTV \leq 90$), which amounts to more than a 140% increase in the rate spread relative to that group. Since we remove the exact g-fee adjustment that GSEs charge for insuring credit risk, it is unlikely that sizeable positive spread among HARP loans with high LTV ratios reflects greater default risk of these mortgages.

We next assess the robustness of the descriptive statistics related to refinancing by incumbent bank for loans financed under HARP relative to those in the conforming market in Columns (3) and (4) of Table 5. Consistent with our prior evidence, we find that HARP loans with higher LTV ratios are much more likely to be refinanced by the same servicer compared with conforming refinances that serve as an excluded category (33% of conforming loans are refinanced by the same servicer). In particular, the coefficient for $LTV > 125$ in Column (4) of Table 5 shows that, even after accounting for a variety of observable characteristics, HARP loans with LTV ratios greater than 125 are more than twice as likely to be refinanced by the same servicer compared with conforming refinances ($33\% + 39\% = 72\%$ versus 33%).

The evidence above suggests that the mortgage refinancing market under HARP may not have been fully competitive. It is natural to ask if these effects are prevalent uniformly across lenders in our sample. To the extent that our controls capture the relevant borrower, loan, and regional characteristics one would expect no significant difference in the HARP spread across the lenders if the refinancing market is fully competitive. Figure 5A plots the *HARP-conforming refi spread*

²⁵ Recall that this spread is computed as the difference between the interest rate (net of its g-fee) on the loan by borrower i that was refinanced under HARP at time t , $r_{i,t}^{HARP}$, and $r_{i,t}^{COMF}$, which is the monthly interest rate (net of its g-fee) of a randomly assigned conforming mortgage with LTV of 80%, originated during the same calendar month, in the same location (MSA), and to a borrower with a similar FICO credit score at the time of refinancing as the HARP loan of borrower i .

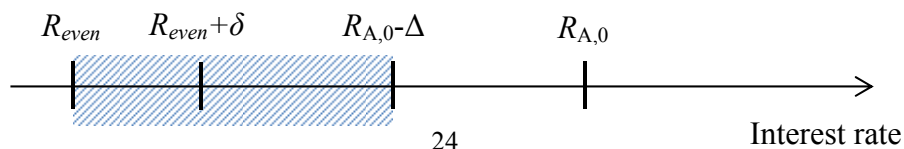
for different lenders in our sample. The coefficients (with 95% confidence intervals) correspond to lender fixed effects from the specification that corresponds to column (2) of Table 5.

As can be seen, controlling for other observables, there is a sizable and statistically significant variation in the *HARP-conforming refi spread* across the lenders, ranging from as low as -20 basis points to about 20 basis points. Moreover, as shown in Figure 5B we find a strong positive relation between the magnitude of the spread charged by a lender and the lender's size (proxied by log assets) with the correlation between the two series being 56%. Overall, our evidence is consistent with the notion that lenders with high market power extract surplus from borrowers for their own benefit.

V.C Variation in HARP-Conforming Refi Spread: Using Legacy Interest Rates

While potentially suggestive, there is a natural concern that our evidence in Section V.B may reflect other omitted factors. To address this concern, in our second set of tests, we exploit variation *within* HARP borrowers. In particular, we develop and test the conjecture that the legacy interest rate on the mortgage prior to refinancing is also systematically related to the degree of pass-through under HARP. Specifically, we expect that, in the presence of competitive frictions, between two HARP loans that are identical on every dimension except for the legacy interest rate, the loan with the higher legacy rate would obtain a higher post-refinancing rate.

To see this argument further, consider the simple example where two similar HARP eligible borrowers (A and B) want to refinance their loans. The interest rates on their original loans (i.e., the legacy interest rates) are $R_{A,0}$ and $R_{B,0}$, such that $R_{A,0} > R_{B,0}$. Given the assumed similarity of borrower's risk characteristics, the difference in interest rates faced by the borrowers could reflect time variation in benchmark *risk-free* rates pinned down by the timing of when these borrowers obtained their original loans. We further assume that a borrower needs to obtain a reduction of the interest rate of at least Δ per year in order to refinance a loan (see Agarwal, Driscoll, and Laibson (2013) for an optimal rule for Δ). An existing lender requires an interest rate of R_{even} to break even on the new mortgage, given the borrower's risk characteristics. Since by assumption, borrowers A and B have identical risk profiles at the time of refinancing, they face the same breakeven rate. In a perfectly competitive market – proxied in our benchmark analysis by the conforming refinancing market -- the same R_{even} would apply to all lenders. However, suppose a new lender must charge a rate premium, δ , to compensate for higher underwriting costs due to higher put back risk (Section II). In this setting, what interest rates could be obtained by A and B on their respective loans? The diagram below sketches out the case for borrower A.



The shaded area represents the region of rates that satisfy the participation constraints of both the borrower and the lender. Although the existing lender can potentially charge $R_{A,0} - \Delta$, the presence of the outside option offered by the new lender effectively constrains the maximum rate offered by the existing lender to be $R_{even} + \delta$. This results in the existing lender being able to charge an interest rate above the expected cost and extracting some surplus from the borrower.

In the case of borrower B, the existing loan has a lower interest rate, although it is still higher than the rate on the newly refinanced loan. In the diagram below, a new lender is unable to offer a rate $R_{even} + \delta$ as this rate does not satisfy the borrower's participation constraint. However, because $(R_{B,0} - \Delta) < (R_{even} + \delta)$, the existing lender can still realize a markup over its expected cost of funding the loan, albeit smaller than in the case of Borrower A. This difference in the interest rates obtained by A and B occurs despite the fact that these borrowers have the same risk characteristics.



The discussion above assumes that the current lender (servicer) knows the borrower's participation constraint as well as the costs of other lenders. In reality the incumbent lender may be imperfectly informed about both the borrower's participation constraint as well as the refinancing cost structure of its competition (i.e., the incumbent lender may only know distributions of these factors). In such a scenario, the decision of the incumbent lender regarding the rate to be offered will reflect the trade-off between the expected profit in the case that the offer is accepted versus the risk of losing the borrower either due to violating the borrower participation constraint (offering insufficient reduction in rate) or due to other lenders being able to offer a lower rate (if their refinancing cost proves to be low enough).²⁶

To investigate the above conjecture of the positive relationship between the legacy interest rate and the interest rate on HARP refinances we estimate the following loan-level specifications:

²⁶ It is not difficult to construct a simple market equilibrium model featuring such a tradeoff. In such an equilibrium, consistent with the above discussion, the incumbent lender will still offer higher refinancing rates to borrowers with higher legacy rates and to borrowers for whom the expected cost of refinancing by other lenders is larger (and hence there is less competition). Moreover, fewer borrowers will end up refinancing their loans relative to the case when the incumbent servicer would offer its zero profit rates. These borrowers would be the ones with required reduction in rates higher than the one offered by the incumbent lender but lower than what is implied by a break-even rate. In addition, some loans will also be refinanced by other non-incumbent lenders (i.e., mortgages they can refinance at relatively low refinancing costs).

$$(r_{i,t}^{HARP} - r_{i,t}^{COMF}) = \alpha + \beta X_{i,t} + \gamma \times r_i^{Previous} + \varepsilon_i. \quad (2)$$

As in specification (1) the dependent variable, $(r_{i,t}^{HARP} - r_{i,t}^{COMF})$, is the *HARP-conforming refi spread* of the loan by borrower i refinanced under HARP at time t and $X_{i,t}$ is a vector of observable borrower and loan characteristics associated with the loan. Because we are interested in assessing the relation between this spread and the legacy interest rate, we include an additional control variable, $r_i^{Previous}$, which reflects the interest rate on the loan before HARP refinancing by borrower i . The coefficient γ measures the association between the loan *HARP-conforming refi spread* and the legacy rate.

Table 6A shows the relation between the *HARP-conforming refi spread* and the legacy interest rate. The panel preserves the setup of Table 5, while adding the mortgage rate prior to refinancing as a control variable. Column (1) shows that borrowers with higher legacy interest rates indeed face higher post-refinancing rates. This inference persists in Columns (2) through (4), with the magnitude of the estimated effect even strengthening once we control for a rich set of risk characteristics. Overall, we estimate a post-refinancing markup of about 9.6 basis points per 100 basis points in the higher legacy rate, holding the key borrower and loan characteristics fixed. This effect implies that the 100 basis points higher legacy rate is associated with a more than 50% increase in the markup relative to its mean level and about a 7% reduction in interest rate savings compared with average savings on HARP refinances. It is also worth noting that borrowers with higher LTVs continue to suffer from higher *HARP-conforming refi spreads* even when conditioning on the legacy rate.

It is possible that, despite accounting for variety of a borrower, loan, and regional characteristics, our results may still be driven by some unobservable factors correlated with higher legacy rates. To address this issue we rely on Section II.A where we discussed that mortgage pricing is tightly linked to the benchmark Treasury rates. In particular, we instrument the legacy interest rate on a mortgage with the 10-year U.S. Treasury yield prevailing at the time of origination of the legacy mortgage to obtain variation in the borrower's legacy rate that is exogenous to individual and regional characteristics.

Table 6B verifies the relevance of this instrument through a regression of the legacy mortgage rate on the 10-year Treasury rate in the month of origination. As can be seen there is indeed a strong association – a 1% increase in the 10-year Treasury rate is associated with a highly statistically significant 0.61% increase in the mortgage rate.

Column (2) introduces other controls that contain categories for LTV range, FICO, FICO squared, MSA fixed effects, servicer fixed effects and, importantly, for the quarter-year fixed effects corresponding to the date of origination of the legacy loan. Consequently, in the specification in Column (2) of Table 6A we effectively exploit *within-quarter* variation in the

relationship between Treasury rates and legacy mortgage rates. As we observe from Column (2) of Table 6B, in this much stringent setting, we still find that the 10-year Treasury is strongly related to the mortgage legacy rate (with a 1% increase in the 10-year Treasury rate being associated with a highly statistically significant 0.55% increase in the mortgage rate). Moreover, the high R^2 values of 0.45 in the baseline model (Column 1) and 0.50 in the full model (Column 2) indicates that mortgage rates indeed track the “risk free” rate quite closely.

In the second stage of our analysis, we investigate the relationship between the *HARP-conforming refi spread* and the predicted legacy mortgage rate from the first stage regression. Columns (3) and (4) present results where we instrument for the legacy rate using the specifications in Columns (1) and (2). Focusing on the full specification in Column (4), we see that the estimated coefficient on the instrumented rate (10.91) is similar in magnitude to the estimated coefficient on the observed rate (9.61) obtained through the OLS model of Table 5A. Overall, this analysis reinforces our earlier findings that unobserved borrower or regional level variation are not likely impacting the strong relationship between the *HARP-conforming refi spread* and the legacy rate.

V.D Evidence from “difference in difference” around the program change

In our final key test, we establish a *direct* connection between changes in the degree of competition in refinancing market and the program interest and take-out rates. We take advantage of the change in the program rules regarding the assumed legal risk of servicers with respect to loans they were refinancing. In particular, as discussed in Section II.C, from January 2013 onward the program rules were changed significantly, limiting the legal risk of a lender who refinances a loan originated by another lender. Accordingly, we expect this policy change to result in a more competitive HARP market and thus possibly lead to a reduction in the *HARP-conforming refi spread* and an increased program participation rate.

To investigate this we estimate the loan-level specifications of the following form:

$$(r_{i,t}^{HARP} - r_{i,t}^{COMF}) = \alpha + \beta X_{i,t} + \delta \times (2013 \text{ HARP Refi})_i + \varepsilon_i. \quad (3)$$

We follow the same structure as specification (2) with a few key changes. First, we focus on a new and extended time period, mid 2012 through the end of our sample period (mid-2013). Second, we add a dummy variable, *2013 HARP Refi*, which equals one for loans refinanced under the HARP program in the first half of 2013 and zero for those refinanced in 2012. As before, the vector of the control variables X captures the borrower and loan characteristics measured at the time of HARP refinancing as well as the legacy interest rate on the loan. The key coefficient of interest, δ , measures the change in the *HARP-conforming refi spread* around the program change in January 2013.

Before doing the formal analysis we explore how the two groups of loans in the difference-in-difference analysis compare on various observables before the program change. First, we explore the pre-program change evolution of FICO and LTV of borrowers in HARP refinances relative to conforming refinances (see Appendix A.4). We find that the difference in LTV ratios across borrowers in the two groups remains constant in the pre-program period. In particular, the average LTV ratio for HARP refinances consistently remains about 30% above that for conforming refinances, with little relative change over time (recall that, by construction, conforming refinances have LTV ratios equal to 80%). Likewise, we do not observe any differential change in the borrower credit scores between the two groups in the pre-program change period. Thus, the two groups of loans seem well situated for us to conduct our analysis.

Table 7 presents the results of our formal analysis.²⁷ As can be observed across Column (1) and (2), δ is negative and significant, implying that there is a substantial reduction in the *HARP-conforming refi spread* after the program change. A borrower who refinances under HARP during the first half of 2013 enjoys, on average, a discount of around a 9.03 basis points relative to an otherwise similar borrower who secured a HARP refinance during the second half of 2012. Moreover, the estimated size of this effect is stable, ranging from -8.11 to -9.03 basis points, across specifications that account for a plethora of borrower, loan, and regional level as well as servicer fixed effects.

To confirm that the change in the spread occurs precisely around the program change, we explore the timing of the effects documented in Table 7. In particular, we replace the *2013 HARP Refi* dummy in specification (3) with monthly dummies corresponding to the month in which a given loan was refinanced under HARP (the excluded category is loans made in June 2012). This specification allows us to investigate the monthly changes in the *HARP-conforming refi spread* around the program change in January 2013. We present the results in Figure 6A. Two facts are worth discussing. First, the *HARP-conforming refi spread* remains at a stable level in 2012. Note that what we have plotted are demeaned spreads. The average spread during this period is about 27 basis points. Second, and more important, there is a sharp reduction in the spread by about 10 basis points precisely in January 2013 (more than 30% reduction in *HARP-conforming refi spread*). This difference persists until the end of our sample period.

Finally, we investigate the impact of the program change on the refinancing rate of eligible borrowers. For that purpose, in Column (3) and (4) of Table 7, we estimate a similar specification to (3) but where now the dependent variable takes the value of 1 if the loan refinances in a given month and is zero otherwise. The excluded category is loans that are eligible for conforming refinances (loans with current LTV as of June 2012 less than 80). The

²⁷ Note that the specification above already removes g-fees that accounts for borrower credit risk. Moreover, since our dependent variable is measured relative to conforming refinances, any movements in the refinancing market that also affect conforming refinances are differenced out in our specifications.

key coefficient of interest is the $2013 \times HARP$, which captures the change in the refinancing rate of HARP eligible loans relative to conforming loans. Column (4) of Table 7 shows that, after the program rule change, we observe a 0.12 percentage point increase in the refinancing rate among eligible loans (about a 6% relative increase). Figure 6B verifies that the timing of this effect coincides with the change in the program rules. We also verify that almost all of this increase can be accounted for by an increase in the HARP refinances among eligible loans following the change in the program rules.

Overall, the evidence in this section strongly supports the view that the an increase in competition between servicers resulted in a meaningful decline in interest rates on *HARP* refinances (intensive margin) and significant increase in the HARP refinancing rate (extensive margin). We next assess the market wide effects of the competitive frictions.

V.E Assessing Market Wide Effects of the Competitive Frictions

Our evidence presented in Sections V.A-V.D suggests that the limited competition had meaningfully reduced the pass-through of lower interest rates to consumers. The estimates we obtain are substantial. We find that, on the intensive margin, borrowers would receive a 10 to 20 percentage points higher reduction in mortgage payments if HARP refinances were priced as competitively as conforming refinances (after accounting for g-fees). Moreover, on the extensive margin -- after applying the estimates from Section V.D to the stock of all eligible loans as of the program start date -- the refinancing rate among eligible borrowers would be 9.6 percentage points larger by December 2012 if the HARP-conforming spread was zero. In addition, this effect on take up rates due to elimination of the HARP interest rate markup is about twice as large (19.8 percentage points) among eligible borrowers with high LTV ratios ($LTV > 125$).²⁸

Notably, this stronger extensive margin effect of markups could be particularly detrimental for consumption response obtained from the program. The reason is that, as we showed in Section IV.C, these highly indebted borrowers display (conditional on refinancing), a larger increase in spending from savings they receive from refinancing. Thus, the competitive frictions operating through both extensive and intensive margin, may have meaningfully reduced the program impact on consumer spending among eligible borrowers (especially in its first few years).

To shed further light on the plausibility of these estimates we perform two further tests. First, we focus on a representative sample of GSE loans (more than a million) that were eligible for the

²⁸ In computing these effects we note that the estimates in Table 7 imply that a decline of about 1 basis point in the HARP-conforming refi spread is associated with a 0.013% increase in the monthly refinancing rate among eligible borrowers. Assuming that this estimate is applicable over the initial 45 months of the program (until December 2012) and taking into account that average HARP-confirming refi was about 16 basis points, implies that reducing this spread to zero would increase the refinancing rate by about 9.6%. As the spread for loans with $LTV > 125$ is about 33 basis points (Table 4B) performing the same computation for this subset implies that reducing the spread to zero for these loans would increase the refinancing rate by about 20%.

program as of its implementation date in March 2009. Within this sample we perform a simple quantitative assessment of the impact of the estimated HARP markups. For that purpose, we assume that borrowers need to obtain an interest rate reduction of at least 100 basis points to refinance their loans. This simple assumption is motivated by various factors, such as borrowers' costs in refinancing their loans and the option value of waiting for further declines in interest rates (see Agarwal et al. 2013). Performing this simple exercise we find that the refinancing rate among eligible borrowers would be between 10% (for lower LTV loans) and 20% (for high LTV loans) higher in the absence of HARP markups (see Appendix A.5). Notably the magnitude of these effects is similar to the one implied by extensive margin estimates from Section V.D.

Second, we explore whether the program was less effective in regions with a larger concentration of servicers with higher *HARP-conforming refi spreads* – i.e., those that charge borrowers higher rates on loans refinanced under the program. Recall that our analysis in Section V.B indicates a significant servicer level variation in the *HARP-conforming refi spread* that is not accounted for by borrower, loan, and regional level characteristics. To conduct this analysis we classify the top quartile of servicers with the highest estimated fixed effects displayed in Figure 5A. These high cost servicers account for more than 60% of loans in our data. Consequently, we compute the zip code level *Eligible and High Cost Servicer Share* as a fraction of loans in a zip code that both are program eligible and are serviced by high cost lenders.

We find that the areas where a larger share of eligible loans is handled by high cost servicers do experience significantly lower rate reduction due to HARP. In particular, we note that our estimates (see Appendix A.3) suggest that on average the pass-through of lower interest rates to consumer through program refinances would be about 35% lower in a zip code where all eligible loans are serviced by high cost servicers compared with a zip code where all eligible loans are serviced by low cost servicers – after controlling for the share of HARP eligible borrowers in a zip code. Notably, both the intensive and extensive margin play an important role in explaining this effect, since we also find that fewer HARP eligible borrowers (about 17% less) would refinance their loans in the areas where all eligible loans were handled by high cost servicers.

VI. Conclusion

Our findings suggest that significant number of eligible borrowers did not take advantage of the program. While certainly the borrower specific factors or other institutional frictions (e.g., like servicer capacity constraints) may help account for this muted response, our paper finds that limits to competition in refinancing market can also help explain part of this shortfall. Moreover, by adversely altering refinancing activity – the take up rate as well as the pass through -- competitive frictions may have significantly reduced the program effect on consumption of eligible households, especially indebted households who generally have a higher propensity to

spend from additional liquidity (see Mian, Rao and Sufi 2013).²⁹ Thus, our evidence suggests that provisions limiting the competitive advantage of incumbent banks with respect to their existing borrowers should be an active consideration when designing stabilization policies such as HARP. This insight would also apply to other policies whose implementation depends on the intermediaries that may have some incumbency advantage with respect to targeted agents.

Our results also speak to HARP's impact on redistribution and the overall consumption response in the economy. As Beraja, Fuster, Hurst and Vavra (2015) note, prior to HARP, refinancing was only available to more creditworthy borrowers with lower LTV ratios, which could exacerbate regional economic heterogeneity. Although we cannot quantify the overall GE effects of the program that might include the impact of the program on profits of mortgage investors and their consumption, our results suggest that less creditworthy and more indebted borrowers significantly increased their spending following refinancing. To the extent that such borrowers have the largest marginal propensity to consume, allowing them to refinance under the program could increase overall consumption and alleviate the regional dispersion in economic outcomes (see Auclert 2015 for redistributive effects of lower rates for aggregate consumption).

Our findings also have implications for the debate regarding optimal mortgage contract design (see Eberly and Krishnamurthy 2014), highlighting potential benefits of adjustable rate mortgages (ARMs). In particular, by automatically reducing mortgage rates when market rates are low, ARMs can help alleviate frictions due to the limited competition in the loan refinancing market. Moreover, as ARMs can allow quick refinancing of borrowers regardless of the extent of their housing equity or creditworthiness, such contracts may reduce the need for large-scale refinancing programs like HARP, which, as we show, can face implementation hurdles. There are also additional benefits of ARMs that might be useful to discuss in our context.³⁰ Of course, such benefits need to be carefully weighed against the potential adverse costs of ARMs. We leave this issue for further research.

Finally, we note that our analysis using conforming market pricing as a benchmark does not imply that the conforming refinancing market was fully competitive. In fact, recent evidence by Scharfstein and Sunderam (2014) suggests that there are also significant frictions limiting competition in the regular conforming refinancing market. Their findings suggest that our

²⁹ Because these indebted households face higher default risk and have larger propensity to spend from additional liquidity (see Keys et al 2014), they are the key target of stabilization policies such as HARP.

³⁰ By automatically reducing mortgage rates, ARMs may help alleviate the barriers to loan renegotiation due to securitization (Piskorski et al. 2010; Agarwal et al. 2011) and lender concerns regarding borrowers' strategic behavior (Mayer et al. 2014). In addition, as ARM contracts do not require the active participation of borrowers in the process of rate reduction, they can help alleviate the adverse effects of borrower inertia and inattention on mortgage refinancing (see Keys, Pope, and Pope 2014 and Andersen et al. 2014 for the recent evidence on these factors). See also Piskorski and Tchisty (2010) who highlight the benefits of ARMs for less creditworthy borrowers in an optimal dynamic contracting framework with costly default.

estimates are, if anything, a lower bound on the overall effects of importance of competition for program implementation.

References

- Aaronson, Daniel, Sumit Agarwal, and Eric French, 2012, The Spending and Debt Response to Minimum Wage Hikes, *American Economic Review* 102, 3111-39.
- Agarwal, Sumit, Gene Amromin, Itzhak Ben-David, Souphala Chomsisengphet, Tomasz Piskorski, and Amit Seru, 2012, Policy Intervention in Debt Renegotiation: Evidence from Home Affordable Modification Program, NBER Working Paper 18311.
- Agarwal, Sumit, John Driscoll, and David Laibson, 2013, Optimal Mortgage Refinancing: A Closed Form Solution, *Journal of Money, Credit, and Banking* 45, 591-622.
- Agarwal, Sumit, Richard J. Rosen, and Vincent Yao, 2014, Why Do Borrowers Make Mortgage Refinancing Mistakes?, working paper, Federal Reserve Bank of Chicago.
- Agarwal, Sumit, Chunlin Liu, and Nicholas Souleles, 2007, The Reaction of Consumption and Debt to Tax Rebates: Evidence from the Consumer Credit Data, *Journal of Political Economy* 115, 986-1019.
- Agarwal, Sumit, and Wenlan Qian, 2014, Consumption and Debt Response to Unanticipated Income Shock: Evidence from a Natural Experiment in Singapore, *American Economic Review* 104: 4205-30.
- Agarwal, Sumit, Souphala Chomsisengphet, Neil Mahoney, and Johannes Strobel, 2015, Do Banks Pass Through Credit Expansions? The Marginal Profitability of Consumer Lending during the Great Recession, working paper.
- Amromin, Gene, Marco Di Maggio, and Amir Kermani, 2015, Real Effects of HARP, working paper.
- Andersen, Steffen, John Y. Campbell, Kasper Meisner Nielsen, and Tarun Ramadorai, 2014, Inattention and Inertia in Household Finance: Evidence from the Danish Mortgage Market, working paper.
- Auclert, Adrien, 2015, Monetary Policy and the Redistribution Channel, working paper.
- Beraja, Martin, Andreas Fuster, Erik Hurst, Joseph Vavra, 2015, Regional Heterogeneity and Monetary Policy, working paper.
- Browning, Martin, and M. Dolores Collado, 2001, The Response of Expenditures to Anticipated Income Changes: Panel Data Estimates, *American Economic Review* 91, 681-92.
- Campbell, John Y., and João Cocco, 2003, Household Risk Management and Optimal Mortgage Choice, *Quarterly Journal of Economics* 118: 1449–1494.
- Carroll, Chris. D, and Miles S. Kimball, 1996, On the Concavity of the Consumption Function, *Econometrica* 64, 981-992.
- Carroll, Chris D., 1997, Buffer-Stock Saving and the Life Cycle/Permanent Income Hypothesis, *Quarterly Journal of Economics* 112, 1-54.

- Charles Kevin K., Erik Hurst, Matthew J. Notowidigdo, 2013, Manufacturing Decline, Housing Booms, and Non-Employment, NBER Working Paper No. 18949.
- Chen, Hui, Michael Michaux, and Nick Roussanov, 2014, Houses as ATMs? Mortgage Refinancing and Macroeconomic Uncertainty, working paper.
- Di Maggio, Marco, Amir Kermani, and Rodney Ramcharan, 2014, Monetary Pass-Through: Household Consumption and Voluntary Deleveraging, Working Paper.
- Eberly, Janice, and Arvind Krishnamurthy, 2014, Efficient Credit Policies in a Housing Crisis, Fall 2014 Brookings Panel on Economic Activity.
- Favilukis, Jack, Sydney Ludvigson, and Stijn Van Nieuwerburgh, 2013, The Macroeconomic Effects of Housing Wealth, Housing Finance, and Limited Risk Sharing in General Equilibrium, working paper.
- Gelman, Michael, Shachar Kariv, Matthew D. Shapiro, Dan Silverman, and Steven Tadelis. 2014. "Harnessing Naturally Occurring Data to Measure Income and Spending Accurately in Real Time." *Science* 345(6193), 212-215
- Gross, David B., and Nicholas S. Souleles, 2002. Do Liquidity Constraints and Interest Rates Matter for Consumer Behavior? Evidence from Credit Card Data, *Quarterly Journal of Economics* 117, 149-185.
- Hubbard Glenn, and Christopher Mayer, 2009, The Mortgage Market Meltdown and House Prices, *The B.E. Journal of Economic Analysis & Policy* 9, Issue 3 (Symposium), Article 8.
- Hsu, Joanne W., David A. Matsa, and Brian T. Melzer, 2014, Positive Externalities of Social Insurance: Unemployment Insurance and Consumer Credit, NBER Working Paper 20353.
- Hurst, Erik and Frank Stafford, 2004, Home is Where the Equity is: Mortgage Refinancing and Household Consumption, *Journal of Money Credit and Banking* 36, 985-1014.
- Johnson David S., Jonathan A. Parker., Nicholas S. Souleles, 2006. Household Expenditure and the Income Tax Rebates of 2001. *American Economic Review* 96: 1589-1610.
- Jappelli, Tullio, Jorn-Steffen Pischke, and Nicholas S. Souleles, 1998, Testing for Liquidity Constraints in Euler Equations with Complementary Data Sources, *Review of Economics and Statistics* 80, 251-262
- Johnson, Eric, Stephan Meier, and Olivier Toubia, 2015, Leaving Money on the Kitchen Table: Exploring sluggish mortgage refinancing using administrative data, surveys, and field experiments, working paper.
- Keys, Benjamin J., Tanmoy Mukherjee, Amit Seru, and Vikrant Vig, 2010, Did Securitization Lead to Lax Screening: Evidence from Subprime Loans, *Quarterly Journal of Economics* 125, 307-362.
- Keys, Benjamin J., Tomasz Piskorski, Amit Seru, and Vincent Yao, 2014, Mortgage Rates, Household Balance Sheets, and Real Economy, NBER Working Paper No. 20561.
- Keys, Benjamin J., Devin G. Pope, and Jaren C. Pope, 2014, Failure to Refinance, NBER Working Paper No. 20401.
- Koijen, Ralph, Otto van Hemert, and Stijn Van Nieuwerburgh, 2009, Mortgage Timing, *Journal of Financial Economics* 93, 292-324.

- Mayer, Christopher, Karen Pence, and Shane M. Sherlund. 2009, The Rise in Mortgage Defaults, *Journal of Economic Perspectives* 23, 27-50
- Mayer, Christopher, Edward Morrison, Tomasz Piskorski, and Arpit Gupta, 2014, Mortgage Modification and Strategic Behavior: Evidence from a Legal Settlement with Countrywide, *American Economic Review* 104, 2830-285.
- Melzer, Brian, 2014, Mortgage Debt Overhang: Reduced Investment by Homeowners at Risk of Default, *Journal of Finance*, forthcoming.
- Mian, Atif, and Amir Sufi, 2012, The Effects of Fiscal Stimulus: Evidence from the 2009 'Cash for Clunkers' Program, *Quarterly Journal of Economics* 127: 1107-1142.
- Mian, Atif, Kamalesh Rao, and Amir Sufi, 2013, Household Balance Sheets, Consumption, and the Economic Slump, forthcoming in the *Quarterly Journal of Economics*.
- Neumark, D., Sharpe, S., 1992. Market Structure and the Nature of Price Rigidity: Evidence from the Market for Consumer Deposits, *Quarterly Journal of Economics* 107, 657-80.
- Parker, Jonathan A. 1999. "The Reaction of Household Consumption to Predictable Changes in Social Security Taxes." *American Economic Review* 89: 959-973
- Parker, Jonathan A., Nicholas S. Souleles, David S. Johnson, and Robert McClelland. 2013, Consumer Spending and the Economic Stimulus Payments of 2008, *American Economic Review* 103, 2530–2553.
- Piskorski, Tomasz, and Alexei Tchisty, 2010, Optimal Mortgage Design, *Review of Financial Studies* 23, 3098-3140.
- Rotemberg, Julio J, and Garth Saloner, 1987, The Relative Rigidity of Monopoly Pricing, *American Economic Review* 7, 917-26.
- Scharfstein, David, and Adi Sunderam, 2014, Market Power in Mortgage Lending and the Transmission of Monetary Policy, Working paper.
- Stephens, Melvin Jr, 2008, The Consumption Response to Predictable Changes in Discretionary Income: Evidence from the Repayment of Vehicle Loans, *Review of Economics and Statistics* 90, 241-52.
- Souleles, Nicholas S., 1999, Response of Household Consumption to Income Tax Refunds, *American Economic Review* 89, 947-958.
- Shapiro, Matthew D., and Joel Slemrod, 1995, *Consumer Response to the Timing of Income: Evidence from a Change in Tax Withholding*, *American Economic Review*, 85: 274-283.
- Stroebel Johannes, and Joseph Vavra, 2014, House Prices, Local Demand, and Retail Prices, NBER Working Paper 20710.
- Shapiro, M.D., and Slemrod, J., 2003, "Consumer Response to Tax Rebates," *American Economic Review*, 93, 381-396.
- Zeldes, Stephen P., 1989, Optimal Consumption with Stochastic Income: Deviations from Certainty Equivalence, *Quarterly Journal of Economics* 107, 275-298.

Table 1:
Summary Statistics for HARP and Non-HARP Eligible Loans

This table presents summary statistics of key variables in the pre-HARP period (2008: Q2 to 2009: Q1) in the treatment and control groups. The treatment group consists of GSE 30-year fixed-rate mortgages that have current LTV ratios greater than 80 as of March 2008 (one year prior to the program). The control group consists of a sample of full documentation prime non-GSE 30-year fixed-rate mortgages (privately securitized) that have current LTV ratios greater than 80 as of March 2008. Since, these loans were not sold to GSEs they are not eligible for HARP. *Data Source:* Large secondary-market participant and BlackBox Logic.

	Treatment (HARP Eligible)		Control (Non-HARP Eligible)	
	Mean (1)	S.D (2)	Mean (3)	S.D (4)
LTV	95.5	5.2	93.6	6.3
FICO	712.7	46.4	728.4	33.7
Interest Rate	6.60	0.64	6.84	0.66
Balance	183,614	91,718	190,525	141,104
Number of Loans	1,105,732		80,511	

Table 2:

Borrower-Level Evidence: HARP, Refinancing Rate, Mortgage Payments, and Durable Spending (New Auto Financing)

Panel A of this table presents OLS estimates from regressions that track whether or not a loan refinances around the program implementation (Q2 2008 till Q4 2012). The dependent variable takes the value of one in the quarter a given loan refinances and is zero otherwise (the refinanced loans exit the estimation sample). The variable, *HARP Eligible*, takes the value of one if a loan belongs to the treatment group as defined in Table 1 and is zero otherwise. The variable, *After Q1 2009*, takes the value of one for the quarters after Q1 2009 and is zero otherwise. Column (1) presents the basic specification with no other controls but a constant term, *HARP Eligible* dummy, *After Q1 2009* dummy, and the interaction term of these two variables (*HARP Eligible*) × *After Q1 2009*). Column (2) adds borrower controls that include variables such as FICO credit score, LTV, interest rates. Column (3) adds the fixed effects for the location (MSA) of the property (*MSA FEs*). Column (4) clusters standard errors at the MSA level. The estimation sample consists of a matched set of treatment and control loans (as defined in Table 1). The estimates in Column (1)-(4) of Panel A are in percentage terms. Panel B presents OLS estimates from regression where the dependent variable is the current interest (Column 1 and 2), the quarterly mortgage interest rate payments (Column 3 and 4), the variable that takes value of one if the new auto financing takes place in a given quarter and is zero otherwise (Column 5 and 6), and the net amount of new auto financing in dollars (Column 7 and 8) (the difference between the new and prior auto debt in the quarter in which new financing takes place). The variable, *After HARP*, takes value of one in the quarters after HARP refinancing rate and is zero otherwise. In Column (2), (4), (6), (8) of Panel B the standard errors are clustered at MSA level and the estimates in Columns (1)-(2) and (5)-(6) are expressed in percentage terms. The *Year-Quarter FEs* correspond to the quarter-year fixed effects for the date of HARP refinancing. Standard errors are included in the parentheses.

Panel A: HARP and the refinancing rate				
	(1)	(2)	(3)	(4)
(HARP Eligible) × After Q1 2009	1.73 (0.05)	1.35 (0.07)	1.37 (0.07)	1.37 (0.11)
Borrower Controls	No	Yes	Yes	Yes
MSA FEs	No	No	Yes	Yes
Observations	4,118,192	4,118,192	4,118,192	4,118,192
Adjusted R-Square	0.001	0.003	0.01	0.01

Panel B: Mortgage payments and durable spending (new auto financing) after HARP refinancing								
	Mortgage rate		Mortgage payments		Probability of new auto financing		Net amount of new auto financing	
	(1)	(2)	(3)	(4)	(5)	(6)	(7)	(8)
After HARP	-1.40 (0.00)	-1.42 (0.07)	-884.11 (0.24)	-884.67 (37.93)	0.78 (0.03)	0.84 (0.04)	185.08 (5.63)	198.88 (9.38)
Borrower Controls	No	Yes	No	Yes	No	Yes	No	Yes
Year-Quarter FEs	No	Yes	No	Yes	No	Yes	No	Yes
MSA FEs	No	Yes	No	Yes	No	Yes	No	Yes
Observations	4,125,726	4,125,726	4,125,726	4,125,726	4,125,726	4,125,726	4,125,726	4,125,726
Adjusted R-Square	0.617	0.868	0.515	0.667	0.001	0.002	0.001	0.002

Table 3:**Regional Evidence: Consumer Spending, Foreclosures, and House Prices and Zip Code Exposure to HARP**

This table examines the relation between regional (zip code level) consumer spending, foreclosures, and house prices and the average mortgage rate reduction in a zip code due to HARP (in basis points) instrumented with the pre-program share of loans in a zip code that are eligible for HARP. The pre-program program eligible share, *Eligible Share*, is the fraction of outstanding first-lien mortgage loans in a zip code that are conforming and have current LTV ratios greater than 80 prior to the program implementation. Column (1) presents the first stage specification without controls, in which the average mortgage interest rate reduction due to HARP, *Rate Reduction due to HARP*, is instrumented with the share of program eligible loans. Column (2) repeats the first stage, but includes a series of controls including the zip code average FICO credit score, LTV ratio, interest rate on mortgages along with the average zip code house price growth over the prior five years and state fixed effects. Panel B shows the corresponding second stage estimates results for the change in the quarterly credit card spending growth rate (Column 1 and 2), the auto purchase growth rate (Column 3 and 4), the foreclosure rate (Column 5 and 6), and the house price growth rate (Column 7 and 8), all computed as the average of the respective value during the program less its pre-program level. The analysis is based on a sample of 3,443 zip codes. The estimation period is 2008:Q1 through 2013:Q2. Standard errors are included in parentheses.

Panel A: Average mortgage interest rate reduction due to HARP in a zip code (*First Stage*)

	(1)	(2)
Eligible Share	31.4 (0.007)	38.0 (0.010)
Zip Code Controls	No	Yes
State FEs	No	Yes
Adj. R-squared	0.47	0.71

Panel B: Instrumented “Interest rate reduction due to HARP” and consumer spending (credit card and auto), foreclosures, and house prices (*Second Stage*)

	Credit card spending		Auto purchase growth		Foreclosure rate		House price growth	
	(1)	(2)	(3)	(4)	(5)	(6)	(7)	(8)
Rate Reduction due to HARP	0.119 (0.028)	0.129 (0.036)	0.394 (0.019)	0.201 (0.021)	-0.010 (0.002)	-0.025 (0.002)	0.353 (0.015)	0.134 (0.008)
Zip Code Controls	No	Yes	No	Yes	No	Yes	No	Yes
State FEs	No	Yes	No	Yes	No	Yes	No	Yes
Adj. R-squared	0.01	0.03	0.06	0.42	0.01	0.64	0.07	0.83

Table 4:
Summary Statistics for HARP and Conforming Refinances

This table presents the summary statistics for mortgage loans that were refinanced under the Home Affordable Refinance Program (HARP) during 2009-2012 period (Column 1 and 2) alongside with conforming refinances originated during 2009-2012 period (Column 3 and 4) and 2005-2009 period (Column 5 and 6). The sample consists of more than 800,000 of HARP and conforming refinances. The variable *HARP-conforming refi spread* (in basis points) is computed as the difference between the interest rate on a given HARP refinanced loan and the mean interest rate for conforming refinances with a loan-to-value ratio (LTV) equal to 80 percent originated in the same month. This spread is guarantee-fee adjusted by subtracting guarantee fees from the HARP and conforming refinance rates before computing the spread. The variable *Conforming refi-purchase spread* (in basis points) is computed as the difference between the interest rate on a given conforming refinanced loan and the mean interest rate for purchase loans with an 80 percent LTV ratio originated in the same month. The *Same servicer refi* dummy takes a value of one if the servicer is the same before and after a refinancing, otherwise it is zero. The table also present summary statistics for other key variables, including the LTV ratio (in percentage terms) at the time of refinancing, FICO credit score of the borrower at the time of refinancing, interest rate (in percentage terms) on a loan before refinancing (*Previous rate*), interest rate on a loan after refinancing (*Rate after refinancing*), and balance of a loan at the time of refinancing (in thousands of dollars). Panel A presents the statistics of the full sample, while Panel B presents the mean values for HARP refinances separated in the four LTV ranges (as of the time of refinancing).

Panel A: HARP and conforming refinances (All Sample)

	HARP refinances 2009-2012		Conforming refinances 2009-2012		Conforming refinances 2005-2009	
	Mean (1)	S.D (2)	Mean (3)	S.D (4)	Mean (5)	S.D (6)
LTV	99.74	22.38	80	0	80	0
FICO	749.75	44.31	759.82	40.81	737.06	47.89
Balance	242.20	96.49	264.2	127.1	234.5	92.1
Previous rate	6.07	0.58	5.69	0.74	6.30	0.83
Rate after refinancing	4.67	0.52	4.55	0.51	5.75	0.69
HARP-conforming refi spread	16.07	37.54	-	-	-	-
Conforming refi-purchase spread	-	-	2.83	29.09	-0.55	32.11
Same servicer refi	0.54	0.50	0.33	0.47	0.28	0.45

Table 4 [continued]:

Panel B: HARP refinances by LTV ratio at the time of refinancing

	80 < LTV ≤ 90	90 < LTV ≤ 105	105 < LTV ≤ 125	LTV > 125
	(1)	(2)	(3)	(4)
FICO	752.91	749.73	745.38	741.49
Balance	248.09	245.06	230.69	218.48
HARP-conforming refi spread	11.33	13.46	27.06	33.77
Same Servicer	0.51	0.50	0.62	0.78

Table 5:**HARP-Conforming Refi Spread, Same Servicer Refinances and the LTV Ratio**

Column (1) and (2) of this table presents OLS regression results for a specification with the HARP-conforming refi spread (in basis points) as the dependent variable. The set of control variables includes the three dummy variables that indicate the HARP loan LTV range of (90, 105], (105, 125] and >125. The loans refinanced through HARP with the LTV range (80, 90] serve as the excluded category and have an average HARP-conforming refi spread of 11.33 basis points. In Columns (3) and (4) the dependent variable is the dummy variable, *Same Servicer*, which takes the value of one if the loan is refinanced by the lender servicing the legacy mortgage and is zero otherwise. The set of control variables includes the four dummy variables that indicate the HARP loan LTV range of (80,90], (90, 105], (105, 125] and >125. The conforming refinances with LTV equal to 80 serve as the excluded category (33% of these loans are refinanced by the same servicer). Column (2) and (4) add borrower controls including the current FICO score (and its square) of the borrower and the metropolitan statistical area (MSA) fixed effects corresponding to the location of the property, time fixed effects capturing the quarter/year time during which the loan was refinanced (Year-Quarter FEs), and the fixed effects corresponding to the identity of the lender refinancing the loan (Servicer FEs). Standard errors are included in the parentheses.

	Dependent variable: HARP-conforming refi spread		Dependent variable: Same servicer refinance	
	(1)	(2)	(3)	(4)
80<LTV≤90	-	-	0.19 (0.00)	0.18 (0.05)
90 < LTV ≤ 105	2.13 (0.13)	1.48 (0.44)	0.19 (0.00)	0.19 (0.06)
105 < LTV ≤ 125	15.73 (0.18)	10.98 (2.54)	0.31 (0.00)	0.29 (0.08)
LTV > 125	22.43 (0.22)	15.77 (3.06)	0.46 (0.00)	0.39 (0.10)
Borrower Controls	No	Yes	No	Yes
MSA FEs	No	Yes	No	Yes
Year-Quarter FEs	No	Yes	No	Yes
Servicer FEs	No	Yes	No	Yes
Observations	414,172	414,172	828,344	828,344
Adjusted R-squared	0.04	0.10	0.06	0.36

Table 6:
HARP-Conforming Refi Spread and the Previous Interest Rate

Panel A of this table presents OLS regression results for a specification with the guarantee fee adjusted HARP-conforming refi spread as the dependent variable and the interest rate of a loan prior to refinancing as a control variable. Column (1) presents the basic specification with no controls but the previous interest rate. Column (2) adds borrower controls including the current FICO score (and its square) of the borrower and the metropolitan statistical area (MSA) fixed effects corresponding to the location of the property. Column (3) adds time fixed effects capturing the quarter/year time during which the loan was refinanced. Column (4) adds the fixed effects corresponding to the identity of the lender refinancing the loan and clusters standard errors at the servicer level. Panel B of this table presents the results of a 2-stage least squares regression in which the mortgage rate of a loan prior to refinancing, *Previous rate*, is instrumented with the average 10-year Treasury rate corresponding to the month of origination of legacy mortgage. The first two columns show the first-stage results in which the previous mortgage rate is regressed on the 10-year Treasury rate. Column (1) corresponds to a basic specification without additional controls. Column (2) introduces *Other controls*, including the dummy variables for LTV ranges as in Tables 2 and 3, FICO, FICO squared, year-quarter fixed effects corresponding to the origination of legacy and HARP loan (Year-Quarter FEs), MSA fixed effects, and the servicer fixed effects corresponding to the identity of the servicer handling the loan (Servicer FEs). Columns (3)-(4) present the analogues second-stage results, whereby the dependent variable is the guarantee fee adjusted HARP-conforming refi spread and the control variable is the previous mortgage rate instrumented with 10-year Treasury. In Panel B the standard errors are clustered at the quarter/year level corresponding to the origination time of the legacy loan. Standard errors are included in the parentheses.

Panel A: HARP-conforming refi spread and the previous rate				
	(1)	(2)	(3)	(4)
Previous rate	7.54 (0.10)	5.75 (0.10)	9.97 (0.11)	9.61 (0.78)
90 < LTV ≤ 105		1.69 (0.13)	-0.29 (0.13)	-0.10 (0.42)
105 < LTV ≤ 125		15.02 (0.19)	7.21 (0.20)	6.73 (1.71)
LTV > 125		21.42 (0.24)	10.20 (0.26)	9.31 (1.93)
Borrower Controls	No	Yes	Yes	Yes
MSA FEs	No	Yes	Yes	Yes
Year-Quarter FEs	No	No	Yes	Yes
Servicer FEs	No	No	No	Yes
Observations	414,172	414,172	414,172	414,172
Adjusted R-squared	0.01	0.05	0.10	0.11

Table 6 [continued]:**Panel B:** Harp-conforming refi spread and previous interest rate instrumented with 10-year Treasury rate

	(1)	(2)	(3)	(4)
	Dependent variable: Previous rate (On the original loan)	Dependent variable: Previous rate (On the original loan)	Dependent Variable: HARP-Conforming Refi Spread	Dependent Variable: HARP-Conforming Refi Spread
10-year Treasury	0.61 (0.05)	0.55 (0.04)	-	-
Previous rate instrumented with 10-year Treasury	-	-	4.30 (0.43)	10.91 (0.92)
Other controls	No	Yes	No	Yes
Observations	414,172	414,172	414,172	414,172
Adjusted R-squared	0.45	0.50	0.01	0.11

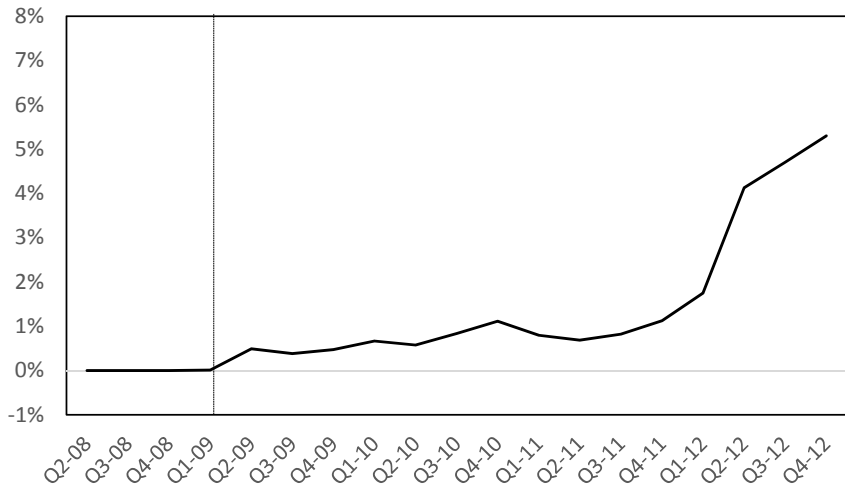
Table 7:
Difference-in-Difference around the Change in the Program Rules

Column (1) and (2) of this table presents the OLS regression results for the specification with the guarantee fee adjusted HARP-conforming refi spread as the dependent variable and a dummy variable, $2013 \times \text{HARP}$, equal to one if a HARP loan was refinanced in the first half of 2013 and equal to zero if it was refinanced in the second half of 2012. The sample period consists of HARP loans originated from Q3 2012 till Q2 2013. Column (1) presents the estimation results for the basic specification model with no additional controls. Column (2) introduces *Other controls*, including the dummy variables for LTV ranges as in Tables 2 and 3, FICO, FICO squared, year-quarter fixed effects corresponding to the origination of legacy and HARP loan, MSA fixed effects, and the servicer fixed effects corresponding to the identity of the servicer handling the loan. Column (3) and (4) present the OLS regression results (in the percentage terms) for the specification with the dummy taking value of one if a loans refinances in given month and zero otherwise. Once the loan refinances it is dropped from the estimation sample. The control variables include *2013* dummy that takes value of 1 if the loan is refinance in the first half of 2013 and equal to zero otherwise, dummy variable *HARP* that takes value of 1 if a loan is HARP eligible (as of July 2012) and is zero otherwise, and the interaction of these two variables $2013 \times \text{HARP}$. In Column (3) and (4) the sample consists of loans eligible for HARP and conforming refinancing, respectively, tracked from July 2012 till June 2013. The excluded category are mortgages that are eligible for confirming refinancing as of July 2012. Standard errors are included in the parentheses.

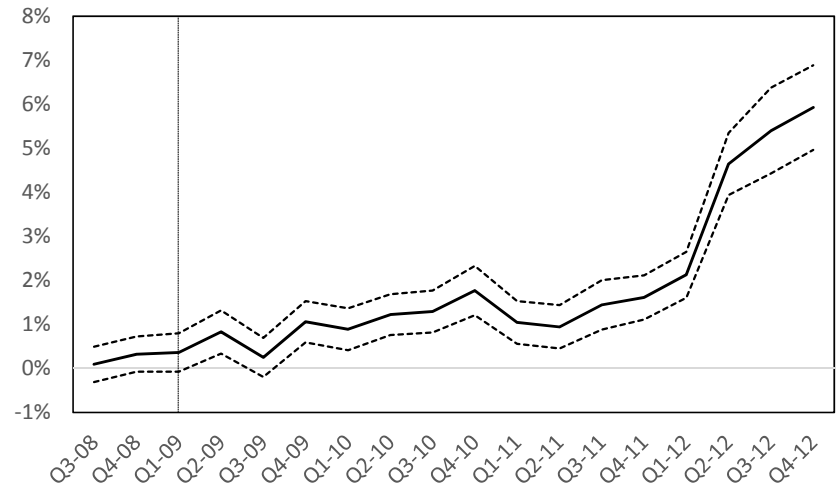
	Dependent variable: HARP-conforming refi spread		Dependent variable: Whether a loan refinances in a given month	
	(1)	(2)	(3)	(4)
$2013 \times \text{HARP}$	-8.11 (0.19)	-9.03 (3.25)	0.10 (0.06)	0.12 (0.06)
2013	-	-	0.10 (0.07)	0.21 (0.06)
HARP	-	-	-0.06 (0.04)	0.22 (0.05)
Other controls	No	Yes	No	Yes
Observations	164,144	146,144	1,181,839	1,181,839
Adjusted R-squared	0.01	0.10	0.01	0.01

Figure 1:
HARP and Refinancing Rate

Panel (a) of the figure shows the percentage of loans refinancing under HARP in the treatment group (eligible loans) in a given quarter. Panel (b) shows the estimated coefficients of interaction terms between quarterly time dummies and the treatment indicator (*HARP Eligible*) along with 99% confidence intervals for the specification where the dependent variable takes the value of one whether the loan refinances (through HARP or otherwise) in a given quarter and is zero otherwise. The refinanced loans exit the estimation sample. The specification is similar to one in Column (4) of Table 2A but where we replace the *After Q1 2009* dummy with a set of quarterly dummies (the excluded category includes observations from 2008:Q2). This specification allows us to investigate the quarter-by-quarter changes in the refinancing rate between the treatment and control group (relative to the level in 2008:Q2). The estimation period is 2008:Q3 to 2012:Q4.



(a) Quarterly HARP refinancing rate in the treatment group

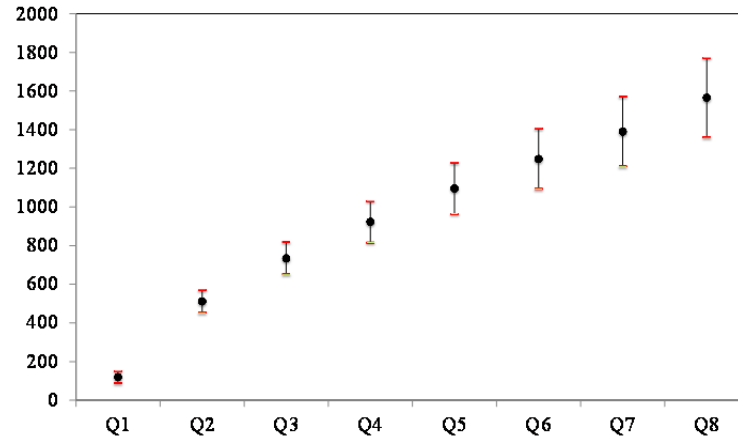


(b) Change in the refinancing rate between treatment and control group

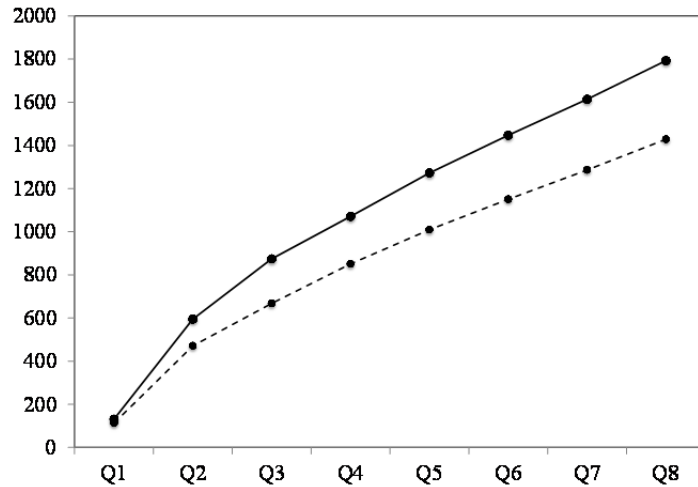
Figure 2:

Cumulative Change in the Durable Spending (New Auto Financing) after the HARP Refinancing Date

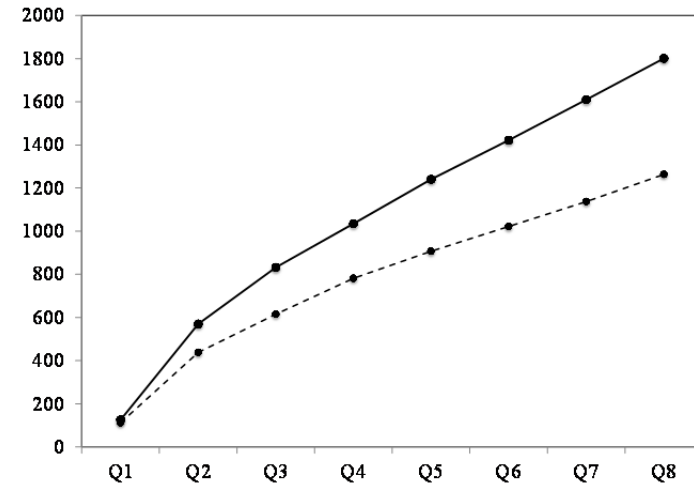
Panel (a) shows the estimated cumulative change in the net amount of new auto financing (in dollars) along with 99% confidence intervals in the eight quarters following the HARP refinancing. These estimates are from a borrower level specification where the dependent variable takes the value of one if a new auto financing transaction takes place in a given quarter and is zero otherwise. We include a set of controls capturing borrower, loan, and regional characteristics and a set of quarterly time dummies that capture the three quarters preceding HARP refinancing and eight quarters following HARP refinancing date. Panel (b) plots the estimates for less indebted borrowers with below median LTV (dashed line) and more indebted borrowers with above median LTV (solid line). Panel (c) plots similar estimates for more creditworthy borrowers with above median FICO (dashed line) and less creditworthy borrowers with below median FICO (solid line). The average differences across these groups in Panels (b) and (c) are statistically significant at 1%.



(a) Cumulative change in the net amount of new auto financing



(b) Less and more indebted (below/above median LTV)



(c) Less and more creditworthy (below/above FICO)

Figure 3:
Geographical Distribution of Zip Codes and HARP Eligible Share

This figure presents the geographic distribution of zip codes in our overall sample across the United States. In addition, the figure displays the fraction of loans in a zip code which are eligible for HARP (as of March 2009). As we observe, there is a significant variation in the *HARP Eligible* share across zip codes (ranging from just few percent of loans being eligible for the HARP program to more than 70%).

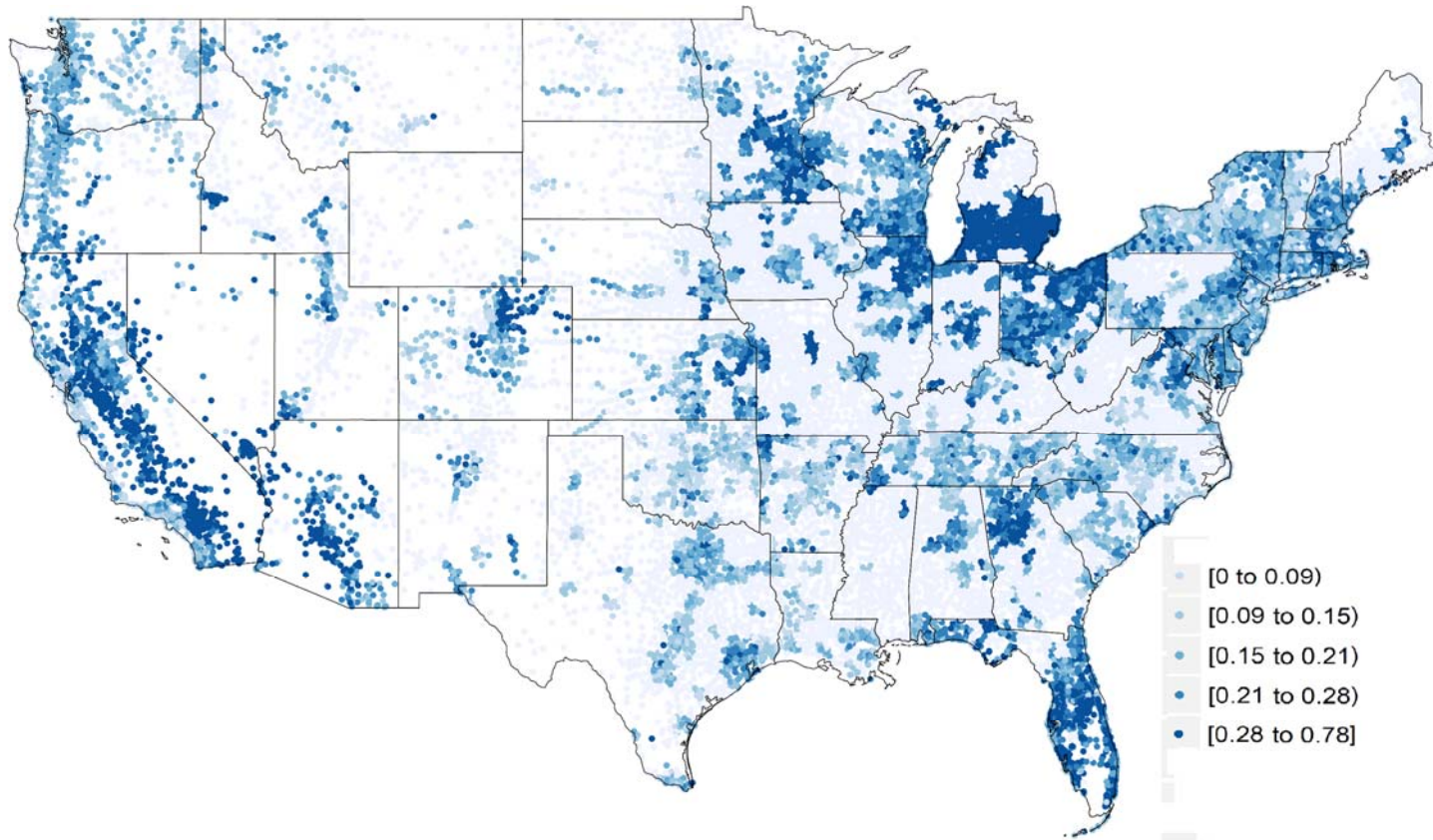
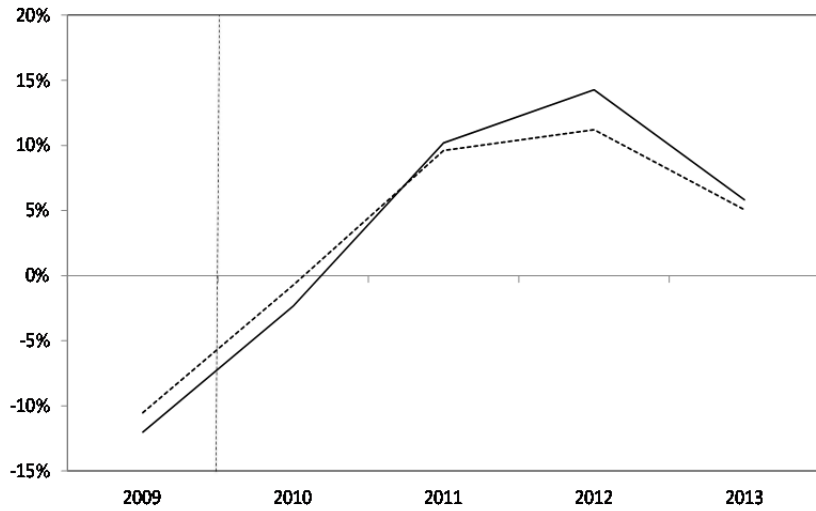


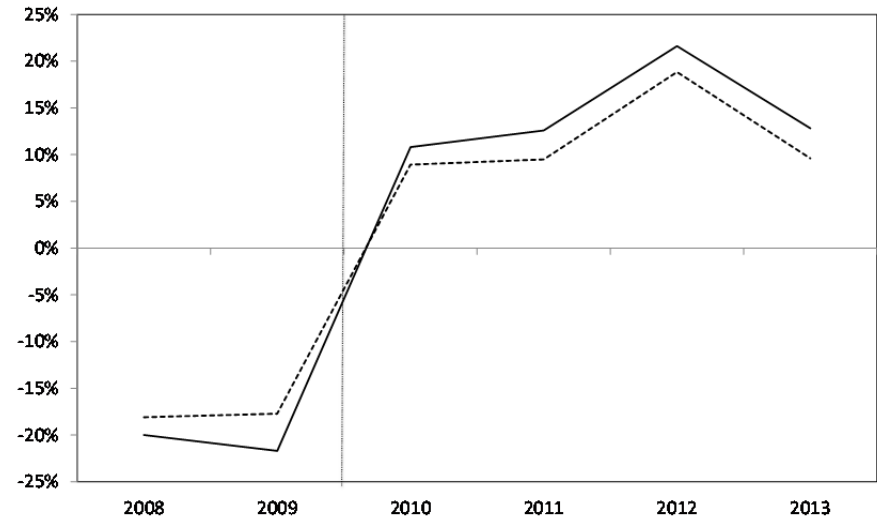
Figure 4:

Regional Evidence: Credit Card Spending, Auto Purchase, and House Price Growth in High and Low HARP Exposed Areas

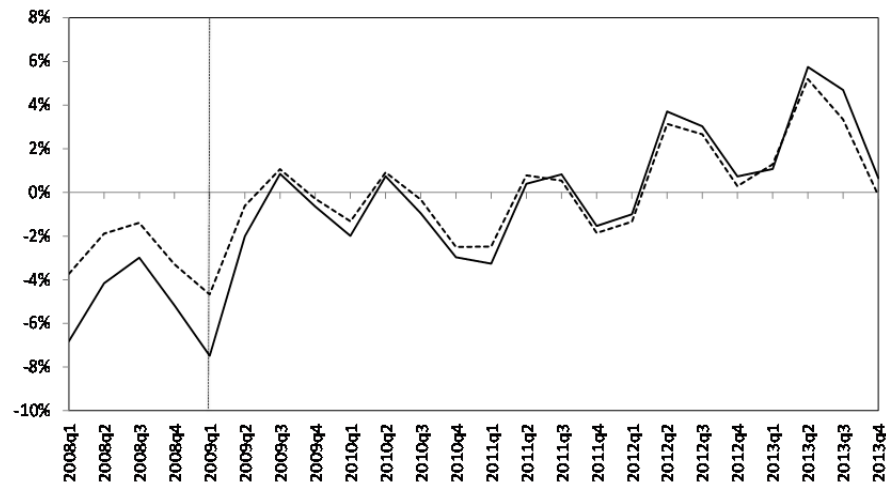
This figure shows the average credit card spending, auto purchase, and house price growth rates in the high HARP exposed (above median *Eligible Share*) and low HARP exposed (below median *Eligible Share*) zip codes. The high HARP exposed group is displayed in solid line and low HARP exposed group is displayed in dashed line. Zip code credit card spending growth is computed using proprietary data from U.S. Treasury. The auto purchase growth data come from Mian and Sufi (2010) (based on R.L. Polk & Company data). The house price growth is computed using CoreLogic zip-code level price indices.



(a) Credit card spending growth



(b) Auto purchase growth

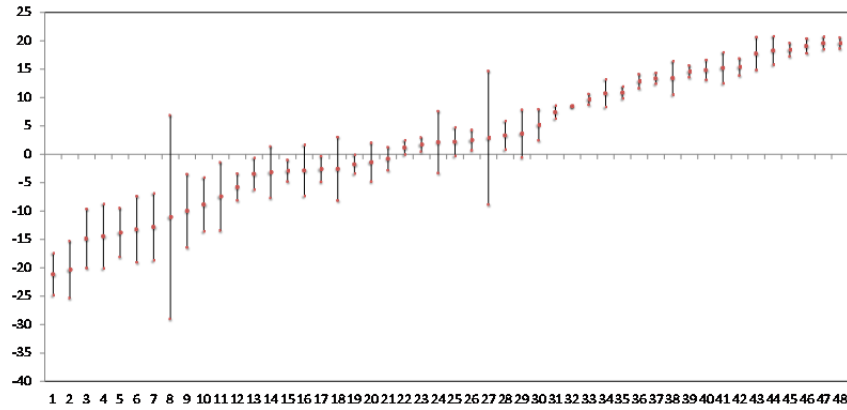


(c) House price growth

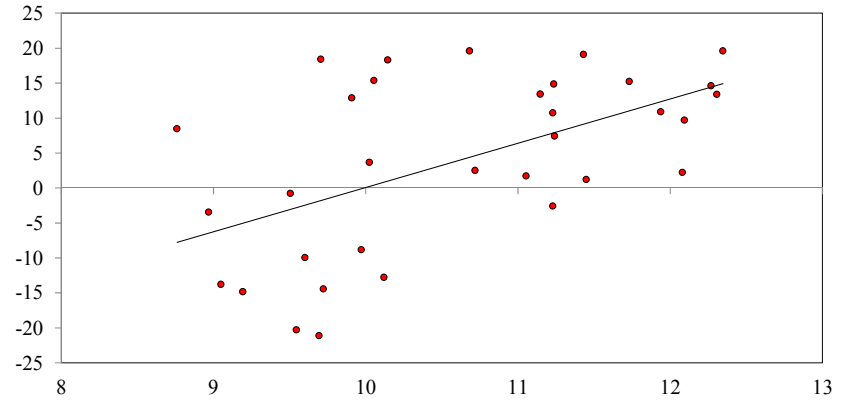
Figure 5:

HARP-Conforming Spread across Lenders

Panel (a) of this figure plots the servicer fixed effects corresponding to the identity of HARP lender from the specification in Column (2) of Table 5, in which the dependent variable is the *HARP-conforming refi spread* along with 95% confidence intervals. Lender names have been anonymized. Panel (b) shows the relation between the lenders' fixed effects (y-axis) and their log asset size as of 2009 (x-axis). This figure is plotted only for the lenders for which we have asset size data collected from publicly available sources.



(a) Lenders' fixed effects

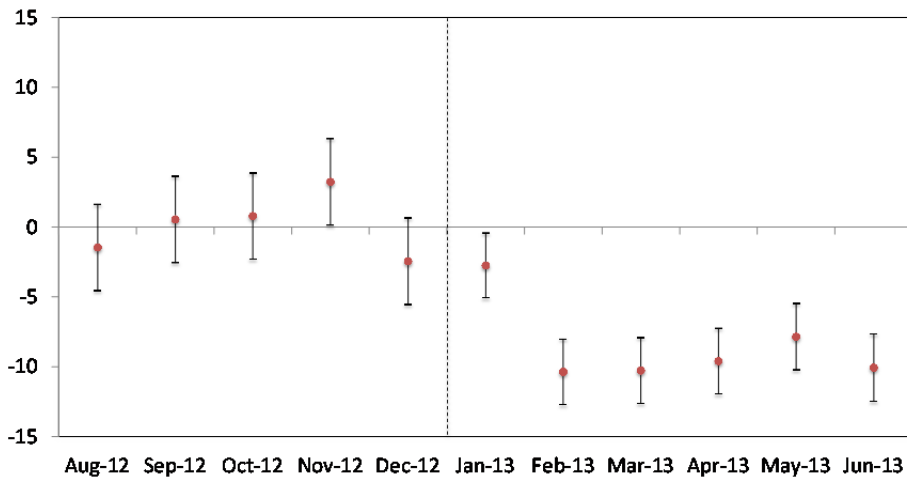


Lender's fixed effects and log asset size

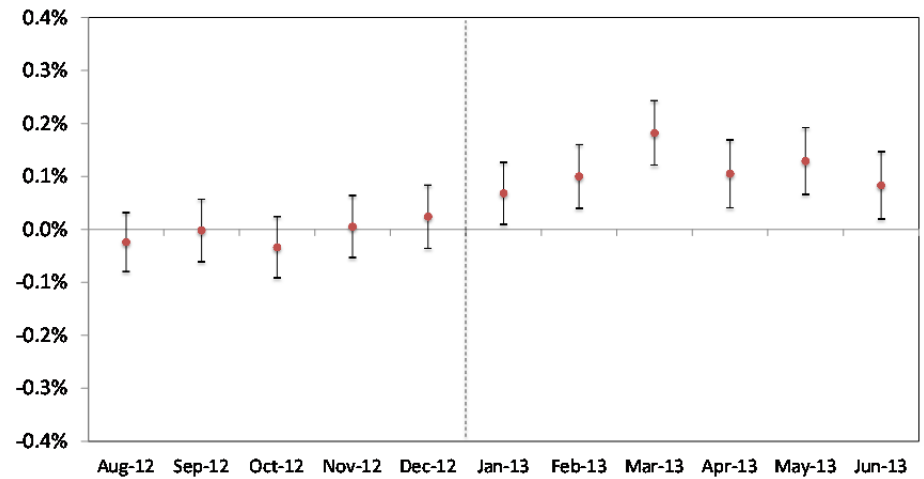
Figure 6:

Change in the Program Rules and the HARP-Conforming Refi Spread and Harp-Conforming Refinancing Rate

Panel (a) of this figure plots the estimated coefficients (based on OLS) for monthly fixed effects along with 99% confidence intervals around these estimates from a regression of HARP-conforming refi spread (in basis points) on a set of borrower and loan characteristics including current loan LTV ratios, borrower credit scores, servicer fixed effects, MSA fixed effects, previous rate, and monthly time fixed effects. The excluded category corresponds to HARP refinances that occurred during July 2012 so the plotted coefficients show the estimated change relative to the spread from this period. Panel (b) shows the corresponding results from the specification where now the dependent variable takes the value of one if the loan refinances in a given month and is zero otherwise. The plotted coefficients are the estimated interaction terms of time dummies with *HARP eligible* dummy. In panel (b) the base category are loans that are eligible for conforming refinances (loans with current LTV as of June 2012 less than 80). The displayed coefficients in panel (b) show the estimated change in the difference between refinancing rates of HARP and conforming loans (relative to the level in July 2012). The estimation period is from July 2012 till June 2013. As we observe the HARP spread and the difference between refinancing rates of HARP eligible and conforming loans generally persists at a stable level prior to the change in program rules in January 2013. Once the new rules are in place the spread declines sharply by about 10 basis points in 2013 and the HARP refinancing rate experiences a significant differential increase (by about 0.12% per quarter).



(a) Change in the HARP-conforming spread



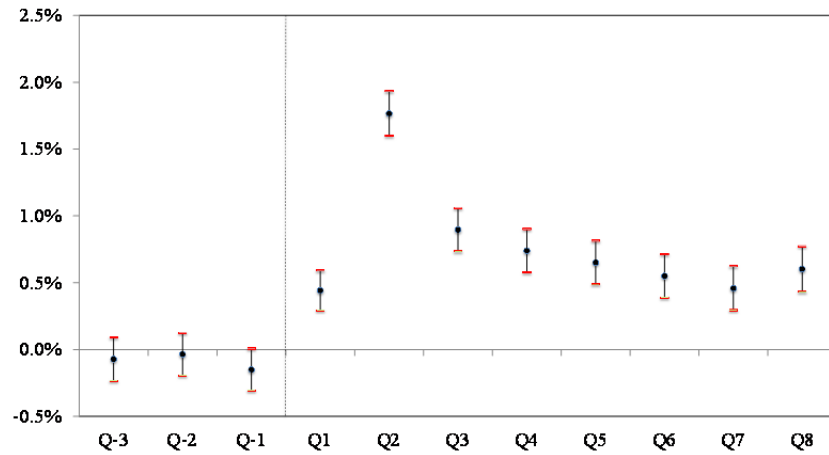
(b) Change in the refinancing rate

On-Line Appendix

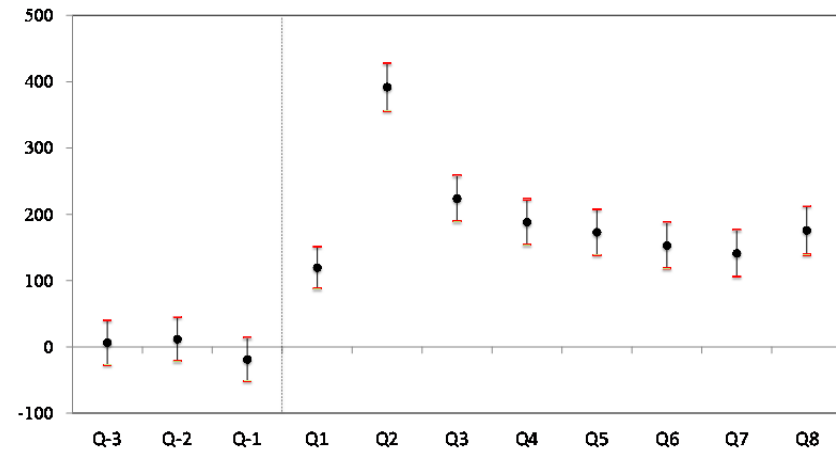
Appendix A.1:

Borrower-Level Evidence: Change in the Durable Spending (New Auto Financing) around the HARP Refinancing Date

Panel (a) of this figure plots the OLS estimates for quarterly time fixed effects (along with 99% confidence intervals) from the specification where the dependent variable takes the value of one if a new auto financing transaction takes place in a given quarter and is zero otherwise. In this specification we include a set of controls capturing borrower, loan, and regional characteristics and a set of (plotted) quarterly time dummies that capture the three quarters preceding HARP refinancing and eight quarters following HARP refinancing date. Panel (b) shows the corresponding results for the specification with the net amount of new auto financing (in dollars) as the dependent variable.



(a) Change in the probability of new auto financing



(b) Change in the net amount of new auto financing

Appendix A.2:

Borrower-Level Evidence: Change in the Durable Spending (New Auto Financing) and the Rate Reduction due to HARP

This table presents OLS estimates from the specification where the dependent variable is the average quarterly probability of new auto financing in percentage points (Column 1 and 2) and net dollar amount of new auto financing in dollars (Column 3 and 4) after the HARP refinancing date less the corresponding value prior to the HARP refinancing. The control variable *Rate Reduction* captures the difference between the legacy interest rate and rate on refinanced HARP loan (in percentage terms). Columns (1) and (3) present the estimation results for the basic specification with no additional controls. Columns (2) and (4) add borrower controls that include variables such as FICO credit score, LTV, interest rates and the fixed effects for the location (MSA) of the property (*MSA FEs*). Column (2) and (4) clusters standard errors at the MSA level. The estimation sample consists of a set of borrowers refinancing their loans thru HARP during Q2 2009 till Q4 2012 and tracked over the period of two years after their refinancing date. Standard errors are included in the parentheses.

	Probability of new auto financing		Net amount of new auto financing	
	(1)	(2)	(3)	(4)
Rate reduction	0.20 (0.03)	0.12 (0.04)	55.15 (11.25)	36.94 (72.13)
Borrower Controls	No	Yes	No	Yes
MSA FEs	No	Yes	No	Yes
Year Quarter FEs	No	Yes	No	Yes
Servicer FEs	No	Yes	No	Yes
Observations	233,283	233,283	233,283	233,283
Adjusted R-squared	0.001	0.001	0.001	0.001

Appendix A.3:

Regional Evidence: Mortgage Rate Reduction, Program Refinancing Rate and the Fraction of Eligible Loans and Eligible Loans Serviced by High Cost Lenders in a Zip Code

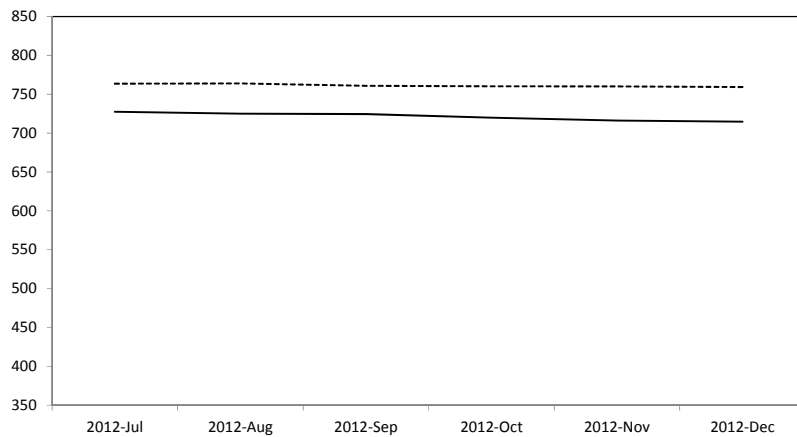
Column (1) and (2) of this table investigates the relation between the reduction in the average mortgage rate in a zip code due to HARP (in basis points) during first four years of the program and zip code level *Eligible Share* and *Eligible and High Cost Servicer Share*. *Eligible Share* is the fraction of loans in a zip code that are GSE and have current LTV ratios greater than 80 prior to the program implementation. *Eligible and High Cost Servicer Share* is the fraction of loans in a zip code that are GSE, have current LTV ratios greater than 80 and are serviced by high cost servicers prior to the program implementation. We also include a set of controls including the zip code average FICO credit score, LTV ratio, interest rate on mortgages along with the average zip code house price growth over the prior five years and state fixed effects. Column (1) presents the specification without *Eligible and High Cost Servicer Share* control, while Column (2) repeats this analysis, but includes this variable in the set of controls. Columns (3) and (4) provide the corresponding analysis for the fraction of loans in a zip code refinancing under HARP as the dependent variable. The servicer is classified as high cost if it is in the top quartile of servicers with the highest estimated fixed effects as displayed in Figure 5A. These high cost servicers account for over 60% of loans in our data. The analysis is based on a sample of 3,443 zip codes. Standard errors (based on the OLS estimates) are included in parentheses.

	Dependent variable: Reduction in the average mortgage interest rate in a zip code due to HARP (in basis points)		Dependent variable: Fraction of loans in a zip code refinancing under HARP	
	(1)	(2)	(3)	(4)
Eligible Share	38.0 (0.01)	49.1 (0.03)	0.24 (0.01)	0.35 (0.01)
Eligible and High Cost Servicer Share	-	-17.4 (0.05)	-	-0.16 (0.03)
Zip Code Controls	Yes	Yes	Yes	Yes
State FEs	Yes	Yes	Yes	Yes
Adj. R-squared	0.70	0.71	0.68	0.69

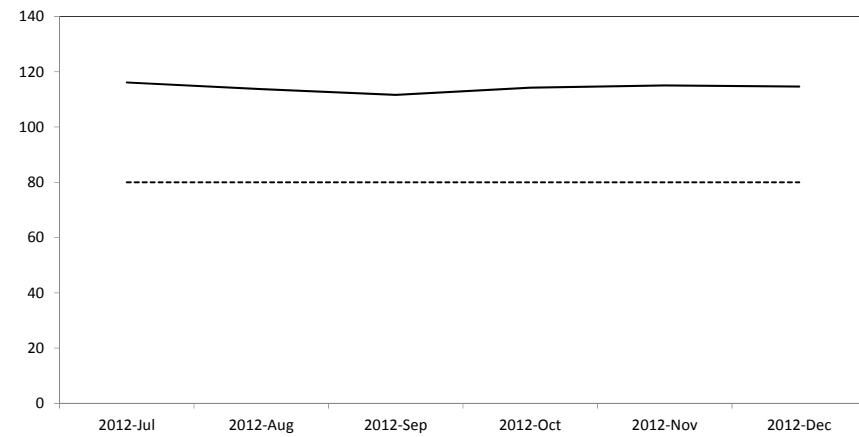
Appendix A.4:

Evolution of Observables among HARP and Conforming Refinances prior to the Program Change

This figure we track the evolution of average FICO credit score of borrowers (panel a) and LTV ratio (panel b) at the time of loan refinancing among HARP and conforming refinance during the six months preceding the change in the program rules. The solid line represents HARP refinances while the dashed line shows the corresponding means for conforming refinances. As we observe the average LTV ratio for HARP refinances consistently remain about 30% above that for conforming refinances, with little relative change over time (by construction our benchmark conforming refinances have LTV ratios equal to 80 percent). We also do not observe a substantial relative variation in the borrower credit scores between HARP and conforming refinances.



(a) FICO credit score

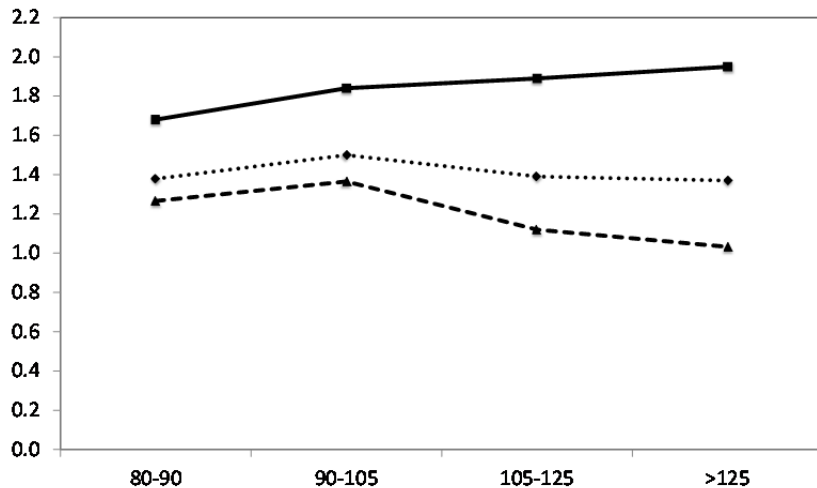


(b) LTV

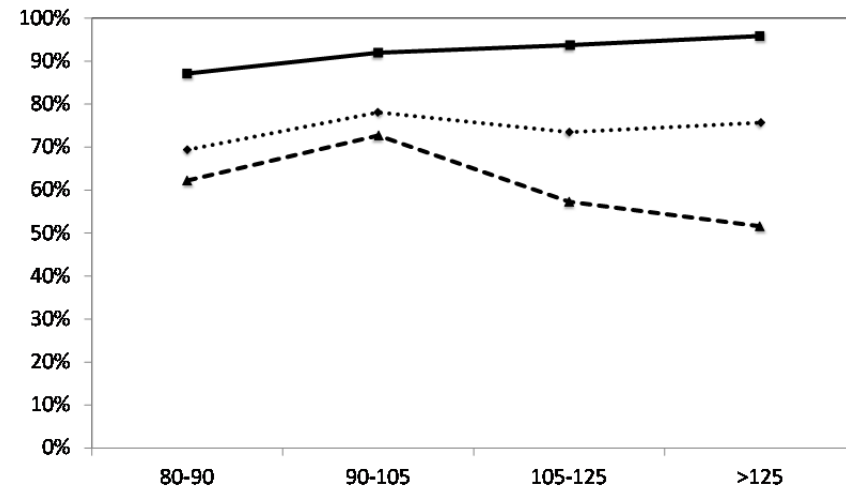
Appendix A.5:

Simulation of the Program Effectiveness: Impact of Guarantee Fees and Servicer Markups on the Borrowers' Savings (Intensive Margin) and the Refinancing Rate (Extensive Margin)

In this appendix we perform a simple simulation to assess the impact of guarantee fees and servicer markups on the borrowers' savings (intensive margin) and the refinancing rate (extensive margin) induced by HARP. The figure plots the simulated interest rate savings of the borrowers (panel a) due to the HARP refinancing (in percentage points) and the percentage of eligible borrowers refinancing their loans under the HARP (panel b) across the borrowers current LTV ratios as of March 2009 (the date of the program implementation). Top solid line shows the case in which borrowers can refinance (at no additional cost) to the benchmark conforming rate (with no guarantee fees) as of March 2009. The middle dashed line shows the case in which borrowers face the HARP guarantee fees. The bottom dashed line corresponds to the case when borrowers face both the HARP guarantee fees and the predicted servicer "monopolistic" markups when they refinance their loans. To predict this markup we use the estimates from our specification in Column (4) of Table 5. In the calculation in panel (b) we assume that in order to refinance the borrowers need to obtain an annual interest rate reduction of at least 1% (100 basis points per year). *Source:* a random sample of all borrowers with 30 year FRMs that were eligible for HARP as of its implementation date in March 2009 based on their estimated LTV ratios of greater than 80 percent. This sample amounts to more than 1.1 million conforming mortgages from a large secondary market participant, which is more than 15% of the entire population of eligible loans.



(a) Interest rate savings on HARP refinances (in percentage points)



(b) Percentage of eligible borrowers refinancing under HARP