

Getting to the Core: Inflation Risks Within and Across Asset Classes*

Xiang Fang[†] Yang Liu[†] Nikolai Roussanov[‡]

November 2021

Abstract

Decomposing inflation into core and non-core components (e.g., energy) sheds new light on the nature of inflation risk and risk premia. While stocks have insignificant exposures to headline inflation in the U.S., their core inflation betas are negative while energy betas are positive. Conventional inflation hedges such as currencies and commodities only hedge against energy inflation risk but not the core. These hedging properties are reflected in the prices of inflation risks: only core inflation carries a negative risk premium and its magnitude is consistent both within and across asset classes, whereas the price of energy inflation risk is indistinguishable from zero. The relative contribution of core and energy inflation to the headline inflation varies over time, which helps explain why the correlation between stock and bond returns appears to switch sign in the data. We develop a two-sector New Keynesian model to account for these facts.

*First version: August 2020. We thank Ravi Bansal, Paolo Cavallino (discussant), Anna Cieslak, Nuno Clara (discussant), Winston Dou, Bjorn Eraker (discussant), Joao Gomes, Zhengyang Jiang (discussant), Xuewen Liu, Ali Ozdagli (discussant), Carolin Pflueger (discussant), Ivan Shaliastovich, Andrea Vedolin (discussant), Robert Vigfusson (discussant) as well as seminar and conference participants at ASU Sonoran Conference, CEBRA Workshop for Commodities and Macroeconomics, CICF, EFA, FIRS, HKU, JHU Carey Finance Conference, Kellogg, MFA, SED, Triangle Macro Finance Seminar, Vienna Symposium for Foreign Exchange Markets and Wharton for their valuable comments and suggestions. All errors are our own.

[†]HKU Business School, University of Hong Kong

[‡]The Wharton School, University of Pennsylvania and NBER

1 Introduction

Inflation is a key macroeconomic factor and a fundamental source of risk driving asset returns. Conventional wisdom holds that fixed income securities incur losses in the face of inflation, but stocks, foreign currencies, commodities, and real estates maintain their values in real terms. Stocks are claims on real physical assets. Foreign currencies appreciate when domestic price levels rise. Commodity prices are important components of total inflation. If investors fear inflation they might accept lower average returns on assets that provide some protection against inflation risk (Chen, Roll, and Ross, 1986). Yet empirical evidence of such a risk premium has been elusive, as have the inflation-hedging properties of supposedly “real” assets, notably stocks (e.g., Fama and Schwert (1977), Bekaert and Wang, 2010, Katz et al., 2016).

We demonstrate that decomposing inflation into core and non-core components (particularly energy) is important as it sheds new light on the nature of inflation risks. First, core and energy inflation series have sharply different statistical and economic properties. Second, inflation-hedging properties of conventional “real assets,” such as stocks, currencies, commodity futures, and real estate, are largely confined to energy inflation, while they provide almost no protection against core inflation risk. Third, core inflation carries a significantly negative price of risk, while the risk price associated with energy inflation is positive but indistinguishable from zero.

In the data, core inflation is much more stable and persistent than energy inflation. Core and energy inflation series have a very low correlation, despite both being highly correlated with headline inflation. Economically, core goods’ prices have a substantially higher degree of rigidity than energy prices, and are potentially driven by different supply and demand shocks. These distinctions, largely glossed over in the literature, can potentially lead to very different ways in which inflation risks manifest themselves in asset prices.

Armed with this decomposition, we revisit inflation-hedging properties of different assets. We examine 8 major asset classes: U.S. stocks, Treasury notes/bonds, agency bonds, corporate bonds, currencies, commodity futures, real estate investment trusts (REITs), and international stocks. The broad coverage of assets is informative since investors often consider multi-asset-class allocations when it comes to managing inflation risks. Our estimates of headline inflation betas confirm, to some extent, the conventional view on inflation hedging. Fixed income securities have negative headline inflation betas, while currencies, commodities and REITs have positive betas. Stocks’ headline betas are mostly negative but often statistically insignificant. After decomposing headline inflation into core and energy, we find that assets’ exposures to the two components are sharply different. All stock and REITs portfolios have consistently significantly negative core betas and positive energy betas and they hedge

against energy inflation. Treasuries and agency bonds are negatively exposed to both core and energy inflation shocks, and corporate bonds have negative core betas and insignificant energy betas. The exposures of currencies and commodity futures to energy are positive and those to core inflation are negative but insignificant. Therefore, the conventional view mixes the two distinct components of inflation, core and energy, in a way that potentially obscures their effects on asset prices. For example, stocks' insignificant headline betas are due to mixtures of negative core betas and positive energy betas. Currencies, commodities, and REITs, often considered as inflation-hedging assets, only hedge against the energy inflation but not the core.

The next question is the cost of inflation hedging. How much return are investors willing to give up to hold inflation-hedging assets? The cost of inflation hedging, or the price of inflation risks, reflect investors' attitude toward inflation. To answer this question, we conduct cross-sectional asset pricing tests using both the 8 average portfolios in each asset class and a larger cross section of 38 test portfolios. The price of headline inflation risk is around zero and insignificant. This result seems to indicate that hedging against inflation is free, consistent with the elusive inflation risk premium in the previous literature. However, when we differentiate core from energy inflation, a different picture emerges. Core inflation carries a significantly negative price of risk, and the price of energy inflation risk is positive but indistinguishable from zero. In other words, hedging against core inflation is costly, while hedging against energy inflation is essentially "free."

In addition to the unconditional inflation risk exposures of these test portfolios, we examine how these exposures - and their prices - vary over time. We show that term spread is a useful conditioning variable for capturing time-variation in the price of core inflation risk. Splitting the sample allows us to further investigate the time-varying inflation risk exposures. This analysis provides a novel explanation for the changing signs of stock-bond return correlation at the turn of the century (Song, 2016; Campbell et al., 2019). Stocks, currencies, commodity futures, REITs, and international stocks have energy betas that are significantly larger in the post-1999 subsample than before, while the changes in core betas are insignificant. Moreover, core inflation becomes less volatile after the 1980s while energy inflation fluctuates more widely in the 2000s. The growing dominance of energy in total inflation (relative to core) and its positive correlation with stock returns serves as a potentially new explanation for why the correlation between bond and stock returns switches from positive to negative in the recent subsample. Before 1999, core inflation is relatively more important. Both stocks and bonds have negative core betas, so their correlation is positive. After 1999, energy inflation becomes dominant, and stocks and bonds have different energy betas in sign. As a result, the correlation between stock and bond returns turns from positive

to negative.

We further take advantage of our multi-asset-class setting to estimate the price of inflation risks within each asset class. Strikingly, the magnitude of core inflation risk price is rather consistent across asset classes. Average returns of assets line up well with core inflation betas both within and across asset classes, but are essentially unrelated to betas with energy or headline inflation. Therefore, different asset classes imply a largely consistent cost of hedging against core inflation. We construct the factor mimicking portfolios for headline, core, and energy inflation using portfolios from each asset class. Only the average returns of core inflation mimicking portfolios behave similarly, while the average returns of headline and energy inflation mimicking portfolios are unrobust and switch signs for different asset classes.

The empirical results are robust to controlling for various measures of real consumption risk and other macroeconomic factors.¹ In a seminal paper, Fama (1981) proposed that low inflation is a proxy for high growth of real activity, leading to the negative inflation betas of stocks. Our results show that core inflation is an important risk by itself, and, while it leads output, dividend, and consumption growth in the manner that Fama suggested, it is not driven out by standard measures of real activity. This echoes the findings in the New Keynesian DSGE literature that argues inflation “dances to its own tune.” (Smets and Wouters, 2007)

Why is core inflation risk different from energy? We explore a potential mechanisms empirically by looking at different categories of inflation. We use inflation measures constructed using goods and services whose prices are either “sticky” or “flexible” and find that they resemble core inflation and energy inflation, respectively, in both their risk exposures and risk premia. This fact is consistent with the idea that energy prices are fundamentally different from core because they are flexible, while the latter exhibits considerable stickiness.

In order to interpret our empirical findings, we develop a two-sector New Keynesian model that rationalizes the stylized facts listed above: (i) stocks are negatively exposed to core inflation; (ii) Treasuries (and nominal bonds more generally) are negatively exposed to both core and energy inflation; (iii) currencies and commodity futures are positively exposed to energy inflation; (iv) core inflation carries a negative price of risk while the price of energy inflation risk is positive but potentially difficult to distinguish from zero due to the countervailing effects of energy demand and supply shocks.

Our model includes the minimum set of ingredients necessary to qualitatively account

¹We consider consumption growth rate, durable consumption growth rate (Yogo, 2006), industrial production growth rate (Chen et al., 1986), payroll growth rate, unemployment growth rate, and the long run and short-run consumption growth news constructed by Hansen et al. (2008), unfiltered consumption growth (Kroencke, 2017), and capital share growth (Lettau et al., 2019).

for our empirical findings. In a small-scale New Keynesian economy with an energy sector, households consume both core and energy goods. There is a continuum of varieties of core goods, and each variety is produced by a monopolistic firm that chooses to set the nominal price of the good. Firms face price stickiness, i.e., only a fraction of firms can adjust their prices freely. The desired markup fluctuates exogenously and is the main driver of core inflation. This is a modeling device to capture the variation of inflation that is independent of other real macroeconomic and policy shocks. Energy goods are subject to energy supply and demand shocks and, importantly, face no price rigidity.

When a markup shock increases the cost of production, core inflation rises, core output drops, and thus the marginal utility of consumption increases. Therefore, core inflation carries a negative price of risk. Stocks, claims to the core output, are negatively exposed to core inflation. Naturally, Treasuries have negative betas with core inflation. Furthermore, energy supply and demand shocks have opposite effects on energy inflation, but both shocks are expansionary to core production when core and energy goods are complementary. Therefore, an increase of energy consumption implies a higher consumption in core good. Since a high energy price combines the effect of negative supply and positive demand, their effects on core output, core inflation, and thus the stochastic discount factor are opposite in their signs. As a result, energy inflation carries a price of risk indistinguishable from zero. When the demand is the major driver of energy inflation, the model implies positive energy betas for stocks and currencies and negative betas for Treasuries, which is consistent with what we observe in the data.

Related Literature A large body of literature studies the inflation-hedging properties of financial assets (Fama and Schwert, 1977; Boudoukh and Richardson, 1993; Bekaert and Wang, 2010). Stocks have negative correlation with unexpected inflation, thus being poor inflation hedges. Fama (1981) argues that the negative correlation is caused by real activity that is correlated positively with stock returns and negatively with inflation. Katz, Lustig, and Nielsen (2017) propose that stock investors respond slowly to inflation. Nominal bond returns negatively covary with inflation. Commodity futures returns are positively correlated with inflation (Gorton and Rouwenhorst, 2006), but the correlation with core inflation is weak (Kogan and Konstantinovskiy, 2008).

The cost of inflation hedging, a.k.a. the inflation risk premium, has been of great interest for the literature exploring the macroeconomic source of risks. In the stock market, Chen, Roll, and Ross (1986) document a marginally negative price of inflation risk. Boons et al. (2019) show that inflation risk is priced in the inflation-beta-sorted stock portfolios but its sign changes from negative to positive after 2000. Inflation risk is a common feature in

term structure models that distinguish between real and nominal bonds (Ang, Bekaert, and Wei, 2008). While most of this work has focused on the headline inflation, one important exception is Ajello, Benzoni, and Chyruk (2019) who incorporate both core and “crust” inflation components into an affine term structure model. In currencies, Hollifield and Yaron (2003) find little evidence of an inflation risk premium. Clarida and Waldman (2008) show that the relation between inflation and exchange rate reflects the conduct of monetary policy, and Stavrakeva and Tang (2019) uncover the information channel of monetary policy that drives inflation and exchange rates. Fleckenstein et al. (2017) show an important deflation risk. Kang and Pflueger (2015) show credit spreads rise with inflation volatility. In contrast to much of this work, we utilize a large cross section of multi asset classes including currency portfolios (Lustig et al., 2011, 2014; Menkhoff et al., 2017; Verdelhan, 2018) and commodity futures portfolios (Bakshi, Gao, and Rossi, 2019) and find largely consistent magnitudes of inflation risk premia across them.

Among theoretical studies of inflation risks and asset prices, several equilibrium models with an endowment economy can quantitatively match inflation, term structure and stock returns (Buraschi and Jiltsov, 2005; Wachter, 2006; Piazzesi and Schneider, 2006; Bansal and Shaliastovich, 2012). In Bansal and Shaliastovich (2012), the inflation premium is due to the negative effect of inflation on future long-run real growth. Eraker et al. (2016) further find the inflation-growth effect is more pronounced in the durable goods sector, and durable stocks are more exposed to inflation risks. Song (2016) estimates a regime-switching model and variations in the cyclical properties of inflation and its premium. To explain the new facts, we propose a New Keynesian model with production and an energy sector and study it analytically. Our model highlights the role of markup shock as the major source of priced inflation risk. This is consistent with Smets and Wouters (2007) that emphasize that inflation is mostly driven by markup shocks in a quantitative New Keynesian DSGE model. Kung (2015) builds a New Keynesian model with an endogenous interaction between inflation and real growth in order to account for several stock and bond price puzzles. Campbell, Pflueger, and Viceira (2019) estimate a New Keynesian model and show that time-varying stock-bond correlation is driven by monetary policy regimes. Weber (2015) shows that firms facing stronger price rigidity earn a premium. Bhamra et al. (2018) study the inflation effects on default risk and equity valuation in the presense of sticky leverage and price.

A series of studies examine the changing signs of the stock-bond correlation in the late 1990s (Campbell et al., 2009; Song, 2016; Campbell et al., 2019; Cieslak and Pang, 2020). The breakdown of inflation in our analysis provides a complementary explanation.

This paper also contributes to studying the interaction between commodities and other asset prices (Ready, Roussanov, and Ward, 2017a,b; Ready, 2017). Barro and Misra (2016)

study the gold returns in the historical data and in a rare disaster model and find that gold cannot hedge real macroeconomic risks. Similar to their finding, we show that gold is not a good hedge for core inflation either. Commodities are not only an asset class but also a source of macroeconomic risk in their own right. We explicitly model and analyze the role energy commodities in driving inflation risk. There is an ongoing debate in the literature regarding the relative importance of different types of shocks (e.g. supply vs. demand) in driving the prices of key energy commodities such as crude oil (Kilian, 2009; Baumeister and Hamilton, 2018; Ready, 2018). We contribute to this literature by bringing in asset prices, which move differently in response to shocks to energy demand and supply, as an additional source of identifying variation.

2 Empirical Analysis

2.1 Data and Descriptive Statistics

2.1.1 Inflation

We use the consumer price index (CPI) and its components from the U.S. Bureau of Labor Statistics as inflation measures.² The CPI has three components: core (CPI less food and energy), food, and energy. The expenditure categories in core include shelter, household furnishings and operations, apparel, transportation, medical care, recreation, education and communication, alcoholic beverages, and others goods and services (tobacco, personal care, etc). The sample is at the quarterly frequency from 1963Q2 to 2019Q4.

The Panel A of Table 1 reports the summary statistics of inflation. The headline inflation (CPI) and its three components have similar average of about 4 percent per annum over the sample. Core, food, and energy differ greatly in their volatility and persistence. Core inflation has a low volatility and a high persistence, with a standard deviation of 2.66 percent per annum and an autocorrelation of 0.79. In contrast, energy inflation is much more volatile with a standard deviation of 19.52 percent per annum and exhibits little persistence. The food inflation stands between core and energy inflation in both volatility and persistence. The large difference in their persistence can be attributed to the different degree of price rigidity in those goods. Core goods and services, such as apparel, shelter, medical care, feature stronger price rigidity, while energy prices are flexible.

Panel B of Table 1 reports the relative weights of the three components in the headline inflation. These weights are obtained by regressing the headline inflation onto the three

²An alternative measure of inflation is the price level index for personal consumption expenditure (PCE). In the appendix, we report similar results using PCE instead of CPI.

components. Core inflation accounts for 71 percent of headline inflation, food accounts for 20 percent, and energy accounts for the least, only 9 percent of headline inflation. Although core inflation accounts for the largest portion, energy inflation is much more volatile and substantially drives headline inflation fluctuations as well.

In Panel C of Table 1, we examine the correlation structure of headline inflation and the three components. All three components are fairly correlated with headline inflation (core 0.80, food 0.60 and energy 0.69). However, the correlations across the three components are much lower. Energy inflation is correlated with neither core (0.20) nor food inflation (0.17), while food and core inflation has moderate correlation of 0.44.

To summarize, the three components of headline inflation have distinct volatility and persistence, and they are not correlated with each other, especially the core and energy components. Because energy inflation exhibits a stark contrast with the core inflation, we focus on the core and the energy part of the noncore inflation, and leave out the food part for parsimony.

2.1.2 Asset Returns

We use test portfolios from a wide and standard asset classes: stocks, Treasuries, agency bonds, corporate bonds, currencies, commodity futures, REITs, and international stocks. We first consider an average portfolio in each asset class. An average portfolio for stock, agency bond, commodity future, REITs, and international stock is constructed using the respective market index. The average Treasury and corporate bond portfolio returns are the average of the cross-sectional portfolios below. The average currency portfolio is the equal-weighted average of the six interest rate sorted carry portfolios.

We examine a wider cross section by including a set of portfolios in each asset class. These assets include 5 industry stock portfolios (consumer, manufacturing, high tech, health, and others), 7 fixed-term Treasury portfolios, 4 maturity sorted agency bond portfolios, 4 maturity sorted corporate bond portfolios, 6 interest rate sorted currency carry portfolios (Lustig et al., 2011) and the dollar carry portfolio (Lustig et al., 2014), 5 commodity future portfolios of major categories (livestock, industrial metal, precious metal, energy, and agriculture), 3 REITs portfolios (equity, mortgage, and hybrid), and 3 regional international stocks (North America, Europe, Far East). These data are obtained from different sources: stock returns are from Ken French's website; Treasury returns are obtained from CRSP; agency bond returns are calculated based on ICE BofA agency index; corporate bond are from Barclays; currency data are downloaded from Datastream; commodity returns are constructed from the GSCI index; REITs returns are obtained from CRSP Ziman REITs indexes; and international stock returns are from MSCI indices in Datastream. Data for different asset classes

have different starting dates. The longest data go back to 1963 for stocks and Treasuries. Corporate bond data start from 1973, REITs data start from 1980, and currency data start from 1983. Commodity future returns start from different dates: 1970 for livestock and agriculture, 1973 for precious metal, 1977 for industrial metal, and 1983 for energy. International stock return data start from 1969.

The summary statistics of the average portfolios in each asset class and the cross section of test portfolios are shown in the first two columns of Table 2 and 3. Notably, assets in different asset classes are highly dispersed in average excess returns. For example, the 5 stock portfolios and 3 international stock portfolios have an average excess return of around 7 percent, and the 4 corporate bond portfolio excess returns are 3 percent on average. Treasury excess returns are smaller from 1 to 3 percent. Currency excess returns are dispersed, from -1.81 percent for the lowest interest rate portfolio to 5.56 percent for the highest interest rate portfolio, and the dollar carry portfolio has an average return of 5.34 percent. Commodity futures' excess returns are dispersed as well, from about zero for agriculture and above 7 percent for energy. The equity and hybrid REITs have excess returns even higher than stocks and the mortgage REIT's average excess return is about 5 percent. Stocks, commodity futures and REITs returns are the most volatile, while Treasury returns are the least volatile.

2.1.3 Inflation Shocks

To study the inflation risk, we extract the unexpected component in headline, core, food, and energy inflation from the following VAR system.

$$Y_t = c + AY_{t-1} + \varepsilon_t, \tag{1}$$

where Y_t includes the vector of headline, core, food, and energy inflation, plus the risk-free rate, price-dividend ratio of the aggregate stock market portfolio, and the output gap. The first four elements of ε_t are extracted as the innovations to the four inflation variables in the vector of Y_t . Figure 1 plots the time-series of innovations to the four inflation variables.

The headline inflation shock combines the variation of the three elements. The large spikes in headline inflation shocks are generally driven either by energy or food inflation. For the episodes of 1970s and 1980s, the core inflation is quite volatile. Before mid 1980s, core inflation tracks the headline inflation closely. After mid 1980s, core inflation is much less volatile than the headline. Energy inflation is a magnitude more volatile than other inflation, especially after the late 1990s. The literature has mostly focused on decreasing inflation volatility (Baele et al., 2015), while we find that the trend of inflation volatility is different for core and energy goods. The core inflation volatility is reduced as the monetary policy mainly targets the core inflation, while the energy inflation becomes even more volatile.

The results are robust to other measures of inflation expectations. The survey of professional forecasts (SPF) are widely used as measures of expected inflation (Ang et al., 2007). In our study, we are interested in the expected inflation for core and energy goods separately. The core inflation in SPF only starts from 2007, leaving us a short sample for study, and energy inflation is not included in SPF. Despite the data limitation, we investigate the survey expectation as a robustness check. Since energy inflation is largely unpredictable, we use the expectation of the headline CPI to extract shocks of both the headline and core inflation. Besides SPF, we also use expected inflation from the the survey of consumers from University of Michigan. Reported in the appendix, the results are robust to different measures of expected inflation.

2.2 Inflation Hedging: Core and Energy

To examine the inflation hedging prepoeties, we specify the regression as follows:

$$r_{i,t}^e = \alpha_i + \beta_\pi^i \varepsilon_{\pi,t} + u_{i,t}, \quad (2)$$

where $r_{i,t}^e$ is the realized nominal return of asset i in excess of the nominal risk-free rate. β_π^i represents how much asset i 's excess return changes with the shocks to inflation and its components. The shocks are extracted from the VAR of equation (1).

The risk-free rate incorporates changes in inflation expectation, but the realized inflation surprise is not included in the pre-determined risk-free rate. Therefore, a perfect inflation hedging asset should one-to-one move with the inflation surprise, i.e., $\beta_\pi^i = 1$. If β_π^i is positive but less than 1, the asset is an imperfect inflation hedge.

2.2.1 The Average Portfolios

We start with the 8 average portfolios on the left hand side and the headline inflation shock on the right hand side. Panel A of Table 2 displays the results. The loadings of the US stock market and world stock market index on the headline inflation are negative but insignificant. Treasuries, agency bonds, and corporate bonds all have significantly negative headline inflation betas. Currencies and commodity futures hedge against headline inflation. The coefficient for the currency portfolio is close to 1, which suggests that the foreign currency is a perfect hedge. The commodity future return moves much more than the headline inflation with a coefficient of 8.59. REITs' headline beta is close to 0 and statistically insignificant. The results in Panel A are consistent with the conventional wisdom that currencies and commodity futures are inflation-hedging assets.

However, a different picture emerges when we examine core and energy inflation separately. In Panel B of Table 2, we report regression results with core and energy inflation

shocks separately. US and international stocks load negatively on core and positively on energy inflation, both statistically significant. This result sheds new light on the ambiguous inflation-hedging property of stocks in the literature, as in Panel A of Table 2. The ambiguity in the sign of the stock’s inflation betas is due to the mixture of core and energy inflation. The negative core beta and the positive energy beta add up to an insignificant loading on the headline inflation. Treasuries, agency bonds, and corporate bonds have negative betas with both core and energy inflation. The REITs’ core and energy betas are similar with stocks. Currencies and commodity futures’ hedging properties against headline inflation mainly come from the energy component, while their core betas are negative and insignificant.

The sharp contrast on inflation hedging properties between the two panels in Table 2 show the importance of decomposing the headline inflation into core and energy components. The average US and international stock, currency, commodity future, and REITs have core and energy betas with opposite signs. The conventional wisdom that stocks, currencies and commodity futures are real assets is incomplete: they only hedge against energy inflation. A long position in none of these 8 asset classes can hedge against the core inflation.

2.2.2 The Full Cross Section

We next run regression (2) for the full set of 38 test portfolios and present the results in Table 3. The results are similar with Table 2. Within stocks, the five industry portfolios have heterogeneous exposures. They are negatively exposed to headline inflation except for manufacturing, but only three betas are significant. On the contrary, stocks’ core betas are all unambiguously negative and statistically significant, while their energy betas are positive and mixed in statistical significance. The three regional international stocks have similar exposures to inflation, as well as similar average returns with U.S. stocks. All Treasury and agency bond portfolios have negative exposures to headline, core, and energy inflation. Corporate bonds load negatively on core inflation and their energy inflation betas are mixed in sign. One possible reason is that the default risk is eased in good economic conditions when the energy price is high.

Carry trade portfolios mostly load negatively on core inflation and positively on energy inflation. High-interest-rate currencies load more negatively on core inflation and more positively on energy inflation. The dollar carry portfolio has a much more negative beta with respect to core inflation than the average currency portfolio. This observation implies that the currency exposure to core inflation shocks depend on the level of interest rate. For commodity futures, energy naturally has a large exposure to energy inflation and so do other commodity future portfolios. But they do not hedge against the core inflation, with

an exception of agriculture whose core beta is positive but statistically insignificant. The three REITs portfolios all have highly significantly negative core betas. The magnitude of these core betas are comparable to those of stocks. REITs are positively exposed to energy inflation, though only the energy beta of the equity REITs is statistically significant.

The findings confirm the conclusion we draw with the 8 average portfolios: exposures to core and energy inflation are fundamentally distinct, especially for the conventional “real” assets.

2.3 Getting to the Core: The Inflation Risk Premium

In the previous section, we show that different asset classes have different exposures to core and energy inflation shocks. In this section, we further explore the cost of hedging against inflation, or the price of these inflation risks. We find that the price of risk of headline and energy inflation are indistinguishable from zero. However, getting to the core inflation, it carries a sizable negative price of risk.

2.3.1 Inflation Risks Across Asset Classes

Our analysis is based on a factor model of average returns,

$$E(r_{i,t}) = \beta'_i \lambda,$$

where λ is the vector of prices of risks. We run a Fama-MacBeth cross-sectional regression of average returns onto asset betas to estimate the price of risks and report the results in Table 4. The price of headline risk is statistically insignificant. With core and energy inflation as separate risk factors, core inflation carries a negative price of risk -1.03 that is significant at 99% confidence interval, while the price of energy inflation risk is positive but insignificant. Assets with higher average returns tend to load more negatively on and are hurt more by core inflation. The cross-sectional fit is superb with an R^2 of 0.98. With 38 test portfolios, we utilize more variations in both average returns and asset betas and find a similar price of core inflation risk -1.07 and an even larger t -statistic. The two sets of test portfolios lead to similar estimates of the price of core inflation risk. In the appendix, we report robust results using the GMM method.

The price of risk estimates uncover the second source of difference between core and energy inflation, the cost of exposure. Investors require a compensation of 1.07% of excess return per annum if an asset increases one unit of exposure to core inflation in absolute value. Notably, nearly all assets in our universe have negative betas and carry core inflation premia. Compensation for energy inflation exposure is the opposite in sign and statistically

insignificant. From a hedging perspective, hedging against core inflation is costly, while the cost of hedging against energy inflation is indistinguishable from zero.

To visualize the result, Figure 2 plots the average excess returns of the 8 average portfolios (the upper panel) and 38 portfolios (the lower panel) against their model predicted expected excess returns using headline inflation as a risk factor only. Both sets of portfolios have very poor model fit. Though the average excess returns for different asset classes vary substantially, the model predicted returns center around zero. This is reflected in the small price of risk estimates for both sets of portfolios.

In Figure 3, we plot the average excess returns against the model predicted expected excess returns using both core and energy inflation as risk factors. The cross-sectional fit improves substantially. For 8 average portfolios, the average realized returns and model implied returns line up perfectly. Even with 38 portfolios, these returns line up nicely with an R^2 of about 0.8. The sharp contrast highlights the value our decomposition in understanding the average returns both within and across asset classes. Negative exposures to core inflation are rewarded with additional returns. To see it more clearly, in Figure 4 and 5, we plot the cross-sectional relation between average excess returns and headline, core, and energy inflation betas for the 38 portfolios. Headline betas do not explain average return differences at all: stocks, bonds, and REITs have similar betas but their average returns differ. The core inflation betas line up well negatively with the average excess returns. The average stock and REITs portfolios have large, negative core betas and the highest returns. Treasuries, agency bonds, and corporate bonds have sizable negative betas and modest returns. Currencies have disperse core inflation betas which line up with their average returns. Commodity futures have small exposures and their returns are relatively low. The pattern between average excess returns and energy inflation betas is quite noisy as well.

This figure shows the importance of using test portfolios from multiple asset classes. While core and energy betas within the same asset class differ, betas across asset classes are more dispersed and in line with their average excess returns. Dispersed betas improve the power of the statistical test.

2.3.2 Inflation Risks Within Each Asset Class

In the analysis above, we include 38 test portfolios from 8 asset classes to maintain a roughly equal number of test portfolios in each asset class so that none of the asset classes dominate in the price of risk estimates. The limitation of the choice is that the number of test portfolios are small when we examine inflation risks within each asset class. Therefore, we expand the test portfolios in each asset class. The expanded test portfolios include 35 stock portfolios,

19 Treasury portfolio, 6 agency bond portfolios, 8 corporate bond portfolios, 17 currency portfolios, 8 commodity future portfolios, 11 REITs portfolios, and 7 international stock portfolios. The 35 stock portfolios include 17 industry portfolios and 18 double-sorted portfolios on size and book-to-market, investment, and profitability. The 19 Treasury portfolios include 7 fixed term portfolios and 12 maturity-sorted portfolios (<6M, 6-12M, 12-18M, 18-24M, 24-30M, 30-36M, 36-42M, 42-48M, 48-54M, 54-60M, 60-120M, >120M). The 6 agency bond portfolios are sorted on maturity: 1-3, 3-5, 5-7, 7-10, 10-15, and >15 years. The 8 corporate bond portfolios are double sorted on credit rating (Aaa-Aa and A-Bbb) and maturity (1-3, 3-5, 5-10, >15 years). The currency portfolios include the 7 portfolios used in the previous analysis plus 4 value-sorted portfolios (Asness et al., 2013; Menkhoff et al., 2017), and 6 dollar beta sorted portfolios (Verdelhan, 2018). For commodity futures, we additionally examine the three main components of the precious metal: gold, platinum, and silver. We include 8 additional REITs portfolios: unclassified, diversified, health care, industrial/office, lodging/resorts, residential, retail, and self-storage. For international stocks, besides the three regional portfolios, we sort MSCI country indices into four portfolios according to the import ratio, defined as the sum of complex good imported and basic goods exported divided by total manufacturing production, following Ready et al. (2017b).

With the expanded set of test portfolios, we examine the price of inflation risk in each asset class. ³Table 5 reports the estimates based on test portfolios from each asset class, the 8 average portfolios, and the full cross section of 38 test portfolios. Strikingly, using test portfolios from different asset classes, we obtain a largely consistent estimate of the price of core inflation risk around -1. In Figure 3, we do see that assets in different asset classes have a largely similar slope between average excess returns and core inflation betas. Therefore, the core inflation risk is priced consistently both within and across asset classes.

2.3.3 Inflation Factor Mimicking Portfolios

Both core and energy inflation are macroeconomic factors that are not traded. It is therefore worthwhile to examine the factor mimicking portfolio returns in the return space. A factor mimicking portfolio is a linear combination of available asset returns, subject to having the same covariance with the macroeconomic factors as the test assets. Factor mimicking portfolios contain the same pricing information as the macroeconomic factors. We construct the factor mimicking portfolios using the Fama-MacBeth approach.

To construct the Fama-MacBeth factor mimicking portfolios, at every quarter, we regress asset returns on inflation factors to obtain their betas. Factor mimicking portfolio weights

³For commodity futures, since previous metal consists of gold, platinum, and silver, we only include the precious metal in the estimation.

are constructed as $(\beta'\beta)^{-1}\beta'$. As a result, a specific factor’s mimicking portfolio has unity exposure to the corresponding factor, and are orthogonal to other factors.

Panels A through C in Table 6 report the mean, t -statistics, and Sharpe ratios of the factor mimicking portfolios constructed using the Fama-MacBeth method. Columns 1-8 use the cross-section of expanded portfolios in each specific asset class. Column 9 uses the 8 average portfolios and column 10 uses the 38 test portfolios. The average return of core inflation mimicking portfolios are negative and statistically significant. The magnitude of average returns are around -1 percent across all asset classes. The average return of headline inflation mimicking portfolios have different signs for different asset classes and the average return of energy inflation mimicking portfolios are mostly indistinguishable from 0. The mimicking portfolio exercise shows that the financial market prices core inflation consistently in a stable way within and across asset classes.

A typical critique of macroeconomic variables as risk factors is the weak identification problem, which arises when different assets have betas that are close to each other. Kleiberger and Zhan (2020) propose a test statistic that diagnoses whether weak identification problem is present. When we use the 8 average portfolios and the cross-section of 38 portfolios, we can strongly reject the presence of weak identification problem with p -value being nearly zero. When we estimate the price of risk asset class by asset class, the estimation is subject to the weak identification problem for stocks, commodities, REITs, and international stocks. Therefore, we highlight the importance of using portfolios from multiple asset classes to achieve a robust estimate of inflation risk premium.

2.3.4 The Inflation Hedging Properties of Conventional Real Assets

Currencies, commodity futures, and real estates are conventionally viewed as inflation-hedging assets, but our previous analysis suggests that they only hedge against energy inflation. It is worth further studying the expanded set of currencies and commodity futures in more detail. In this section, we show that this conclusion applies to all the popular investment strategies that we consider in the expanded set.

Currencies The underlying rationale for currencies to hedge inflation risk is the purchasing power parity (PPP). When US experiences a higher inflation, the purchasing power of dollar declines and the foreign currency appreciates. The PPP is a useful benchmark for exchange rates at least in the long run (Rogoff, 1996; Asness et al., 2013; Menkhoff et al., 2017).

Table 7 reports the inflation betas for additional currency portfolios. The value portfolios are sorted on the deviation from PPP (Menkhoff et al., 2017). Portfolio 1 contains currencies that are most undervalued relative to their real exchange rates 5 years before. Undervalued

currencies will revert back to the fundamental values with expected appreciations. The four value portfolios have positive headline inflation betas but they mostly come from energy inflation. All four portfolios have negative core betas, though statistically insignificant.

Verdelhan (2018) construct currency portfolios sorted on dollar betas, interacted with the sign of average forward discount. From Portfolio 1 to Portfolio 6, loadings on dollar exchange rate increase. Currencies that have higher dollar betas have more negative core inflation betas .

Commodities Commodity futures are also conventional inflation-hedging assets. As is shown in Table 3, they only hedge against energy inflation. Kogan and Konstantinovskiy (2008) also find that commodities do not hedge core inflation. Among commodities, the precious metal, especially gold, is the most well-accepted assets to preserve value and often thought to hedge against macroeconomic declines. However, this is not true with core inflation. Table 7 shows that gold and platinum have positive core inflation betas that are indistinguishable from zero but they strongly hedge against energy inflation. These precious metal futures have relatively low returns and high volatility. Our results share the same spirit with the finding by Barro and Misra (2016) that gold has a negligible covariance with real macroeconomic risk factors.

REITs Housing is commonly viewed as a real asset class. Leombroni et al. (2020) show that inflation makes housing more attractive than equity. Moreover, a large portion of core inflation is shelter including owners' equivalent rent of residences and rent of primary residence. As of December 2019, the weights of core and shelter in CPI are 79.2% and 33.5%. Therefore, it is natural for investors to consider real estate investment as a good way to hedge against core inflation. Because of the illiquidity of real estate, we focus on REITs.

As is shown in Table 2, REITs behave similarly with stocks: it is strongly negatively exposed to core inflation and positively exposed to energy inflation. The two exposures largely offset with each other so it has an insignificant headline inflation beta. Table 7 expands the test assets to REITs in different sectors. The sector portfolios behave quite consistently to the average REITs portfolio in term of headline, core, and energy betas.

Why cannot REITs hedge against core inflation? The specific component of shelter inflation and the average REITs return have a very low correlation of -0.07. Unlike the shelter inflation that reflects the change in single-period rents, REITs returns depend on the future rental income and the discount rate. Because of this difference, REITs is closer to stocks than to shelter inflation.

TIPS Treasury Inflation Protected Securities (TIPS) are typically considered as real assets as their nominal payoffs increase with realized inflation. We use the most recent available from 2001 and confirm this argument, with results shown in Table 7. TIPS index’s headline inflation beta is 0.64, implying that it imperfectly hedges against the headline inflation. However, its exposure to core inflation is 4.54, which is much larger than 1. TIPS return increases by 4.54 percent in response to 1 percent increase in core inflation rate. The TIPS index does not hedge against energy inflation.

2.4 Time-varying Exposures and Prices of Risk

2.4.1 Time-varying Exposures

In our previous analysis, we examine the unconditional risk exposure and price of risks. Next, we consider how risk exposures and prices of risk vary over time.

Stock-bond correlation changed sign at the turn of the century (Campbell et al., 2009, 2019; Song, 2016). These studies find a structural break in the dynamic behavior of economic fundamentals and/or changes in the monetary policy regime. Following these studies, we split the sample into two subsamples at the structural break: the first from 1963 to 1999 and the second from 2000 to 2019. We notice that the relative importance of core and energy inflation changed over time. As we show in Figure 1, core inflation is much more volatile in the early sample and becomes smooth after the mid 1980s. After the late 1990s, energy inflation becomes volatile with large spikes. Therefore, core inflation’s contribution to the overall inflation risks is lower in the second subsample, while energy inflation’s contribution increases. Because of the change of relative contribution and the opposite signs of stocks’ core and energy inflation betas, stocks’ exposures to headline inflation may switch signs.

Table 8 reports the inflation exposures in the two sub-samples. The stock’s core beta is stable over time, but its energy beta increases from zero before the 2000s to being significantly positive after 2000s. Overall, the stock’s headline beta switches from negative to positive. The bonds’ exposures to core are more negative before the 2000s, and their exposures to energy are more negative after the 2000s. Currencies and commodity futures hedge against energy inflation more strongly in the second subsample, and the headline exposures are attributed mostly to energy inflation. REITs and international stocks have a pattern similar to U.S. stocks. Panel C provides the p -value of statistical tests on whether the betas change across the two subsamples. Core betas are stable across asset classes, while headline and energy inflation betas show significant structural changes.

To fully explore the time variation, we use a local least square estimator following Adrian

et al. (2015). At any time t , the beta estimate follows

$$[\hat{\alpha}(t), \hat{\beta}(t)']' = \arg \min_{(\alpha, \beta)} \sum_{i=1}^n \frac{K((t_i - t)/h_k T)}{h_k T} (r_{i,t_i}^e - \alpha - \beta' \varepsilon_{\pi,t_i})^2$$

where $K(z) = 1/\sqrt{2\pi} \exp(-z^2/2)$ is a Gaussian density kernel and h_k is a bandwidth. We choose the bandwidth to be 0.05. In Figure 6, the betas slowly evolve over time. Compare our subsample analysis with the kernel estimates, although our simple two-regime approach cannot study all the variations, it largely captures the key structural break in a concise way.

2.4.2 Time-varying Prices of Risk

As core exposures do not vary much over time, we find that the price of core risks are also stable in both subsamples. Panel D of Table 8 shows that the price of core risks are negative and similar across the two subsamples. The prices of headline risks are insignificant in both samples. Energy inflation has a positive price of risk before the 2000s.

Even though the price of core risk does not show a structural change, it might show medium frequency variation with economic conditions. We specify the stochastic discount factor M_{t+1} and the price of risk λ_t as:

$$\frac{M_{t+1} - E_t M_{t+1}}{E_t M_{t+1}} = -\lambda_t \varepsilon_{\pi,t+1},$$

where $\lambda_t = \Sigma_u^{-\frac{1}{2}}(\lambda_0 + \lambda_1 F_t)$. Under this specification, the expected excess return of asset i can be expressed as $E_t R_{t+1}^i = \beta_i'(\lambda_0 + \lambda_1 F_t)$.

The prices of core and energy inflation risks are both specified as a linear function of economic variable F_t . We choose F_t as the 10-year-3-month term spread and estimate the conditional asset pricing models following the three-step procedure proposed by Adrian et al. (2015). First, we extract the unexpected components of the inflation risk factors. Second, we regress asset returns onto the risk factors as well as lagged values of F_t . Third, λ_0 and λ_1 are constructed using the regression coefficients in the second step. We refer the readers to Adrian et al. (2015) for a detailed description of the method.

We find that the price of core inflation risk decreases with the term spread. We obtain an intercept λ_0 of -0.94 with an t -statistic of -1.70, and a slope λ_1 of -0.52 with an t -statistic of -1.85. The price of energy inflation risk does not vary with the term spread.

2.4.3 Time-varying Stock-Bond Correlation

Interestingly, the time-varying core and energy betas can help explain the time varying correlation between stock and bond returns. In our sample, the correlation between the stock market return and the average Treasury return is 0.32 in the first subsample and -0.55

afterwards. Our decomposition of core and energy provides a new economic interpretation of the changing correlation between the real and nominal sides quantities.

From the perspective of our inflation decomposition, the nominal-real covariance switches signs because of the changing relative weights of core and energy in headline inflation volatility. The attribution of time-varying stock-bond correlation to changing volatility of fundamental economic shocks are similar in spirit to Baele et al. (2010), who study the switch of regimes in the volatility of different economic shocks. We specifically focus on the changing relative volatility of core and energy inflation. In the first subsample, both stocks and bonds expose negatively to core and headline inflation, as the core inflation is the dominant force. Therefore, stocks and bonds comove positively. In the second subsample, core inflation is muted while energy emerges as the dominant force, leading to a positive stock exposure to energy and headline inflation. Since bonds still have negative inflation exposure, the stock-bond correlation turns negative.

We can attribute the covariance of the stock and bond returns to the covariance driven by inflation shocks and that by the residuals of returns after projected on inflation shocks. Before 2000, 35% of the positive covariance is driven by inflation shocks. After 2000, the inflation contribution is 23%. While inflation can explain a sizable amount of the switching signs, the residuals are still correlated potentially due to other previously documented mechanisms. Campbell et al. (2019) show that the covariance between inflation and real activity switches signs around the turn of the twenty-first century, which affects the changing stock-bond return correlation. Song (2016) investigates the monetary/fiscal policy forces behind this time-varying correlation.

In sum, core exposure and price of risk are stable over time. There is interesting time variation in energy inflation exposures of different assets, which contributes to changes in their headline inflation exposure. These shifting exposures to inflation risk provide a new perspective on the changing sign of stock-bond return correlation, which has attracted much attention in the macro finance literature.

2.5 Other Macroeconomic Risk Factors

Previous analysis shows that core inflation risks are priced in a wide range of asset classes. Is the core inflation risk simply reflecting information in other known macroeconomic risks? This idea goes back to Fama (1981) who argues that stocks are negatively exposed to inflation because inflation is countercyclical and stock prices are procyclical. In this section, we include a set of macroeconomic factors suggested in the asset pricing literature to examine whether the price of core inflation risk is driven out by these macroeconomic factors. The

macroeconomic factors we consider include the consumption growth rate, durable consumption growth rate (Yogo, 2006), industrial production growth rate (Chen et al., 1986), payroll growth rate, unemployment growth rate, and the long run and short-run consumption growth news constructed by Hansen et al. (2008), unfiltered consumption growth (Kroencke, 2017), and capital share growth (Lettau et al., 2019).

We re-estimate the first-step regression including the macroeconomic factors. The inclusion of macroeconomic factors control for cyclicalities and may change the inflation betas and the price of risk estimates. Estimates of price of risks are reported in Table 9. In untabulated results, we find that the first-stage estimates of inflation betas are robust to the macro factor controls. None of these macroeconomic factors can drive out the negative risk premium of core inflation. The price of core inflation risk estimates remain similar both in magnitude and statistical significance across all specifications, and none of the macroeconomic factors is significantly priced in our portfolios across asset classes.

2.6 Cash Flow News and Discount Rate News

We further study the inflation exposures of economically distinct cash flow (CF) and discount rate (DR) news components of stock returns.

First, we directly study the relation between inflation and the real growth. It is well documented that inflation has negative impacts on future real growth (Piazzesi and Schneider, 2006; Bansal et al., 2005). Table 10 confirms the inflation nonneutrality that higher headline inflation is associated with lower real growth of GDP, consumption, and dividend. The effects on consumption are the strongest, while those on GDP and dividend are weaker. When we separate core and energy inflation, they have distinct effects. The coefficients are negative and significant for core inflation but are close to zero and insignificant for energy inflation. The core coefficients on dividends are more than twice as large as the headline coefficients. Therefore, the negative inflation effect on real growth is concentrated in core inflation.

Next, we study the CF and DR news components in stock returns. We perform standard return decomposition by estimating a VAR(1) and extract CF and DR news (Campbell, 1991). The VAR includes the real asset return, the price-dividend ratio, the real risk-free rate, and the headline inflation. We apply the method and estimate the news of the stock market returns, industry portfolios, value-sorted portfolios, international stock indices, and REITs. Then, we estimate the risk exposures of CF and DR news to core and energy inflation in bivariate regressions. Table 11 presents the results. The core exposure of CF news is significantly negative, consistent with the direct evidence on growth measures presented

above. The core exposure of DR news is significantly positive. Since returns are negatively associated with DR news, both news contributes to the negative core exposure of stock returns. Motivated by this fact, the model that we propose later features both CF and DR channels. The energy betas of stocks are mainly from the DR news. We obtain similar patterns in an analysis of the cross-section of industry stock portfolios. Interestingly, the cash flow news of growth stocks load more negatively on core inflation than those of value stocks. In contrast, the discount rate news of value stocks load more on core inflation. The international stocks and REITs share similar patterns as US stocks. Different from stocks, the energy loadings of REITs mainly come from cash flow news.

2.7 Price Stickiness

What is the economic mechanism that makes core and energy inflation different? In this section, we explore the mechanism by looking at other categorization of inflation risks.

Core and energy goods and services differ greatly in price stickiness. Energy prices are flexible while core good prices are more sticky. Therefore, we directly look at the inflation of goods and services with flexible and sticky prices. The data are from the Federal Reserve Bank of Atlanta. The sticky price inflation is a weighted basket of sticky-price goods. These goods account for 70% of the whole basket and their prices change relative slowly every 5 to 26 months. The flexible price goods account for 30% and their prices change every 1 to 4 months. The sticky price items are mostly core goods, such as personal care fees, motor vehicle fees, water, sewer, and trash collection services, medical care services, etc. The flexible price items include motor fuel, car and truck rental, fresh fruits and vegetables, etc, which are mostly food and energy goods. The sticky and core inflation share similar properties. Shocks to the core and sticky inflation have a correlation of 0.85, and shocks to the energy and flexible inflation have a correlation of 0.91. When examining inflation risks, we confirm that the asset exposures to sticky and flexible inflation risks and their prices of risk resemble the properties of core and energy inflation. Table 12 reports the results of inflation exposures for 8 average portfolios and the price of risk estimates for both 8 and 38 portfolios. This result indicates that the economic mechanism behind the difference between core and energy inflation could be that they differ in price stickiness.

Motivated by this fact, we develop a model with a mechanism of price stickiness. The core goods has higher price stickiness than energy goods and core inflation negatively comoves with economic conditions.

2.8 Expected and Unexpected Inflation

In the previous analysis, we examine what assets hedge against unexpected inflation shocks. When investor consider inflation hedging, they often do not distinguish the expected and unexpected inflation (Bekaert and Wang, 2010). We consider this setting and regress the realized excess return of asset i onto the realized level of inflation (headline, core, and energy) as follows:

$$r_{i,t}^e = \alpha_i + \beta_{level}^i \pi_t + u_{i,t}, \quad (3)$$

where β_{level}^i represents the comovement between excess return and inflation level.

Further, we decompose the level of inflation into the expected and unexpected components, with the expected inflation defined as $E_{t-1}\pi_t = \pi_t - \varepsilon_{\pi,t}$. We run the following regression:

$$r_{i,t}^e = \alpha_i + \beta_e^i (E_{t-1}\pi_t) + \beta_u^i \varepsilon_{\pi,t} + u_{i,t}. \quad (4)$$

In this specification, β_e^i represents how much asset i 's excess return changes with the expected inflation. Since risk-free rate reflects the expected inflation, a zero β_e^i indicates that asset i has the same hedging property against expected inflation as the risk-free rate. If β_e^i lies between -1 and 0, asset i is an imperfect hedge against expected inflation.

Table 13 Panel A reports estimates of equation (3) and (4) for the headline inflation. β_{level} are qualitative similar to β_u , but the magnitude of β_{level} 's for the fixed-income securities and commodity futures are smaller. β_e are not significantly different from zero except for corporate bonds. Therefore, most asset classes can perfectly hedge expected inflation. The results illustrate that hedging expected and unexpected inflation are distinct phenomena. The overall β_{level} includes both expected and unexpected inflation hedging.

Panel B report the estimates for core and energy inflation. The results of core inflation share the same message as the headline inflation that β_{level} mixes the expected and unexpected inflation. These assets hedge against the expected core inflation, while it is very difficult to hedge core shocks. We do not include the energy inflation expectation as it is fairly transitory. Exposures to energy inflation, β_{level} are similar with energy shock exposures β_u .

In the appendix, we report the asset pricing test results for the 8 average portfolios with respect to shocks to expected core inflation. The shock to expected core inflation is constructed as $A\varepsilon_{\pi,t}$ and it has a high correlation of 0.90 with the core inflation shock. All results are very close to those with core inflation shocks.

3 The Model

In this section, we propose a two-sector New Keynesian model that rationalizes the empirical findings. We intend to provide a stylized model that includes a minimum set of ingredients to accommodate our empirical findings. Bodenstein et al. (2008) use a model similar to ours to study optimal monetary policy. For brevity, we only present essential information about the model in the main text, and details are relegated to the appendix.

3.1 Model Setup

3.1.1 Households

Representative households derive utility from a consumption basket C_t , which consists of the consumption of core goods $C_{c,t}$ and energy goods $C_{e,t}$. The consumption basket is the CES aggregation of the two goods: $C_t = [\alpha_c C_{c,t}^{(\phi-1)/\phi} + (1 - \alpha_c)(\exp(\delta_t)C_{e,t})^{(\phi-1)/\phi}]^{\phi/(\phi-1)}$. α_c is the weight on core consumption. ϕ is the elasticity of substitution between core and energy goods. A higher value of ϕ means that core and energy goods are more substitutable. δ_t is an exogenous shock to the relative demand of energy. Larger δ_t means a relatively higher demand for the energy good.

Households have CRRA utility over the consumption basket and disutility from labor supply. They maximize their lifetime utility subject the budget constraint as follows.

$$\max_{C_{c,t}, C_{e,t}, \eta_t, N_t} E \sum_{t=0}^{\infty} \beta^t \left[\frac{C_t^{1-\gamma} - 1}{1-\gamma} - \frac{N_t^{1+\varphi}}{1+\varphi} \right],$$

$$s.t. : P_{h,t} P_t C_t + \eta_t = W_t N_t + P_{e,t} P_t C_{e,t} + \eta'_{t-1} R_t.$$

The core good is the numeraire and its real price equal 1. $P_{h,t}$ is the real price of the consumption basket (headline price), and $P_{e,t}$ is the real price of energy good. P_t is the nominal price of the core good, W_t is the nominal wage, and Π_t is the profit from firms. η_t is a vector of the asset holding value, and R_t is a vector of corresponding asset returns. The specification includes a generic set of assets, including the nominal risk-free rate asset whose return is $1 + i_{t-1}$ and the return of a claim to all firms in the economy.

3.1.2 Production

The core good consists of a continuum of varieties $C_{c,t}(i)$, which are aggregated through a CES aggregator: $C_{c,t} = (\int_0^1 C_{c,t}(i)^{(\varepsilon_t-1)/\varepsilon_t} di)^{\varepsilon_t/(\varepsilon_t-1)}$. ε_t is the elasticity of substitution across varieties. Each variety $i \in [0, 1]$ of core goods is produced by a firm in a monopolistic competitive environment. The desired markup $\exp(\mu_t) \equiv \varepsilon_t/(\varepsilon_t - 1)$ fluctuates exogenously.

This is a modeling device to capture the variation of inflation that are independent of other real macroeconomic and policy shocks. Smets and Wouters (2007) find that markup shocks are the dominant drivers of inflation, while other shocks (e.g. total factor productivity, investment, monetary and fiscal shocks) explain only a minor fraction of inflation. Therefore we abstract away these other shocks in our model.

The production technology of each variety of core good is $C_{c,t}(i) = N_t(i)^{1-\alpha}$. The production technology has decreasing returns to scale. In each period, firms face price rigidity and may adjust their prices with probability $1 - \theta$. Firms set optimal price facing the demand schedule implied by monopolistic producers.

The quantity of energy good, $C_{e,t}$, is exogenously endowed in each period.

3.1.3 Monetary Policy

The central bank follows the Taylor rule:

$$i_t = \bar{i} + \phi_\pi \pi_t. \quad (5)$$

The nominal interest rate responds to current inflation of the core goods. $\phi_\pi > 1$ indicates that when current inflation is high, central bank raises the nominal rate more than one-for-one to fight against the inflation, and thus the real interest rate increases. Through the Taylor rule, asset prices will incorporate expectations of future monetary policy responses to inflation. To focus on inflation, we omit the response to output and the monetary policy shock.

3.1.4 Exogenous Processes

There are three exogenous processes: the markup, energy endowment, and relative energy demand. The three exogenous shocks all follow first-order autoregressive processes.

$$\mu_t = (1 - \rho_\mu)\bar{\mu} + \rho_\mu\mu_{t-1} + \sigma_\mu\varepsilon_{\mu,t}, \quad (6)$$

$$\log C_{e,t} \equiv c_{e,t} = (1 - \rho_e)\bar{c}_e + \rho_e c_{e,t-1} + \sigma_e\varepsilon_{e,t}, \quad (7)$$

$$\delta_t = \rho_\delta\delta_{t-1} + \sigma_\delta\varepsilon_{\delta,t}. \quad (8)$$

3.2 Equilibrium Characterization

The model can be solved analytically after we approximate the dynamic economic system with log-linearization. Lower-case letters refer to the log of each variable. Macroeconomic variables are deviations from the deterministic steady state.

We make the following assumption on the parameters of the model.

Assumption 1 *The elasticity of substitution between core and energy is greater than unity, but less than the intertemporal elasticity of substitution, i.e. $1 < \phi < \frac{1}{\gamma}$.*

Results collected in the lemmas below are useful for understanding the model.

Lemma 1 *(Energy price) The real energy price is equal to the ratio of core and energy goods, adjusted by the relative demand shock, i.e.:*

$$p_{e,t} = \left(1 - \frac{1}{\phi}\right) \delta_t + \frac{1}{\phi}(c_{c,t} - c_{e,t}). \quad (9)$$

Intuitively, energy demand raises energy price and energy supply lowers energy price.

Lemma 2 *(Consumption basket and headline price) Households' consumption basket is a weighted average of core and energy consumption, adjusted by the energy demand shock. The real headline price is proportional to real energy price after the adjustment of energy demand shock.⁴*

$$c_t = \hat{\alpha}_c c_{c,t} + (1 - \hat{\alpha}_c)(c_{e,t} + \delta_t), \quad (10)$$

$$p_{h,t} = \frac{1 - \hat{\alpha}_c}{\phi}(c_{c,t} - c_{e,t} - \delta_t). \quad (11)$$

Lemma 2 states that core and energy consumption and the energy demand shock can effectively raise the consumption basket. Given consumption of core and energy goods, the energy demand shock lowers the headline price because less energy is needed to achieve the same level of consumption basket.

Lemma 3 *(Marginal utility of core goods) Under Assumption 1, the marginal utility of core goods, $MU_{cc,t} = \alpha_c C_t^{\frac{1}{\phi} - \gamma} C_{c,t}^{-\frac{1}{\phi}}$, increases with energy supply and demand $c_{e,t}$ and δ_t .*

Assumption 1 states that core and energy goods are complementary, so that the marginal utility of core goods increases with the energy good consumption. $\phi < 1/\gamma$ implies that the marginal utility increase is strong enough to dominate the incentive to postpone consumption into the future. The following proposition summarizes the core output and inflation's loadings on the three state variables.

Proposition 1 *(Core output and inflation) The core consumption and core inflation can be expressed as linear functions of the three state variables: markup, energy supply, and energy demand.*

$$C_{c,t} = c_{c,\mu} \mu_t + c_{c,e} c_{e,t} + c_{c,\delta} \delta_t, \pi_t = \pi_\mu \mu_t + \pi_e c_{e,t} + \pi_\delta \delta_t.$$

⁴ $\hat{\alpha}_c = \frac{\alpha_c}{\alpha_c + (1 - \alpha_e) \left(\frac{c_e}{c_c}\right)^{\frac{\phi-1}{\phi}}}$ is a constant dependent on steady-state consumption.

The signs of the loadings are given by:

$$\begin{aligned} c_{c,\mu} < 0, c_{c,e} > 0, c_{c,\delta} > 0, \\ \pi_\mu > 0, \pi_e > 0, \pi_\delta > 0. \end{aligned}$$

The formulae for these coefficients are shown in the appendix. The signs of core output and inflation loadings on the markup shock $c_{c,\mu}, \pi_\mu$ are similar with standard New Keynesian models. A positive markup shock increases the price charged by core firms, so the nominal price of the core good increases and core production is reduced due to the downward sloping demand curve.

The loadings of core output and inflation on the energy supply shock reflect the shock's effects on the core supply and demand. As in Lemma 3, the increased energy supply increases the marginal utility of core and thus pushes down the wage and increases the aggregate supply of core goods. On the demand side, the increased the marginal utility of the core good raises the core demand. Therefore, energy supply shock is expansionary, i.e., $c_{c,e} > 0$. The loading of core inflation on the energy supply shock depends on the relative importance of demand and supply forces. It can be shown that when the demand force dominates and core inflation increases with energy supply, i.e., $\pi_e > 0$.

We notice that the energy supply and demand shocks have identical effects on the core output and inflation from Lemma 2. A positive energy demand shock increases core output and inflation. $c_{c,\delta} > 0, \pi_\delta > 0$.

3.3 Energy Inflation and Headline Inflation

The nominal energy inflation is the change of real price of energy plus the inflation of core goods.

$$\pi_{t+1} + \Delta p_{e,t+1} = -p_{e,t} + \left(\pi_\mu + \frac{1}{\phi} c_{c,\mu} \right) \mu_{t+1} + \left(\pi_e + \frac{1}{\phi} (c_{c,e} - 1) \right) c_{e,t+1} + \left(\pi_\delta + \frac{1}{\phi} (c_{c,\delta} + \phi - 1) \right) \delta_{t+1} \quad (12)$$

Since $\pi_\mu, c_{c,\mu} < 0, \pi_\mu + \frac{1}{\phi} c_{c,\mu} < 0$. A positive markup shock lowers energy inflation.

The energy demand and supply shocks affect energy inflation both directly and indirectly. The direct effect is negative for energy supply shock and positive for energy demand shock, holding core output and inflation fixed. The indirect effects work through core output and inflation: both shocks raise core output and inflation, which in turn translates into higher energy inflation. The direct effect dominates the indirect effect when the share of energy good $1 - \hat{\alpha}_c$ is relatively small. .

The headline inflation is expressed as follows:

$$\pi_{h,t} = \pi_t + \Delta p_{h,t} = \pi_t + \frac{1 - \hat{\alpha}_c}{\phi} \Delta(c_{c,t} - c_{e,t} - \delta_t)$$

The exposure of headline inflation to the markup shock is $\pi_\mu + \frac{1 - \hat{\alpha}_c}{\phi} c_{c,\mu} < 0$. The sign of headline inflation's loadings on energy supply and demand shocks is ambiguous, depending on how the energy supply and demand shocks affect core inflation and consumption.

3.4 Asset Pricing Implications

In this section, we use the Euler equation of this model to price assets including core stocks, nominal bonds, currencies, and commodity futures. As core inflation is mainly driven by the markup shock, we interpret the loadings of SDF and asset returns on the markup shock as the loadings on core inflation. For energy inflation shocks, it is a weighted average of loadings of energy demand and supply shock, which we will show explicitly.

3.4.1 Stochastic Discount Factor and the Price of Risk

We consider the SDF in real terms in the unit of consumption basket.

Proposition 2 (*The SDF and the price of risk*) *The log stochastic discount factor (in real terms, in the unit of consumption basket) m_{t+1} is expressed as follows:*

$$m_{t+1} = m_\mu(1 - \rho_\mu)\mu_t + m_e(1 - \rho_e)c_{e,t} + m_\delta(1 - \rho_\delta)\delta_t - \lambda_\mu\sigma_\mu\varepsilon_{\mu,t+1} - \lambda_e\sigma_e\varepsilon_{e,t+1} - \lambda_\delta\sigma_\delta\varepsilon_{\delta,t+1}$$

where the signs of the coefficients are are:

$$m_\mu < 0, m_e > 0, m_\delta > 0,$$

$$\lambda_\mu < 0, \lambda_e > 0, \lambda_\delta > 0.$$

When there is a positive markup shock, core consumption decreases and the price of risk λ_μ is negative. Therefore, core inflation has a negative price of risk.

For either energy demand or supply, a positive shock increases the consumption basket so that the marginal utility of the consumption basket is lower. Both shocks have positive prices of risk. Ignoring the indirect effect of energy shocks on energy price through core consumption and core inflation, we obtain the following expression for the price of energy inflation risk:

$$\lambda_{energy} \propto -\frac{1}{\phi}\lambda_e\sigma_e^2 + \frac{\phi - 1}{\phi}\lambda_\delta\sigma_\delta^2.$$

There are two offsetting forces determining the price of energy inflation risks, one from energy supply $-\frac{1}{\phi}\lambda_e\sigma_e^2$, and the other from energy demand $\frac{\phi - 1}{\phi}\lambda_\delta\sigma_\delta^2$. If the energy demand dominates energy supply in driving the energy inflation, the price of energy inflation is

positive. Otherwise, the price of energy inflation is negative. The offsetting forces helps us understand why it is hard to identify a significant price of energy inflation risk in the data.

When we discuss asset returns in some asset classes, especially bonds, we need to use the nominal SDF. The nominal SDF $m_{t+1}^{\$}$ is expressed as $m_{t+1}^{\$} = m_{t+1} - (\pi_{t+1} + \Delta p_{h,t+1})$, where $\pi_{t+1} + \Delta p_{h,t+1}$ is the headline inflation. If inflation is neutral and does not affect the real SDF, the nominal price of inflation (and all its components) should be 1. Any deviation is caused by the effect of inflation shocks (both core and energy) on the real economic quantities.

3.4.2 Core Stock Returns

A core stock is a claim to the dividends, which equals core output net of labor cost. We express the dividend as a log-linear function of the three exogenous state variables.

Proposition 3 (*Core stock return*) *When the steady state level of the markup $\bar{\mu}$ is sufficiently large, i.e., $\exp(-\bar{\mu}) < \frac{1}{(1-\alpha)(\gamma + \frac{\varphi+1}{1-\alpha})}$, the real core stock return $r_{s,t+1}$ is expressed as an affine linear function of the three state variables:*

$$r_{s,t+1} = r_{s0} + r_{s,\mu}\mu_{t+1} + r_{s,e}c_{e,t+1} + r_{s,\delta}\delta_{t+1}. \quad (13)$$

We can determine the signs of the coefficients as follows:

$$r_{s,\mu} < 0, r_{s,e} > 0, r_{s,\delta} > 0.$$

Core stock returns decrease with a positive markup shock, a negative energy supply shock and a negative energy demand shock.

The loadings of core stock returns on the three shocks are intuitive. Core stock returns decline with a positive markup because the markup shock is contractionary. For energy demand and supply shocks, both of them are expansionary, so core stock returns increase with positive shocks on energy supply and demand. Energy demand and supply shocks affect energy inflation in opposite ways. As in the previous section, we can write the loadings of core stock returns on energy inflation as

$$\beta_{s,energy} \propto -\frac{1}{\phi}r_{s,e}\sigma_e^2 + \frac{\phi-1}{\phi}r_{s,\delta}\sigma_\delta^2$$

The sign of the loadings of core stock return on energy inflation depends on whether supply or demand shock is dominant in determining the energy inflation. Our empirical evidence of positive $\beta_{s,energy}$ suggests that energy demand shocks are the main drivers of energy prices.

3.4.3 Nominal Bond Returns

In this section, we calculate the nominal return to long-term bonds. We focus our discussion in default-free Treasuries and do not discuss credit risk. To calculate the long-term nominal bond returns, we need to use the nominal SDF $M_{t+1}^{\$}$. Here, we consider a two-period bond for an analytical solution as in the following proposition.

Proposition 4 *Denote $r_{b,t+1}$ be the $t+1$ -realized holding-period return of a two-period long-term bond issued at time t , it is an affine linear function of the three state variables:*

$$r_{b,t+1} = r_{b,0} + r_{b,\mu}\mu_{t+1} + r_{b,e}c_{e,t+1} + r_{b,\delta}\delta_{t+1} \quad (14)$$

The loadings and their signs are as follows:

$$r_{b,\mu} < 0, r_{b,e} < 0, r_{b,\delta} < 0$$

Nominal bond returns decrease with a higher markup, a higher energy supply, and a higher energy demand.

The exposure of long-term bond return to all three shocks are negative. When there is a positive markup shock, consumption goes down and bond price decreases. Moreover, the contemporaneous and future inflation makes nominal bond less attractive so that the bond price drops.

The positive energy shock (either demand or supply) has two effects on the nominal bond return. First, it raises the consumption of the basket. This effect increases the bond price. Second, it raises the inflation expectations and bond price decreases. As shown in the proof in the appendix, the second effect dominates, so that nominal bond returns decrease with a positive energy shock.

As in our analysis for the SDF and core stocks, bond returns' energy inflation beta is a weighted average of their betas on energy supply and demand shocks. When energy demand shocks are dominant, nominal bond returns comove negatively with energy price. In the data, nominal bonds are indeed negatively exposed to energy inflation, so the bond market evidence reaffirms that energy demand plays a dominant role in driving energy prices.

3.4.4 Currency Returns

Now, we consider the foreign currency returns. Assume the financial market is complete, the real exchange rate is equal to $\Delta q_{t+1} = m_{t+1}^* - m_{t+1}$. Holding the foreign SDF fixed, foreign exchange rate moves in the opposite direction to m_{t+1} . Therefore we have the following proposition:

Proposition 5 (*Foreign currency returns*) Denote $r_{fx,t+1}$ the nominal return to a long position in a foreign currency that is realized at time $t + 1$. We can write it as an affine linear function of the three state variables:

$$r_{fx,t+1} = r_{fx,0} + \lambda_\mu \mu_{t+1} + \lambda_e^{\$} c_{e,t+1} + \lambda_\delta^{\$} \delta_{t+1}.$$

where $\lambda_\mu^{\$} < 0$, and the sign of $\lambda_e^{\$}$ and $\lambda_\delta^{\$}$ are ambiguous, depending on the relative strength of three forces: the change of real SDF m , the change of headline relative price p_h , and the inflation rate of core goods π .

A positive supply shock increases the real SDF and depreciates the foreign currency, while a nominal inflation appreciates the foreign currency. Combine the two effects, the real exchange rate effect dominates the nominal effect so that the foreign currency loads negatively on the markup shock. A positive energy shock has multiple effects on foreign currencies. First, the real SDF decreases ($\lambda_e > 0$) and the real foreign exchange rate appreciates. Second, a positive energy shock is associated with a lower relative headline price p_h . Third, inflation rate of core goods increases with the energy shock $\pi_e > 0$. We cannot decide the sign of changes in nominal price of headline goods, so that the loading of nominal exchange rate is ambiguous and depends on the parameters. Particularly, the magnitude of relative headline price change depends on the substitutability between goods ϕ . If ϕ is relatively large and the two goods are more substitutable, the change in relative price will be smaller and the foreign currency's loading on energy shocks are more positive.

3.4.5 Commodity Future Returns

Finally, we derive the price of commodity futures and its exposure to the three fundamental shocks. Denote f_t the log price of commodity future.

Proposition 6 (*Commodity future returns*) The price of commodity futures is expressed as $f_t = f_0 + f_\mu \mu_t + f_e c_{e,t} + f_\delta \delta_t$, where

$$f_\mu < 0, f_e < 0, f_\delta > 0.$$

Proposition 6 is very intuitive. Under both energy supply and demand shocks, commodity future returns move in the same direction as the energy inflation so that commodity futures have unambiguously positive loadings on energy inflation shocks. The model also implies that commodity future has negative exposure to the markup shock, because higher markup reduces core production and makes core good more scarce. In the data, the exposure of commodities to core inflation is very poorly estimated and it is hard for us to detect this feature with noisy data.

3.5 Extension: Heterogeneous Agents

Our stylized model implies the consumption-based CAPM. One implication is that inflation is not an additional risk factor if a well-measured aggregate consumption growth is included. However, in the empirical section, we find a significant core inflation risk premium after controlling for various consumption risk measures.

Besides the consumption measurement issue, we discuss a theoretical possibility that inflation has heterogeneous effects on different agents. In the appendix, we extend our model by introducing two agents: workers and shareholders. Workers supply labor and only trade goods in the spot market without access to the financial market. Shareholders hold and price financial assets. As a result, inflation affects asset prices through shareholders' consumption but is disconnected from the aggregate consumption. We show in the appendix that the propositions on stochastic discount factors and asset risk exposures are preserved in the extended model.

4 Conclusion

In this paper, we study the inflation hedging properties of different asset classes and the price of inflation risks in the asset market. We decompose the headline inflation into core, food, and energy and show they have distinct volatilities and persistence. While stocks' exposures to headline inflation are insignificant and currencies, commodities, and REITs hedge headline inflation, things look different after our decomposition. Conventional real assets of stocks, currencies, commodity futures, and REITs only hedge against the energy inflation. We estimate the price of core and energy risks both within and across asset classes. We find that only core inflation carries a negative premium and the magnitude is consistently estimated within and across asset classes. We develop a two-sector New Keynesian model to accommodate our empirical findings. Through the lens of our model, the evidence from asset prices suggests that energy demand is the dominant driver of energy prices.

References

- Adrian, T., R. K. Crump, and E. Moench (2015, November). Regression-based estimation of dynamic asset pricing models. *Journal of Financial Economics* 118(2), 211–244.
- Ajello, A., L. Benzoni, and O. Chyruk (2019). Core and 'Crust': Consumer Prices and the Term Structure of Interest Rates. *The Review of Financial Studies* 00(0), 47.
- Ang, A., G. Bekaert, and M. Wei (2007). Do macro variables, asset markets, or surveys forecast inflation better? *Journal of monetary Economics* 54(4), 1163–1212.
- Ang, A., G. Bekaert, and M. Wei (2008). The Term Structure of Real Rates and Expected Inflation. *The Journal of Finance* 63(2), 797–849.
- Asness, C. S., T. J. Moskowitz, and L. H. Pedersen (2013). Value and momentum everywhere. *The Journal of Finance* 68(3), 929–985.
- Baele, L., G. Bekaert, S. Cho, K. Inghelbrecht, and A. Moreno (2015). Macroeconomic regimes. *Journal of Monetary Economics* 70, 51–71.
- Baele, L., G. Bekaert, and K. Inghelbrecht (2010). The determinants of stock and bond return comovements. *The Review of Financial Studies* 23(6), 2374–2428.
- Bakshi, G., X. Gao, and A. G. Rossi (2019, February). Understanding the Sources of Risk Underlying the Cross Section of Commodity Returns. *Management Science* 65(2), 619–641.
- Bansal, R., R. F. Dittmar, and C. T. Lundblad (2005). Consumption, dividends, and the cross section of equity returns. *The Journal of Finance* 60(4), 1639–1672.
- Bansal, R. and I. Shaliastovich (2012). A long-run risks explanation of predictability puzzles in bond and currency markets. *The Review of Financial Studies* 26(1), 1–33.
- Barro, R. J. and S. Misra (2016). Gold returns. *The Economic Journal* 126(594), 1293–1317.
- Baumeister, C. and J. D. Hamilton (2018). Structural Interpretation of Vector Autoregressions with Incomplete Identification: Revisiting the Role of Oil Supply and Demand Shocks. pp. 50.
- Bekaert, G. and X. Wang (2010, October). Inflation risk and the inflation risk premium: INFLATION RISK. *Economic Policy* 25(64), 755–806.

- Bhamra, H. S., C. Dorion, A. Jeanneret, and M. Weber (2018). Low inflation: High default risk and high equity valuations. Technical report, National Bureau of Economic Research.
- Bodenstein, M., C. J. Erceg, and L. Guerrieri (2008, October). Optimal monetary policy with distinct core and headline inflation rates. *Journal of Monetary Economics* 55, S18–S33.
- Boons, M., F. Duarte, F. de Roon, and M. Szymanowska (2019, September). Time-varying inflation risk and stock returns. *Journal of Financial Economics*, S0304405X19302429.
- Boudoukh, J. and M. Richardson (1993). Stock returns and inflation: A long-horizon perspective. *The American economic review* 83(5), 1346–1355.
- Buraschi, A. and A. Jiltsov (2005, February). Inflation risk premia and the expectations hypothesis. *Journal of Financial Economics* 75(2), 429–490.
- Campbell, J. Y. (1991, March). A Variance Decomposition for Stock Returns. *The Economic Journal* 101(405), 157.
- Campbell, J. Y., C. E. Pflueger, and L. M. Viceira (2019, May). Macroeconomic Drivers of Bond and Equity Risks. SSRN Scholarly Paper ID 2332106, Social Science Research Network, Rochester, NY.
- Campbell, J. Y., A. Sunderam, and L. M. Viceira (2009). Inflation bets or deflation hedges? the changing risks of nominal bonds. Technical report, National Bureau of Economic Research.
- Chen, N.-F., R. Roll, and S. A. Ross (1986, January). Economic Forces and the Stock Market. *The Journal of Business* 59(3), 383.
- Cieslak, A. and H. Pang (2020). Common shocks in stocks and bonds. Technical report, National Bureau of Economic Research.
- Clarida, R. H. and D. Waldman (2008). *9. Is Bad News about Inflation Good News for the Exchange Rate?* University of Chicago Press.
- Eraker, B., I. Shaliastovich, and W. Wang (2016, January). Durable Goods, Inflation Risk, and Equilibrium Asset Prices. *Review of Financial Studies* 29(1), 193–231.
- Fama, E. F. (1981). Stock Returns, Real Activity, Inflation, and Money. *The American Economic Review* 71(4), 545–565.
- Fama, E. F. and G. W. Schwert (1977). Asset returns and inflation. *Journal of financial economics* 5(2), 115–146.

- Fleckenstein, M., F. A. Longstaff, and H. Lustig (2017). Deflation risk. *The Review of Financial Studies* 30(8), 2719–2760.
- Gorton, G. and K. G. Rouwenhorst (2006). Facts and fantasies about commodity futures. *Financial Analysts Journal* 62(2), 47–68.
- Hansen, L. P., J. C. Heaton, and N. Li (2008, April). Consumption Strikes Back? Measuring Long-Run Risk. *Journal of Political Economy* 116(2), 260–302.
- Hollifield, B. and A. Yaron (2003). The Foreign Exchange Risk Premium: Real and Nominal Factors. pp. 35.
- Kang, J. and C. E. Pflueger (2015). Inflation risk in corporate bonds. *The Journal of Finance* 70(1), 115–162.
- Katz, M., H. Lustig, and L. Nielsen (2016). Are Stocks Real Assets? Sticky Discount Rates in Stock Markets. *The Review of Financial Studies* 30(2), 539–587.
- Katz, M., H. Lustig, and L. Nielsen (2017, February). Are Stocks Real Assets? Sticky Discount Rates in Stock Markets. *Review of Financial Studies* 30(2), 539–587.
- Kilian, L. (2009, May). Not All Oil Price Shocks Are Alike: Disentangling Demand and Supply Shocks in the Crude Oil Market. *American Economic Review* 99(3), 1053–1069.
- Kleibergen, F. and Z. Zhan (2020). Robust inference for consumption-based asset pricing. *The Journal of Finance* 75(1), 507–550.
- Kogan, L. and V. Konstantinovskiy (2008). Commodity futures and inflation. *Lehman Brothers Global Relative Value*.
- Kroencke, T. A. (2017). Asset pricing without garbage. *The Journal of Finance* 72(1), 47–98.
- Kung, H. (2015, January). Macroeconomic linkages between monetary policy and the term structure of interest rates. *Journal of Financial Economics* 115(1), 42–57.
- Leombroni, M., M. Piazzesi, M. Schneider, and C. Rogers (2020). Inflation and the price of real assets. Technical report, National Bureau of Economic Research.
- Lettau, M., S. C. Ludvigson, and S. Ma (2019). Capital share risk in us asset pricing. *The Journal of Finance* 74(4), 1753–1792.

- Lustig, H., N. Roussanov, and A. Verdelhan (2011). Common risk factors in currency markets. *The Review of Financial Studies* 24(11), 3731–3777.
- Lustig, H., N. Roussanov, and A. Verdelhan (2014). Countercyclical currency risk premia. *Journal of Financial Economics* 111(3), 527–553.
- Menkhoff, L., L. Sarno, M. Schmeling, and A. Schrimpf (2017). Currency value. *The Review of Financial Studies* 30(2), 416–441.
- Piazzesi, M. and M. Schneider (2006). Equilibrium yield curves. *NBER macroeconomics Annual* 21, 389–472.
- Ready, R., N. Roussanov, and C. Ward (2017a). After the tide: Commodity currencies and global trade. *Journal of Monetary Economics* 85, 69–86.
- Ready, R., N. Roussanov, and C. Ward (2017b, December). Commodity Trade and the Carry Trade: A Tale of Two Countries: Commodity Trade and the Carry Trade. *The Journal of Finance* 72(6), 2629–2684.
- Ready, R. C. (2017). Oil consumption, economic growth, and oil futures: the impact of long-run oil supply uncertainty on asset prices. *Journal of Monetary Economics*.
- Ready, R. C. (2018, February). Oil Prices and the Stock Market*. *Review of Finance* 22(1), 155–176.
- Rogoff, K. (1996). The purchasing power parity puzzle. *Journal of Economic literature* 34(2), 647–668.
- Smets, F. and R. Wouters (2007). Shocks and frictions in US business cycles: A Bayesian DSGE approach. *The American Economic Review* 97(3), 586–606.
- Song, D. (2016). Bond Market Exposures to Macroeconomic and Monetary Policy Risks. pp. 62.
- Stavrakeva, V. and J. Tang (2019). The dollar during the great recession: Us monetary policy signaling and the flight to safety.
- Verdelhan, A. (2018). The share of systematic variation in bilateral exchange rates. *The Journal of Finance* 73(1), 375–418.
- Wachter, J. A. (2006). A consumption-based model of the term structure of interest rates. *Journal of Financial economics* 79(2), 365–399.

Weber, M. (2015). Nominal rigidities and asset pricing.

Yogo, M. (2006). A consumption-based explanation of expected stock returns. *The Journal of Finance* 61(2), 539–580.

Table 1: Summary Statistics of Inflation

A. Summary				
	Mean		S.D.	Autocorr
Headline	3.76		3.24	0.60
Core	3.75		2.66	0.79
Food	3.75		4.04	0.43
Energy	4.01		19.52	0.04

B. Regression		
	β	<i>s.e.</i>
Core	0.71	0.01
Food	0.20	0.01
Energy	0.09	0.00

C. Correlation				
	Headline	Core	Food	Energy
Headline	1.00			
Core	0.80	1.00		
Food	0.60	0.44	1.00	
Energy	0.69	0.20	0.17	1.00

Notes: This table provides summary statistics of the headline inflation and its three components, core, food, and energy inflation. Data are quarterly from 1963Q3 to 2019Q4. All numbers are annualized. Panel A reports the mean, standard deviation, and autocorrelation of each series. Panel B reports the regression coefficients of headline inflation on core, food, and energy inflation. Panel C reports the correlation matrix.

Table 2: Average Portfolio Exposures to Inflation Risks

			A. Headline		B. Core and Energy			
	Mean	S.D.	headline β	t -stat	core β	t -stat	energy β	t -stat
Stock	6.80	16.79	-1.33	(-1.38)	-5.60	(-3.69)	0.21	(1.81)
Treasury	2.07	6.90	-2.53	(-7.06)	-2.51	(-4.27)	-0.20	(-4.57)
Agency	2.44	5.10	-1.62	(-5.42)	-2.25	(-4.28)	-0.09	(-2.75)
Corporate	3.08	6.39	-1.60	(-4.38)	-2.98	(-4.91)	-0.05	(-1.08)
Currency	1.76	7.05	1.04	(2.02)	-1.04	(-0.65)	0.13	(2.54)
Commodity	4.47	21.90	8.59	(7.53)	-0.07	(-0.04)	1.10	(8.21)
REIT	7.96	17.46	0.31	(0.27)	-6.54	(-3.30)	0.31	(2.48)
Intl Stock	6.09	16.53	-1.20	(-1.23)	-5.78	(-3.74)	0.19	(1.70)

Notes: This table reports the regression results of the specification $r_{i,t}^e = \alpha_i + \beta_{\pi}^i \varepsilon_{\pi,t} + u_{i,t}$ for 8 average portfolios in each asset class. Panel A uses headline inflation shock as the risk factor. Panel B uses core and energy inflation jointly as risk factors. The t -statistics are in the parentheses. The first two columns report the mean and standard deviation of returns in each row.

Table 3: Asset Return Exposure to Inflation Risks

	Mean	S.D.	A. Headline		B. Core and energy			
			headline β	t -stat	core β	t -stat	energy β	t -stat
<i>Stock</i>								
Consumer	7.83	17.70	-2.62	(-2.61)	-6.34	(-3.97)	0.06	(0.48)
Manufacturing	6.65	15.49	0.32	(0.35)	-4.20	(-3.02)	0.36	(3.39)
High Tech	7.31	20.29	-1.17	(-1.00)	-6.07	(-3.29)	0.26	(1.86)
Health	8.67	17.80	-2.73	(-2.70)	-6.30	(-3.91)	0.04	(0.34)
Others	7.27	20.09	-2.38	(-2.08)	-7.40	(-4.09)	0.17	(1.22)
<i>Treasury</i>								
1-year	0.96	1.87	-0.56	(-5.60)	-0.84	(-5.20)	-0.03	(-2.20)
3-year	1.19	3.16	-0.97	(-5.70)	-1.44	(-5.26)	-0.05	(-2.24)
5-year	1.93	5.86	-1.85	(-5.90)	-2.21	(-4.34)	-0.13	(-3.28)
7-year	2.35	6.97	-2.33	(-6.31)	-2.46	(-4.08)	-0.18	(-3.89)
10-year	2.19	8.29	-2.68	(-6.07)	-3.10	(-4.30)	-0.19	(-3.40)
20-year	2.95	11.32	-4.16	(-7.05)	-3.79	(-3.92)	-0.35	(-4.82)
30-year	2.94	13.29	-5.18	(-7.60)	-3.72	(-3.33)	-0.51	(-6.00)
<i>Agency Bond</i>								
1-5 year	1.83	3.94	-1.17	(-4.99)	-1.90	(-4.66)	-0.05	(-2.03)
5-10 year	3.58	5.20	-1.48	(-3.89)	-0.26	(-0.21)	-0.14	(-3.70)
10-15 year	3.62	8.64	-2.84	(-5.69)	-3.71	(-4.25)	-0.18	(-3.10)
>15 year	4.76	10.38	-3.42	(-5.72)	-3.63	(-3.44)	-0.26	(-3.66)
<i>Corporate Bond</i>								
1-3 year	2.26	3.21	-0.48	(-2.44)	-1.56	(-4.69)	0.02	(0.70)
3-5 year	2.93	4.89	-0.84	(-2.78)	-2.14	(-4.17)	0.00	(0.06)
5-10 year	3.61	6.91	-1.25	(-2.93)	-2.98	(-4.05)	-0.01	(-0.26)
>15 year	4.27	10.13	-2.85	(-4.98)	-4.47	(-4.66)	-0.13	(-1.91)
<i>Currency</i>								
Dollar-carry	5.34	8.82	-0.98	(-1.52)	-4.17	(-2.08)	0.00	(-0.04)
Carry-1	-1.81	7.94	0.33	(0.57)	-0.52	(-0.28)	0.06	(0.95)
Carry-2	-0.25	7.47	1.60	(2.99)	1.72	(1.03)	0.14	(2.55)
Carry-3	1.12	7.27	1.02	(1.92)	-0.04	(-0.02)	0.11	(2.02)
Carry-4	2.53	8.20	0.45	(0.74)	-2.50	(-1.34)	0.10	(1.60)
Carry-5	3.43	8.76	1.44	(2.28)	-1.28	(-0.65)	0.19	(2.94)
Carry-6	5.56	10.10	1.38	(1.87)	-3.62	(-1.60)	0.20	(2.72)
<i>Commodity</i>								
Livestock	2.70	16.99	1.24	(1.24)	-1.09	(-0.66)	0.15	(1.22)
Industrial metal	4.23	25.69	4.73	(2.98)	-1.07	(-0.39)	0.66	(3.66)
Precious metal	3.41	20.96	3.28	(2.65)	-0.22	(-0.11)	0.43	(2.96)
Energy	7.26	36.93	16.51	(7.05)	-0.76	(-0.11)	1.78	(7.54)
Agriculture	0.28	22.24	4.20	(3.28)	2.06	(0.96)	0.26	(1.66)
<i>REIT</i>								
Equity	8.31	17.87	0.72	(0.61)	-6.48	(-3.20)	0.35	(2.77)
Mortgage	4.73	21.15	-2.25	(-1.63)	-8.61	(-3.56)	0.04	(0.25)
Hybrid	8.20	20.31	-1.05	(-0.79)	-6.14	(-2.60)	0.12	(0.79)
<i>International Stock</i>								
NorthAmerica	6.82	16.36	-0.92	(-0.96)	-5.47	(-3.57)	0.23	(2.02)
Europe	6.60	18.63	-0.93	(-0.85)	-6.09	(-3.48)	0.20	(1.56)
FarEast	7.01	22.66	-1.33	(-0.99)	-5.05	(-2.32)	0.15	(0.93)

Note: This table reports the regression results of the specification $r_{i,t}^e = \alpha_i + \beta_\pi^i \varepsilon_{\pi,t} + u_{i,t}$ for 38 test portfolios in each asset class. Panel A uses headline inflation shock as the risk factor. Panel B uses core and energy inflation jointly as risk factors. The t -statistics are in the parentheses. The first two columns report the mean and standard deviation of returns in each row.

Table 4: Price of Inflation Risks

	A. 8 Average Portfolios		B. 38 Portfolios	
headline λ	0.14		-0.08	
t -stat	(0.47)		(-0.32)	
core λ		-1.03		-1.07
t -stat		(-2.94)		(-3.72)
energy λ		3.86		3.81
t -stat		(1.35)		(1.36)
R^2	0.44	0.98	0.41	0.82

Notes: This table reports the price of risk estimated from the test portfolios. Panel A uses the 8 average portfolios from each asset class as test portfolios. Panel B uses the 38 test portfolios as test assets. In each panel, the first column reports the price of headline inflation and the second column reports the price of core and energy inflation. Price of risk is estimated using two-step procedure and the t -statistics are calculated using Shanken-adjusted standard errors. The second-step R^2 is also reported in the last row.

Table 5: Price of Inflation Risks

	Stock	Treasury	Agen	Corp	Curr	Comm	REIT	Intl	Aver	All
core λ	-1.26	-0.89	-0.68	-1.09	-0.99	-0.80	-1.06	-0.97	-1.03	-1.07
t -stat	(-2.51)	(-2.43)	(-1.57)	(-2.75)	(-1.96)	(-0.75)	(-2.70)	(-1.69)	(-2.94)	(-3.72)
energy λ	2.02	0.56	-8.25	7.65	2.37	4.18	3.27	8.08	3.86	3.81
t -stat	(0.50)	(0.14)	(-1.06)	(2.01)	(0.26)	(1.41)	(0.41)	(1.31)	(1.35)	(1.36)
R^2	0.26	0.93	0.96	0.75	0.63	0.89	0.23	0.49	0.98	0.82

Notes: This table reports the price of risks in various specifications. Columns 1 to 8 use a cross-section of expanded portfolios from each asset class to estimate the price of core and energy risk. Column “Average” uses 8 average portfolios and column “All” uses 38 test portfolios. The price of risk is estimated using two-step procedure and the t -statistics are calculated using Shanken-adjusted standard errors. The second-step R^2 is also reported in the last row.

Table 6: Mimicking Portfolios: Fama-MacBeth Portfolios

	Stock	Treasury	Agen	Corp	Curr	Comm	REIT	Intl	Aver	All
A. Core										
mean	-1.26	-0.86	-0.68	-1.05	-1.13	-1.38	-1.05	-0.97	-0.91	-0.99
<i>t</i> -stat	(-3.31)	(-2.84)	(-2.09)	(-3.06)	(-3.92)	(-1.16)	(-3.25)	(-2.09)	(-2.92)	(-3.61)
Sharpe ratio	-0.44	-0.36	-0.27	-0.49	-0.64	-0.17	-0.51	-0.31	-0.40	-0.49
B. Energy										
mean	2.02	0.64	-8.25	6.66	1.34	12.73	3.47	8.08	5.23	5.71
<i>t</i> -stat	(0.61)	(0.19)	(-1.30)	(2.07)	(0.18)	(1.88)	(0.55)	(1.58)	(2.03)	(2.10)
Sharpe ratio	0.09	0.03	-0.18	0.30	0.03	0.36	0.09	0.24	0.28	0.29
C. Headline										
mean	-2.81	-0.80	-1.39	-1.40	0.79	1.07	0.89	-2.92	0.13	-0.11
<i>t</i> -stat	(-3.36)	(-2.24)	(-3.07)	(-2.85)	(0.88)	(1.61)	(1.12)	(-2.34)	(0.42)	(-0.35)
Sharpe ratio	-0.45	-0.30	-0.46	-0.42	0.17	0.29	0.18	-0.34	0.06	-0.05

Notes: The table reports the characteristics of Fama-MacBeth factor mimicking portfolios. The table reports the mean, the *t*-statistics, and the Sharpe ratio. The columns indicate the test assets used to construct the mimicking portfolios.

Table 7: Inflation Hedging Properties of Conventional Real Assets

			A. Headline		B. Core and energy			
	Mean	S.D.	headline β	t -stat	core β	t -stat	energy β	t -stat
<i>Currency</i>								
Value-1	-0.01	9.82	1.65	(2.32)	-2.12	(-0.96)	0.21	(2.94)
Value-2	1.16	9.52	1.48	(2.15)	-2.53	(-1.19)	0.20	(2.85)
Value-3	2.52	9.51	1.54	(2.23)	-1.74	(-0.82)	0.20	(2.84)
Value-4	4.14	8.89	1.43	(2.22)	-2.73	(-1.38)	0.21	(3.24)
Dollar-beta-1	0.83	3.80	-0.37	(-1.24)	-0.04	(-0.04)	-0.04	(-1.39)
Dollar-beta-2	1.68	5.61	-0.82	(-1.90)	-1.46	(-1.04)	-0.05	(-1.20)
Dollar-beta-3	2.57	6.93	-0.30	(-0.56)	-1.77	(-1.01)	0.02	(0.34)
Dollar-beta-4	3.65	8.16	0.57	(0.90)	-3.27	(-1.61)	0.12	(1.99)
Dollar-beta-5	3.13	10.03	-0.79	(-1.02)	-3.85	(-1.52)	0.01	(0.07)
Dollar-beta-6	4.87	10.59	-0.62	(-0.75)	-5.05	(-1.91)	0.04	(0.46)
<i>Commodity</i>								
Gold	1.98	17.28	2.14	(1.97)	1.74	(0.91)	0.24	(1.92)
Silver	3.52	31.82	4.95	(2.63)	-0.09	(-0.03)	0.68	(3.06)
Platinum	4.36	20.46	3.40	(2.29)	7.51	(1.63)	0.26	(1.69)
<i>REIT</i>								
Diversified	7.80	20.89	-0.20	(-0.14)	-7.25	(-3.02)	0.27	(1.82)
Healthcare	11.63	19.18	-0.07	(-0.05)	-7.18	(-1.63)	0.09	(0.61)
Industrial/office	6.84	22.08	2.08	(1.44)	-4.90	(-1.93)	0.43	(2.73)
Lodging/resorts	3.62	32.08	1.20	(0.57)	-5.26	(-1.40)	0.38	(1.61)
Residential	9.91	19.65	-0.65	(-0.51)	-9.63	(-4.40)	0.30	(2.18)
Retail	9.21	19.58	1.54	(1.20)	-4.72	(-2.09)	0.38	(2.68)
Self-storage	10.97	20.67	-0.08	(-0.05)	-7.19	(-1.57)	0.06	(0.36)
Unclassified	7.36	19.05	0.55	(0.44)	-5.86	(-2.68)	0.31	(2.24)
<i>TIPS</i>								
Index	1.77	9.53	0.64	(1.61)	4.54	(2.92)	0.01	(0.36)

Notes: This table reports the regression results of the specification $r_{i,t}^e = \alpha_i + \beta_\pi^i \varepsilon_{\pi,t} + u_{i,t}$. Panel A uses headline inflation shock as the risk factor. Panel B uses core and energy inflation jointly as risk factors. The t -statistics are in the parentheses. The first two columns report the mean and standard deviation of returns in each row.

Table 8: Subsample Analysis

	A. Headline		B. Core and Energy				C. Test Break p-value		
	headline β	t -stat	core β	t -stat	energy β	t -stat	headline	core	energy
1963-1999									
Stock	-5.42	(-4.20)	-5.19	(-3.26)	-0.24	(-1.01)			
Treasury	-2.88	(-5.52)	-2.77	(-4.31)	-0.20	(-2.03)			
Agency	-2.49	(-4.31)	-2.50	(-3.56)	-0.12	(-1.20)			
Corporate	-3.23	(-5.76)	-3.08	(-4.44)	-0.22	(-2.22)			
Currency	0.12	(0.08)	0.26	(0.09)	0.06	(0.33)			
Commodity	4.55	(2.80)	0.42	(0.21)	0.65	(2.24)			
REIT	-5.79	(-3.76)	-5.91	(-3.29)	-0.37	(-1.43)			
Intl Stock	-5.92	(-4.60)	-5.12	(-3.24)	-0.46	(-1.97)			
2000-2019									
Stock	2.96	(2.22)	-6.30	(-1.18)	0.35	(2.63)	0.00	0.84	0.03
Treasury	-2.23	(-4.73)	-0.29	(-0.15)	-0.22	(-4.65)	0.36	0.25	0.83
Agency	-1.05	(-4.38)	-0.27	(-0.27)	-0.10	(-4.11)	0.02	0.18	0.82
Corporate	-0.20	(-0.49)	-0.66	(-0.40)	-0.01	(-0.22)	0.00	0.24	0.04
Currency	1.30	(2.67)	-1.87	(-0.96)	0.15	(3.10)	0.37	0.52	0.55
Commodity	12.44	(8.35)	-0.38	(-0.06)	1.24	(8.44)	0.00	0.90	0.07
REIT	3.47	(2.22)	-10.18	(-1.65)	0.44	(2.88)	0.00	0.47	0.01
Intl Stock	3.28	(2.47)	-6.62	(-1.25)	0.39	(2.95)	0.00	0.78	0.00
D. Price of Risk									
	1963-1999					2000-2019			
headline λ	-0.25					0.35			
t -stat	(-0.93)					(0.72)			
core λ						-1.05			
t -stat						(-3.47)			
energy λ						3.12			
t -stat						(1.39)			
R^2	0.36		0.42		0.36		0.50		

Notes: This table reports the regression results of the specification $r_{i,t}^e = \alpha_i + \beta_i \varepsilon_{\pi,t} + u_{i,t}$ for 8 average portfolios in each asset class. Panel A uses headline inflation shock as the risk factor. Panel B uses core and energy inflation jointly as risk factors. The t-statistics are in the parentheses. The upper panels show the results from 1963-1999 and the lower panels show the results from 2000-2019. Panel C shows the p-value of tests on equal β over the two sub-sample. Panel D reports the price of risk estimated from 38 test portfolios. Price of risk is estimated using two-step procedure and the t-statistics are calculated using Shanken-adjusted standard errors. The second-step R^2 is also reported in the last row.

Table 9: Price of Inflation Risks with Macroeconomic Factors

	Cons	Cons/Dur	IP	Pay	Unem	HHL	Unf Cons	Cap
core	-1.06	-1.04	-1.07	-1.07	-1.06	-1.04	-1.07	-1.08
<i>t</i> -stat	(-3.69)	(-3.67)	(-3.51)	(-3.27)	(-3.39)	(-3.48)	(-3.70)	(-3.72)
energy	3.90	4.38	4.08	3.68	3.84	3.97	3.98	3.94
<i>t</i> -stat	(1.29)	(1.36)	(1.38)	(1.33)	(1.36)	(1.29)	(1.44)	(1.38)
macro	0.10	0.17	-0.34	-0.08	0.11	0.46	0.00	-0.31
<i>t</i> -stat	(0.18)	(0.32)	(-0.24)	(-0.16)	(0.26)	(0.62)	(0.26)	(-0.59)
macro2		-2.62				-0.01		
<i>t</i> -stat		(-0.67)				(-0.58)		
R^2	0.82	0.82	0.82	0.82	0.82	0.81	0.82	0.80

Notes: This table reports the price of risks in various specifications with the inclusion of macroeconomic factors including consumption growth (Cons), durable consumption growth (Cons/Dur), industrial production growth (IP), payroll growth (Pay), unemployment rate growth (Unem), long-run consumption growth rate and short-run consumption growth news (HHL), unfiltered consumption growth (Unf Cons), and capital share growth (Cap).

Table 10: Inflation and Real Growth

	headline	<i>t</i> -stat	<i>R</i> ²	core	<i>t</i> -stat	energy	<i>t</i> -stat	<i>R</i> ²
				1 quarter				
GDP	-0.14	(-1.21)	0.02	-0.21	(-1.88)	0.00	(-0.23)	0.03
Consumption	-0.22	(-2.42)	0.08	-0.22	(-2.32)	-0.01	(-0.86)	0.07
Dividend	-0.27	(-1.15)	0.02	-0.67	(-4.27)	0.04	(0.96)	0.06
				1 year				
GDP	-0.75	(-2.34)	0.08	-0.70	(-2.24)	-0.05	(-1.05)	0.07
Consumption	-0.66	(-2.24)	0.09	-0.46	(-1.81)	-0.05	(-1.12)	0.05
Dividend	-1.26	(-1.12)	0.03	-2.93	(-5.78)	0.18	(0.95)	0.11

Notes: This table reports the results of regressions of future real growth on current inflation at one-quarter and one-year horizons. The *t*-statistics are in the parentheses.

Table 11: Cash Flow and Discount Rate News Exposures

	Cash Flow News				Discount Rate News			
	core	<i>t</i> -stat	energy	<i>t</i> -stat	core	<i>t</i> -stat	energy	<i>t</i> -stat
Stock	-2.14	(-4.12)	-0.01	(-0.23)	4.23	(3.47)	-0.19	(-2.05)
Consumer	-6.23	(-6.03)	-0.19	(-2.43)	1.00	(1.40)	-0.18	(-3.39)
Manufacturing	-1.80	(-3.97)	0.00	(0.07)	3.16	(2.98)	-0.28	(-3.46)
HiTech	-4.61	(-3.49)	0.06	(0.65)	2.23	(1.46)	-0.12	(-1.04)
Health	-0.86	(-1.67)	-0.16	(-4.19)	6.16	(3.64)	-0.12	(-0.94)
Others	-4.04	(-3.71)	0.03	(0.41)	4.04	(4.13)	-0.08	(-1.07)
BM1 growth	-4.96	(-5.58)	-0.11	(-1.60)	2.57	(2.57)	-0.24	(-3.14)
BM2	-2.44	(-2.83)	0.00	(-0.03)	3.07	(3.55)	-0.10	(-1.55)
BM3	-2.28	(-2.76)	-0.03	(-0.47)	2.73	(3.37)	-0.14	(-2.26)
BM4	0.71	(0.80)	0.12	(1.80)	6.27	(4.33)	-0.12	(-1.07)
BM5 value	1.27	(1.17)	0.08	(0.92)	7.17	(4.35)	-0.14	(-1.09)
World	-3.07	(-4.10)	0.03	(0.53)	3.27	(3.77)	-0.08	(-1.22)
North America	-0.89	(-1.98)	0.01	(0.18)	5.18	(4.35)	-0.14	(-1.62)
Europe	-5.54	(-3.99)	-0.04	(-0.40)	0.69	(1.19)	-0.14	(-3.29)
Far East	-2.82	(-3.06)	0.08	(1.18)	3.03	(1.96)	0.03	(0.30)
REITs Index	-4.63	(-2.58)	0.28	(3.01)	1.93	(1.98)	-0.04	(-0.81)
Equity	-5.68	(-2.95)	0.34	(3.38)	1.41	(1.52)	-0.03	(-0.64)
Mortgage	-4.81	(-1.64)	-0.10	(-0.65)	0.74	(1.79)	-0.01	(-0.41)
Hybrid	-1.16	(-0.64)	0.25	(2.62)	3.50	(2.84)	0.10	(1.51)

Notes: This table reports the regression results of the cash flow and discount rate news on core and energy inflation shocks. The *t*-statistics are in the parentheses.

Table 12: Flexible vs. Sticky Inflation

A. Asset Return Exposures				
	sticky	<i>t</i> -stat	flexible	<i>t</i> -stat
Stock	-4.68	(-2.99)	0.25	(0.61)
Treasury	-1.12	(-1.86)	-0.93	(-5.93)
Agency	-0.94	(-1.93)	-0.51	(-4.20)
Corporate	-1.61	(-2.70)	-0.39	(-2.56)
Currency	-1.14	(-0.69)	0.41	(2.16)
Commodity	-1.53	(-0.87)	3.88	(8.51)
REIT	-4.35	(-2.38)	0.61	(1.38)
Intl Stock	-4.95	(-3.27)	0.23	(0.58)

B. Price of Risk		
	8 Average Portfolios	38 Portfolios
sticky λ	-1.50	-1.45
<i>t</i> -stat	(-2.61)	(-3.49)
flexible λ	0.45	-0.21
<i>t</i> -stat	(0.47)	(-0.24)
R^2	0.89	0.78

Notes: This table reports the two-step asset pricing results for flexible and sticky inflation. Panel A reports the asset return exposures for the 8 average portfolios, and Panel B reports the price of risk estimates for both 8 portfolios and 38 portfolios. The *t*-statistics are in the parentheses.

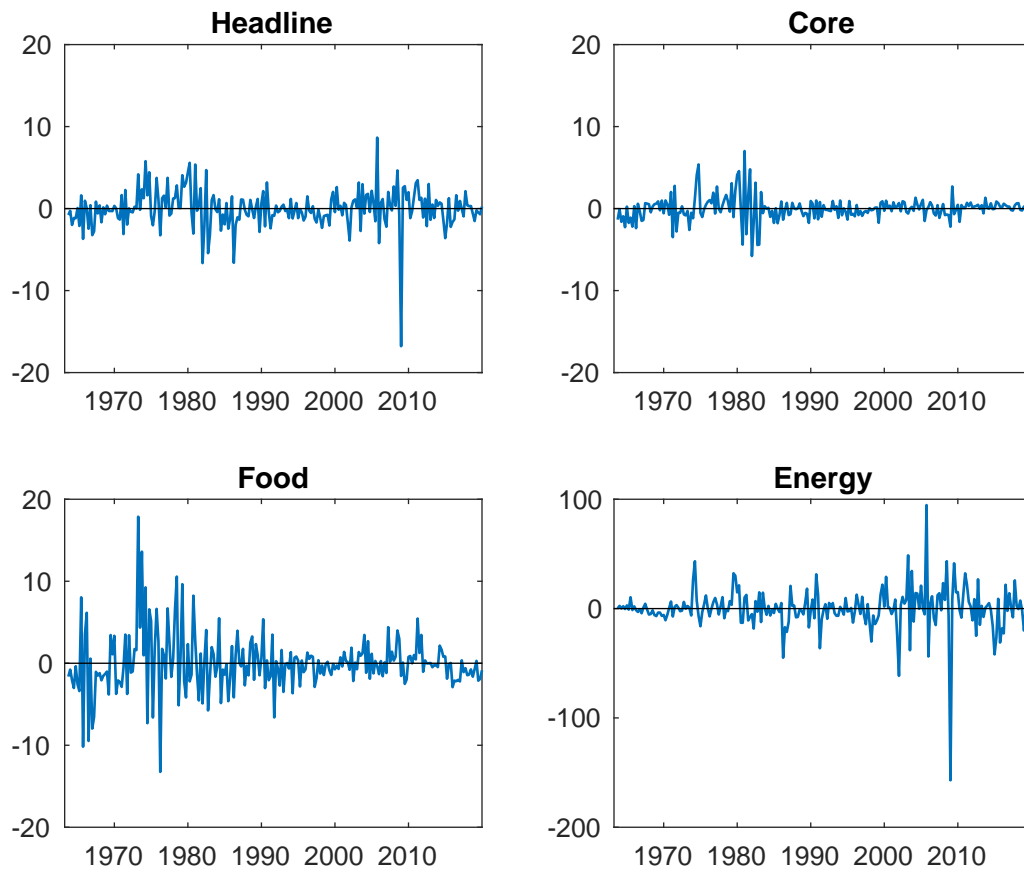
Table 13: Hedging Inflation, Expected Inflation, and Inflation Shocks

A. Headline											
	headline		<i>t</i> -stat		headline expect.		<i>t</i> -stat		headline shock		
Stock	-1.35		(-1.96)		-1.37		(-1.38)		-1.33		(-1.38)
Treasury	-1.44		(-5.38)		-0.29		(-0.77)		-2.53		(-7.05)
Agency	-1.02		(-4.47)		-0.30		(-0.92)		-1.62		(-5.44)
Corporate	-1.18		(-4.58)		-0.75		(-2.04)		-1.59		(-4.38)
Currency	0.89		(1.74)		0.00		(0.00)		1.04		(1.95)
Commodity	4.50		(5.20)		0.20		(0.17)		8.59		(7.51)
REIT	-0.04		(-0.05)		-0.50		(-0.36)		0.25		(0.21)
IntlStock	-1.19		(-1.72)		-1.19		(-1.19)		-1.19		(-1.23)

B. Core and Energy											
	core		<i>t</i> -stat		energy		<i>t</i> -stat		core expect.		
Stock	-2.43		(-2.87)		0.16		(1.36)		-0.91		(-0.93)
Treasury	-0.68		(-2.03)		-0.20		(-4.48)		-0.20		(-0.54)
Agency	-0.69		(-2.35)		-0.10		(-2.93)		-0.27		(-0.86)
Corporate	-1.16		(-3.52)		-0.06		(-1.41)		-0.58		(-1.58)
Currency	-0.19		(-0.19)		0.12		(2.29)		-0.05		(-0.05)
Commodity	-1.04		(-1.03)		1.08		(8.08)		0.01		(0.01)
REIT	-2.49		(-2.05)		0.26		(2.11)		-0.75		(-0.57)
IntlStock	-2.38		(-2.76)		0.14		(1.27)		-0.87		(-0.90)

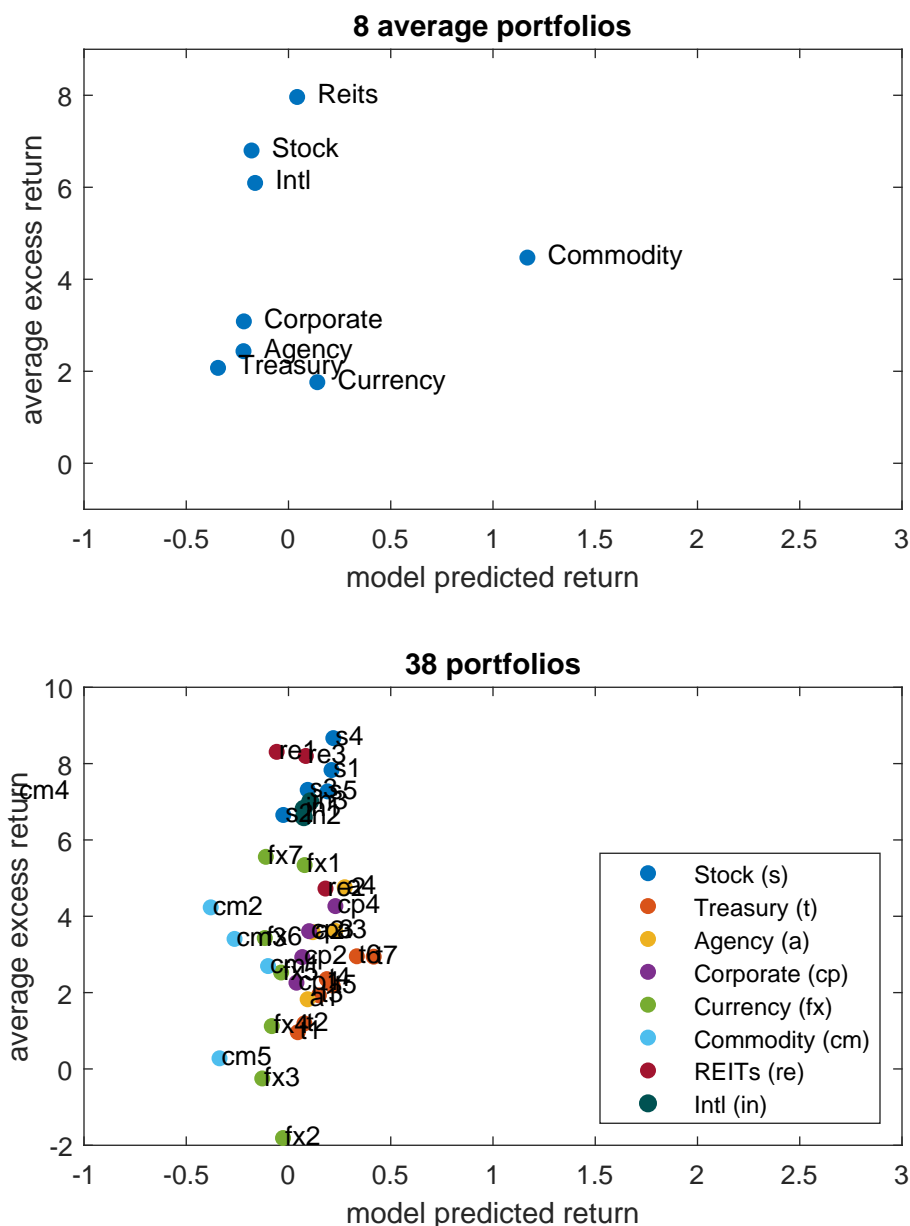
Notes: This table reports the inflation hedging properties of 8 average portfolios with respect inflation level, expected inflation, and inflation shock (headline, core, and energy). The *t*-statistics are in the parentheses.

Figure 1: Inflation



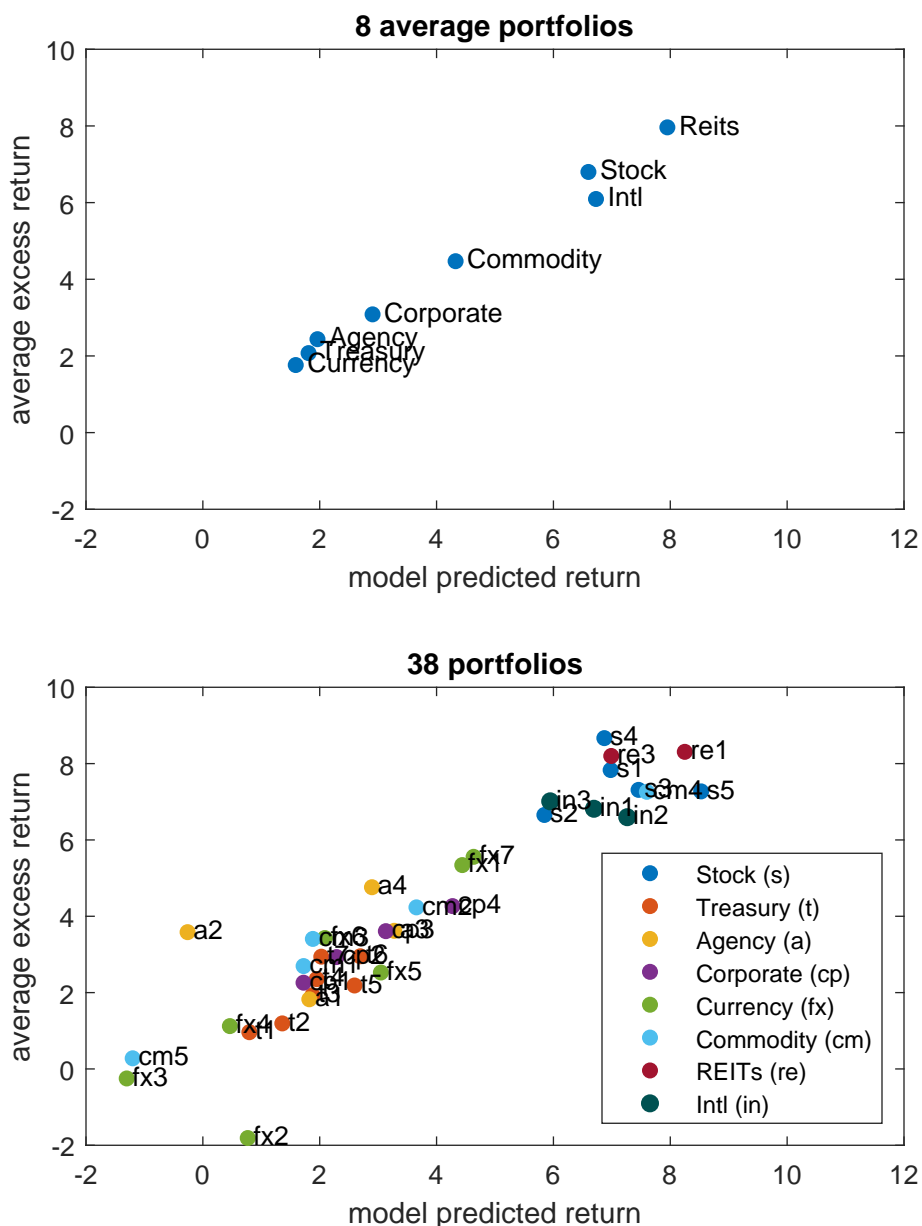
Notes: This figure plots the time-series of headline, core, food, and energy inflation shocks extracted from VAR described in the main text. Data are quarterly from 1963Q3 to 2019Q4.

Figure 2: Average Returns vs. Model Predicted Returns: Headline Inflation



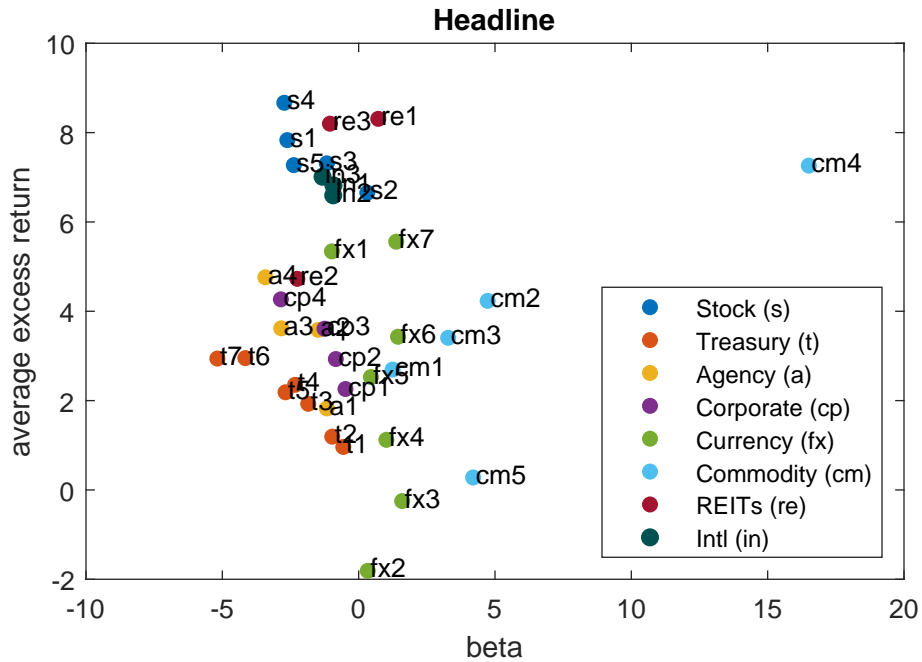
Notes: This figure plots the average excess return of the 8 average portfolios and 38 portfolios against their model predicted returns with headline inflation only as the risk factor. The horizontal axis are model predicted returns, and the vertical axis shows the average excess returns. Each dot represents a portfolio. Abbreviation correspondence: s1 cons, s2 manu, s3 tech, s4 health, s5 others; t1-t7, a1-a4, cp1-cp4, from short to long maturity; fx1 dollar carry, fx2-fx7, from low interest rate to high interest rate; cm1 livestock, cm2 ind metal, cm3 pre metal, cm4 energy, cm5 agriculture; re1 equity, re2 mortgage, re3 hybrid, in1 North America, in2 Europe, in3 Far East.

Figure 3: Average Returns vs. Model Predicted Returns: Core and Energy Inflation



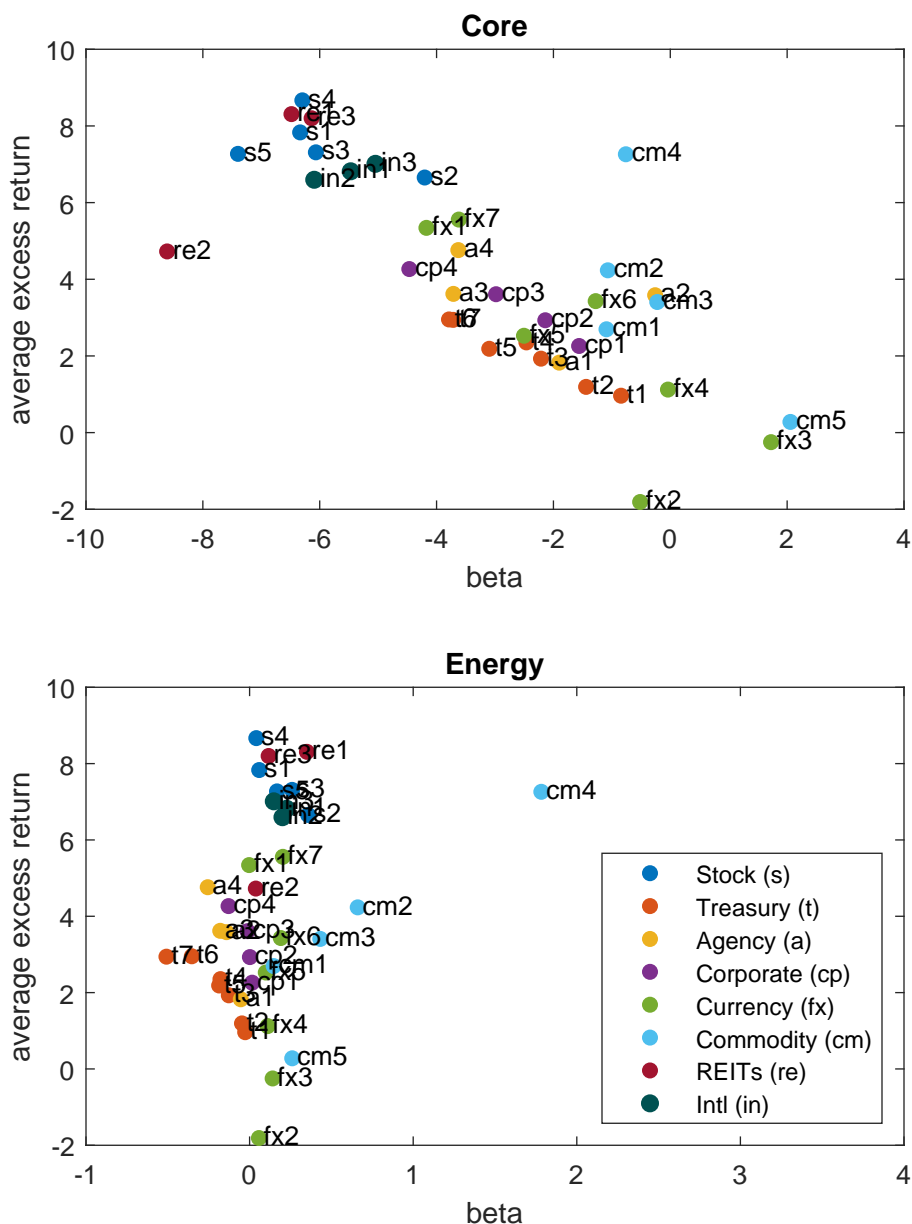
Notes: This figure plots the average excess return of the 8 average portfolios and 38 portfolios against their model predicted returns with core and energy inflation risk factors. The horizontal axis are model predicted returns, and the vertical axis shows the average excess returns. Each dot represents a portfolio. Abbreviation correspondence: s1 cons, s2 manu, s3 tech, s4 health, s5 others; t1-t7, a1-a4, cp1-cp4, from short to long maturity; fx1 dollar carry, fx2-fx7, from low interest rate to high interest rate; cm1 livestock, cm2 ind metal, cm3 pre metal, cm4 energy, cm5 agriculture; re1 equity, re2 mortgage, re3 hybrid, in1 North America, in2 Europe, in3 Far East.

Figure 4: Average Returns and Headline Inflation Beta



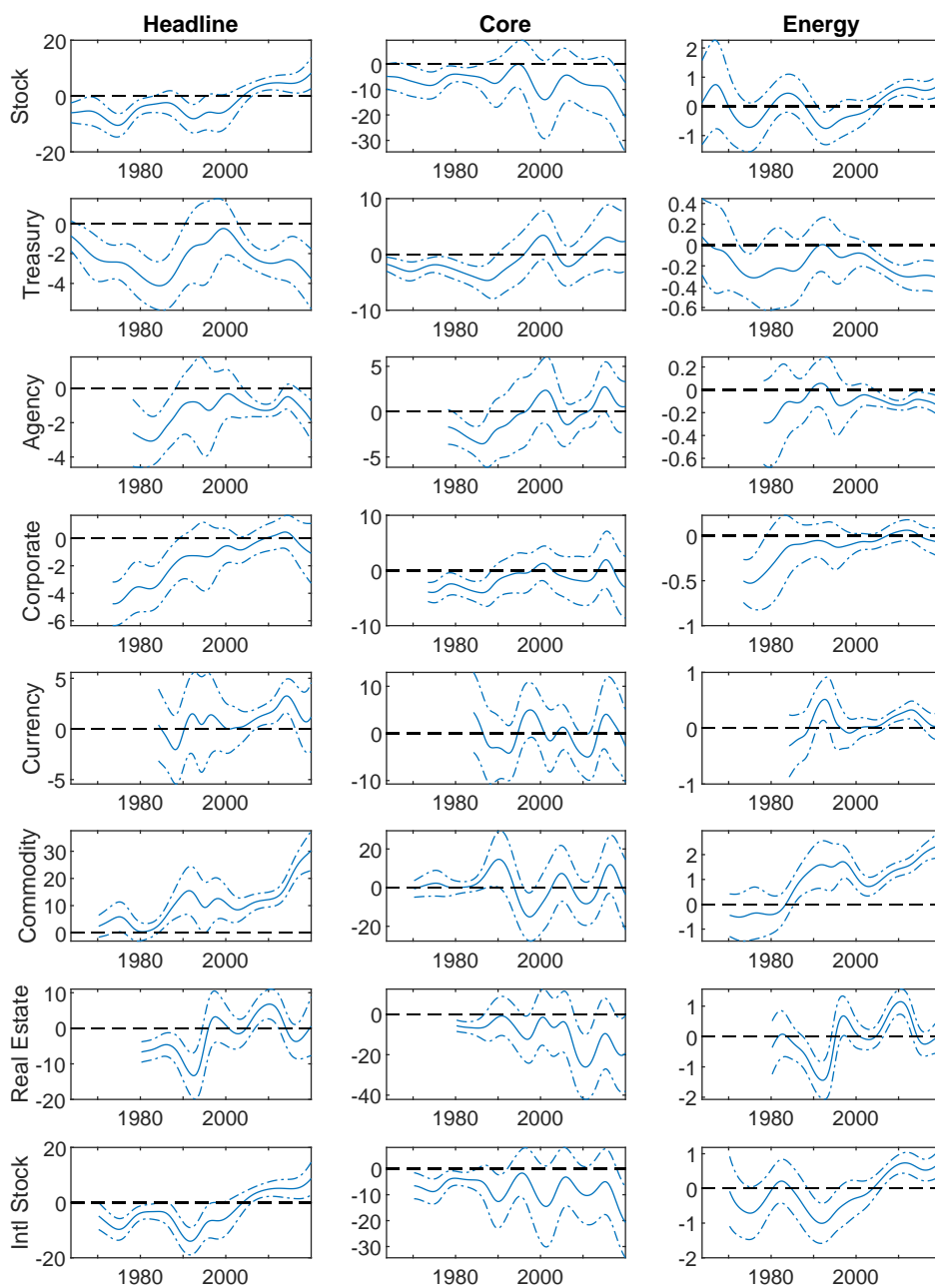
Notes: This figure plots the average excess return of the 38 test portfolios against their headline inflation betas. The horizontal axis shows headline inflation betas and the vertical axis shows the average excess returns. Each dot represents a test portfolio, and different colors refer to assets from different asset classes. Abbreviation correspondence: s1 cons, s2 manu, s3 tech, s4 health, s5 others; t1-t7, a1-a4, cp1-cp4, from short to long maturity; fx1 dollar carry, fx2-fx7, from low interest rate to high interest rate; cm1 livestock, cm2 ind metal, cm3 pre metal, cm4 energy, cm5 agriculture; re1 equity, re2 mortgage, re3 hybrid, in1 North America, in2 Europe, in3 Far East.

Figure 5: Inflation Beta and Average Returns



Notes: This figure plots the average excess return of the 38 test portfolios against their core and energy inflation betas (bivariate). The horizontal axis shows core and energy inflation betas and the vertical axis shows the average excess returns. Each dot represents a test portfolio, and different colors refer to assets from different asset classes. Abbreviation correspondence: s1 cons, s2 manu, s3 tech, s4 health, s5 others; t1-t7, a1-a4, cp1-cp4, from short to long maturity; fx1 dollar carry, fx2-fx7, from low interest rate to high interest rate; cm1 livestock, cm2 ind metal, cm3 pre metal, cm4 energy, cm5 agriculture; re1 equity, re2 mortgage, re3 hybrid, in1 North America, in2 Europe, in3 Far East.

Figure 6: Inflation Beta and Average Returns



Notes: This figure plots the time-varying estimates of betas. The core and energy betas are in a bi-variate regression. The estimates are from a Gaussian kernel estimator with bandwidth of 0.05. The 90% confidence intervals are plotted.

A Model Details

In this section of the appendix, we list a detailed description of the model, including the optimization of different economic agents, optimality conditions, and the intermediate steps of solving for asset prices.

A.1 Households

The households' optimization problem is stated in the main text, which leads to the following Euler equation:

$$E_t M_{t+1}^{\$} R_{t+1} = 1, \quad (15)$$

$$\text{where } M_{t+1}^{\$} = \beta \left(\frac{C_{t+1}}{C_t} \right)^{-\gamma} \frac{P_{h,t} P_t}{P_{h,t+1} P_{t+1}}.$$

Particularly, the Euler equation for nominal risk-free rate characterizes the aggregate-demand equilibrium relation in this economy, i.e.:

$$E_t M_{t+1}^{\$} (1 + i_t) = 1. \quad (16)$$

Plug in $M_{t+1}^{\$}$ and the Taylor rule, the Euler equation can be rewritten as:

$$-\eta_c E_t (c_{c,t+1} - c_{c,t}) - \kappa_e [E_t (c_{e,t+1} - c_{e,t}) + E_t (\delta_{t+1} - \delta_t)] - E_t \pi_{t+1} + \phi_\pi \pi_t = 0, \quad (17)$$

$$\text{where } \eta_c = \gamma \hat{\alpha}_c + \frac{1 - \hat{\alpha}_c}{\phi} > 0, \kappa_e = (\gamma - \frac{1}{\phi})(1 - \hat{\alpha}_c) < 0.$$

A.2 Product

The firm's optimal price setting decision is described in the following optimization problem:

$$\max_{P_t^*} \sum_{k=0}^{\infty} \theta^k E_t M_{t,t+k}^{\$} [P_t^* Y_{t+k|t} - \Psi(Y_{t+k|t})] \quad (18)$$

$$s.t. : Y_{t+k|t} = \left(\frac{P_t^*}{P_{t+k}} \right)^{-\varepsilon_{t+k}} C_{c,t+k} \quad (19)$$

where $Y_{t+k|t}$ is the production if the firm still faces a price P_t^* in period $t+k$, $M_{t,t+k}^{\$} \equiv \beta^k \left(\frac{C_{t+k}}{C_t} \right)^{-\gamma} \frac{P_{h,t}}{P_{h,t+k}} \frac{P_t}{P_{t+k}}$ is the nominal stochastic discount factor from period t to $t+k$, and $\Psi(Y_{t+k|t})$ is the total cost of producing $Y_{t+k|t}$ units of core good. The firm's optimality condition is:

$$\sum_{k=0}^{\infty} \theta^k E_t M_{t,t+k}^{\$} \left[Y_{t+k|t} + (P_t^* - \Psi'(Y_{t+k|t})) \frac{\partial Y_{t+k|t}}{\partial P_t^*} \right] = 0 \quad (20)$$

After log-linearization, we obtain the standard New-Keynesian Phillips Curve:

$$\pi_t = \beta E_t \pi_{t+1} - \lambda(-mc_t - \mu_t), \quad (21)$$

where $\lambda = \frac{(1-\theta)(1-\beta\theta)}{\theta} \frac{1-\alpha}{1-\alpha+\alpha\bar{\varepsilon}}$ and mc_t is the real marginal cost of core production, or the inverse of markup, which can be expressed as:

$$mc_t = \kappa_c c_{c,t} + \kappa_e c_{e,t} + \kappa_\delta \delta_t, \quad (22)$$

where $\kappa_c = \frac{\varphi+\alpha}{1-\alpha} + \gamma\hat{\alpha}_c + \frac{1-\hat{\alpha}_c}{\phi} > 0$.

Core inflation depends on future expected core inflation and the deviation of markup from the desired level. λ captures the relative weight of future expectation and current markup deviation. The marginal cost increases with the production of core goods ($\kappa_c > 0$) both because the production technology is decreasing return to scale and the increase in wage when core consumption is higher. A positive energy demand or supply shock reduces marginal cost of production ($\kappa_e < 0$) because it raises the marginal utility of consumption of core goods, which leads to a lower wage level.

Equation (17) and (21) define the equilibrium of the economy.

A.3 Asset Prices

We use the Euler equation of the model to price core stocks, nominal bonds, foreign currencies, and commodity futures.

A.3.1 Core Stock Returns

The dividend is equal to core output net of labor cost, and we express the dividend in the unit of headline price.

$$D_t = \frac{1}{P_{h,t}} (C_{c,t} - \frac{W_t}{P_t} N_t).$$

At the steady state, labor income accounts for $(1-\alpha)\exp(-\bar{\mu})$ share of the total output, so that dividend accounts for the remaining $1 - (1-\alpha)\exp(-\bar{\mu})$ share. Log-linearize this equation around the steady state:

$$d_t = \frac{1}{1 - (1-\alpha)\exp(-\bar{\mu})} [c_{c,t} - (1-\alpha)(w_t - p_t + n_t)] - p_{h,t}.$$

To calculate the return to core stocks, we conduct a Campbell-Shiller decomposition:

$$r_{s,t+1} = \kappa_0 + \kappa_1 z_{t+1} - z_t + \Delta d_{t+1},$$

where z_t is the price-dividend ratio of the core stock and $z_t = z_\mu \mu_t + z_e c_{e,t} + z_\delta \delta_t$. The coefficients z_μ, z_e, z_δ can be solved through the Euler equation. Return loadings r_μ, r_e, r_δ

follow straightforwardly.

A.3.2 Nominal Bond Returns

Consider a one-period and a two-period default-free nominal bond. Denote $P_t^{(1)}$ the price of one-period bond at time t , and $P_t^{(2)}$ the price of two-period bond at time t . The following Euler equation prices the nominal bond.

$$E_t M_{t+1}^{\$} P_{t+1}^{(1)} = P_t^{(2)}, E_t M_{t+1}^{\$} P_t^{(1)} = 1.$$

A.3.3 Currency Returns

The pricing of foreign currencies follow $\Delta q_{t+1} = m_{t+1}^* - m_{t+1}$, as in the main text.

A.3.4 Commodity Futures

Denote F_t the price of commodity future. The following Euler equation prices the commodity future.

$$E_t M_{t+1} \frac{P_{e,t+1}}{P_{h,t+1}} = E_t M_{t+1} F_t.$$

B Proofs

B.1 Proof of Proposition 1

The model has three exogenous state variables and no endogenous state variable. After log-linearization, all variables can be written as linear functions of the three state variables. So we can postulate:

$$c_{c,t} = c_{c,\mu} \mu_t + c_{c,e} c_{e,t} + c_{c,\delta} \delta_t, \pi_t = \pi_{\mu} \mu_t + \pi_e c_{e,t} + \pi_{\delta} \delta_t.$$

We plug in the postulated solution of core output and inflation into the equations (21) and (17):

$$\begin{aligned} \pi_{\mu} \mu_t + \pi_e c_{e,t} + \pi_{\delta} \delta_t &= \beta(\rho_{\mu} \pi_{\mu} \mu_t + \rho_e \pi_e c_{e,t} + \rho_{\delta} \pi_{\delta} \delta_t) + \lambda[\kappa_c(c_{c,\mu} \mu_t + c_{c,e} c_{e,t} + c_{c,\delta} \delta_t) + \kappa_e c_{e,t} + \kappa_{\delta} \delta_t] + \lambda \mu_t \\ &\quad - \eta_c[(\rho_{\mu} - 1)c_{c,\mu} \mu_t + (\rho_e - 1)c_{c,e} c_{e,t} + (\rho_{\delta} - 1)c_{c,\delta} \delta_t] - \kappa_e[(\rho_e - 1)c_{e,t} + (\rho_{\delta} - 1)\delta_t] \end{aligned}$$

$$-(\rho_{\mu} - \phi_{\pi})\pi_{\mu} \mu_t - (\rho_e - \phi_{\pi})\pi_e c_{e,t} - (\rho_{\delta} - \phi_{\pi})\pi_{\delta} \delta_t = 0$$

These two equations need to hold for all values of μ_t , so that:

$$(1 - \beta\rho_\mu)\pi_\mu - \lambda\kappa_c c_{c,\mu} - \lambda = 0,$$

$$\eta_c(1 - \rho_\mu)c_{c,\mu} + (\phi_\pi - \rho_\mu)\pi_\mu = 0.$$

We can solve for $c_{c,\mu}$ and π_μ from the two equations:

$$c_{c,\mu} = \frac{-\lambda(\phi_\pi - \rho_\mu)}{\eta_c(1 - \rho_\mu)(1 - \beta\rho_\mu) + \lambda\kappa_c(\phi_\pi - \rho_\mu)},$$

$$\pi_\mu = -\frac{\eta_c(1 - \rho_\mu)}{\phi_\pi - \rho_\mu}c_{c,\mu} = \frac{\lambda\eta_c(1 - \rho_\mu)}{\eta_c(1 - \rho_\mu)(1 - \beta\rho_\mu) + (\phi_\pi - \rho_\mu)\lambda\kappa_c}.$$

Since $\phi_\pi > 1$, $\rho_\mu < 1$, and recall that $\eta_c > 0$, $\lambda > 0$, $\kappa_c > 0$, we can easily see $c_{c,\mu} < 0$, $\pi_\mu > 0$.

Similarly, we can derive the conditions under which the two equations hold for all values of energy supply shock, $c_{e,t}$.

$$(1 - \beta\rho_e)\pi_e - \lambda\kappa_c c_{c,e} - \lambda\kappa_e = 0,$$

$$\eta_c(1 - \rho_e)c_{c,e} + \kappa_e(1 - \rho_e) + (\phi_\pi - \rho_e)\pi_e = 0.$$

We can solve for $c_{c,e}$ and π_e from the two equations:

$$c_{c,e} = \frac{-\kappa_e \left[1 - \rho_e + \frac{\lambda(\phi_\pi - \rho_e)}{1 - \beta\rho_e} \right]}{\eta_c(1 - \rho_e) + \frac{\lambda\kappa_c(\phi_\pi - \rho_e)}{1 - \beta\rho_e}}$$

$$\pi_e = \frac{\lambda}{1 - \beta\rho_e}(\kappa_e + \kappa_c c_{c,e}) = \frac{\lambda}{1 - \beta\rho_e} \frac{\kappa_e(\eta_c - \kappa_c)(1 - \rho_e)}{\eta_c(1 - \rho_e) + \frac{\lambda\kappa_c(\phi_\pi - \rho_e)}{1 - \beta\rho_e}} = -\frac{\lambda\kappa_e(1 - \rho_e)^{\frac{\varphi+\alpha}{1-\alpha}}}{(1 - \beta\rho_e) \left[\eta_c(1 - \rho_e) + \frac{\lambda\kappa_c(\phi_\pi - \rho_e)}{1 - \beta\rho_e} \right]}$$

Since $\kappa_e < 0$, it is straightforward to see that $c_{c,e} > 0$, $\pi_e > 0$.

For the energy demand shock δ_t , we can similarly solve for $c_{c,\delta}$ and π_δ . They have almost the same expression as the energy supply shock except potential different persistence. We skip the derivation here.

B.2 Proof of Proposition 2

The real stochastic discount factor in consumption basket is equal to $M_{t+1} = \beta \left(\frac{C_{t+1}}{C_t} \right)^{-\gamma}$, where C_t is the consumption basket. After log-linearization, we have:

$$m_{t+1} = -\gamma(c_{t+1} - c_t) = -\gamma[\hat{\alpha}_c(c_{c,t+1} - c_{c,t}) + (1 - \hat{\alpha}_c)(c_{e,t+1} - c_{e,t} + \delta_{t+1} - \delta_t)]$$

$$= -\gamma[\hat{\alpha}_c c_{c,\mu}(\rho_\mu - 1)\mu_t + (\hat{\alpha}_c c_{c,e} + 1 - \hat{\alpha}_c)(\rho_e - 1)c_{e,t} + (\hat{\alpha}_c c_{c,\delta} + 1 - \hat{\alpha}_c)(\rho_\delta - 1)\delta_t]$$

$$= (-\gamma\hat{\alpha}_c c_{c,\mu})\sigma_\mu \varepsilon_{\mu,t+1} + [-\gamma(\hat{\alpha}_c c_{c,e} + 1 - \hat{\alpha}_c)]\sigma_e \varepsilon_{e,t+1} + [-\gamma(\hat{\alpha}_c c_{c,\delta} + 1 - \hat{\alpha}_c)]\sigma_\delta \varepsilon_{\delta,t+1}$$

If we write the SDF as $m_{t+1} = m_\mu(1 - \rho_\mu)\mu_t + m_e(1 - \rho_e)c_{e,t} + m_\delta(1 - \rho_\delta)\delta_t - \lambda_\mu\sigma_\mu\varepsilon_{\mu,t+1} - \lambda_e\sigma_e\varepsilon_{e,t+1} - \lambda_\delta\sigma_\delta\varepsilon_{\delta,t+1}$, we can obtain:

$$m_\mu = -\gamma\hat{\alpha}_c c_{c,\mu}(\rho_\mu - 1) < 0, m_e = -\gamma(\hat{\alpha}_c c_{c,e} + 1 - \hat{\alpha}_c)(\rho_e - 1) > 0,$$

$$m_\delta = -\gamma(\hat{\alpha}_c c_{c,e} + 1 - \hat{\alpha}_c)(\rho_\delta - 1) > 0,$$

$$\lambda_\mu = \gamma\hat{\alpha}_c c_{c,\mu} < 0, \lambda_e = \gamma(\hat{\alpha}_c c_{c,e} + 1 - \hat{\alpha}_c) > 0, \lambda_\delta = \gamma(\hat{\alpha}_c c_{c,\delta} + 1 - \hat{\alpha}_c) > 0.$$

All signs directly follow Proposition 1.

B.3 Proof of Proposition 3

Log dividend is written as:

$$\begin{aligned} d_t &= \frac{1}{1 - (1 - \alpha) \exp(-\bar{\mu})} [c_{c,t} - (1 - \alpha) \exp(-\bar{\mu})(w_t - p_t + n_t)] - p_{h,t} \\ &= \frac{1}{1 - (1 - \alpha) \exp(-\bar{\mu})} [c_{c,t} - (1 - \alpha) \exp(-\bar{\mu})(\gamma[(\hat{\alpha}_c c_{c,t} + (1 - \hat{\alpha}_c)(c_{e,t} + \delta_t)] + \frac{\varphi + 1}{1 - \alpha} c_{c,t})] - \frac{1 - \hat{\alpha}_c}{\phi} (c_{c,t} - c_{e,t} - \delta_t). \end{aligned}$$

Denote $d_t = d_\mu \mu_t + d_e c_{e,t} + d_\delta \delta_t$, we have:

$$\begin{aligned} d_\mu &= \left[\frac{1 - (1 - \alpha) \exp(-\bar{\mu})(\gamma\hat{\alpha}_c + \frac{\varphi+1}{1-\alpha})}{1 - (1 - \alpha) \exp(-\bar{\mu})} - \frac{1 - \hat{\alpha}_c}{\phi} \right] c_{c,\mu}, \\ d_e &= \left[\frac{1 - (1 - \alpha) \exp(-\bar{\mu})(\gamma\hat{\alpha}_c + \frac{\varphi+1}{1-\alpha})}{1 - (1 - \alpha) \exp(-\bar{\mu})} - \frac{1 - \hat{\alpha}_c}{\phi} \right] c_{c,e} - \frac{(1 - \alpha) \exp(-\bar{\mu})\gamma(1 - \hat{\alpha}_c)}{1 - (1 - \alpha) \exp(-\bar{\mu})} + \frac{1 - \hat{\alpha}_c}{\phi}, \\ d_\delta &= \left[\frac{1 - (1 - \alpha) \exp(-\bar{\mu})(\gamma\hat{\alpha}_c + \frac{\varphi+1}{1-\alpha})}{1 - (1 - \alpha) \exp(-\bar{\mu})} - \frac{1 - \hat{\alpha}_c}{\phi} \right] c_{c,\delta} - \frac{(1 - \alpha) \exp(-\bar{\mu})\gamma(1 - \hat{\alpha}_c)}{1 - (1 - \alpha) \exp(-\bar{\mu})} + \frac{1 - \hat{\alpha}_c}{\phi}. \end{aligned}$$

When $\exp(-\bar{\mu}) < \frac{1}{(1-\alpha)(\gamma+\frac{\varphi+1}{1-\alpha})}$, and $\hat{\alpha}_c$ is close to 1, $1 - (1 - \alpha) \exp(-\bar{\mu})(\gamma + \frac{\varphi+1}{1-\alpha}) > 0$. Therefore:

$$d_\mu < 0, d_e > 0, d_\delta > 0.$$

Note that according to Campbell-Shiller decomposition, the return to core stock can be written as:

$$r_{s,t+1} = \kappa_0 + \kappa_1 z_{t+1} - z_t + \Delta d_{t+1},$$

where z_t is the log price-dividend ratio of the core stock. Postulate that $z_t = z_\mu \mu_t + z_e c_{e,t} + z_\delta \delta_t$, then the return to core stock is equal to:

$$r_{s,t+1} = \kappa_0 + \kappa_1 (z_\mu \mu_{t+1} + z_e c_{e,t+1} + z_\delta \delta_{t+1}) - (z_\mu \mu_t + z_e c_{e,t} + z_\delta \delta_t) + \Delta d_{t+1}$$

We solve for the coefficients z_μ, z_e, z_δ from the Euler equation $E_t(m_{t+1} + r_{s,t+1}) + \frac{1}{2} \text{var}(m_{t+1} + r_{s,t+1}) = 0$.

$$E_t r_{s,t+1} = \kappa_0 + [(\kappa_1 \rho_\mu - 1)z_\mu + (\rho_\mu - 1)d_\mu] \mu_t + [(\kappa_1 \rho_e - 1)z_e + (\rho_e - 1)d_e] c_{e,t} + [(\kappa_1 \rho_\delta - 1)z_\delta + (\rho_\delta - 1)d_\delta] \delta_t$$

And:

$$E_t m_{t+1} = m_\mu (1 - \rho_\mu) \mu_t + m_e (1 - \rho_e) c_{e,t} + m_\delta (1 - \rho_\delta) \delta_t$$

Note that $\text{var}_t(m_{t+1} + r_{s,t+1})$ is a constant and the Euler equation has to hold for all values of state variables μ_t , we have the following:

$$(\kappa_1 \rho_\mu - 1)z_\mu + (\rho_\mu - 1)d_\mu + (1 - \rho_\mu)m_\mu = 0$$

We can solve for z_μ as:

$$z_\mu = \frac{1 - \rho_\mu}{1 - \kappa_1 \rho_\mu} (m_\mu - d_\mu)$$

Similarly, the following equation should hold so that the Euler equation holds for all values of $c_{e,t}$:

$$(\kappa_1 \rho_e - 1)z_e + (\rho_e - 1)d_e + (1 - \rho_e)m_e = 0$$

Solve for z_e, z_δ as:

$$z_e = \frac{1 - \rho_e}{1 - \kappa_1 \rho_e} (m_e - d_e), z_\delta = \frac{1 - \rho_\delta}{1 - \kappa_1 \rho_\delta} (m_\delta - d_\delta)$$

Then we plug in the log price-dividend ratio into the Campbell-Shiller decomposition and solve for the core stock return:

$$r_{s,\mu} = \kappa_1 z_\mu + d_\mu = \frac{\kappa_1(1-\rho_\mu)}{1-\kappa_1\rho_\mu}(m_\mu - d_\mu) + d_\mu = \frac{\kappa_1(1-\rho_\mu)}{1-\kappa_1\rho_\mu}m_\mu + \frac{1-\kappa_1}{1-\kappa_1\rho_\mu}d_\mu < 0,$$

$$r_{s,e} = \frac{\kappa_1(1-\rho_e)}{1-\kappa_1\rho_e}m_e + \frac{1-\kappa_1}{1-\kappa_1\rho_e}d_e > 0, r_{s,\delta} = \frac{\kappa_1(1-\rho_\delta)}{1-\kappa_1\rho_\delta}m_\delta + \frac{1-\kappa_1}{1-\kappa_1\rho_\delta}d_\delta > 0.$$

B.4 Proof of Proposition 4

We use the nominal SDF of the households to price the nominal bonds. Consider the two-period bond issued at time t at price $P_t^{(2)}$. At time $t+1$, the bond price becomes $P_{t+1}^{(1)}$. Therefore, the following Euler equations hold for the two-period bond and one-period bond:

$$E_t M_{t+1}^\$ P_{t+1}^{(1)} = P_t^{(2)}, E_t M_{t+1}^\$ = P_t^{(1)}.$$

Take logs on both sides:

$$p_t^{(1)} = p_0^{(1)} + E_t m_{t+1}^\$$$

$$p_t^{(2)} = p_0^{(2)} + E_t m_{t+1}^\$ + E_t p_{t+1}^{(1)}$$

where $p_0^{(1)}$ and $p_0^{(2)}$ are constants that originate from the second-order moments.

$$\begin{aligned} E_t m_{t+1}^\$ &= m_\mu(1-\rho_\mu)\mu_t + m_e(1-\rho_e)c_{e,t} + m_\delta(1-\rho_\delta)\delta_t \\ &\quad - \frac{1-\hat{\alpha}_c}{\phi} E_t (c_{c,t+1} - c_{c,t} - c_{e,t+1} + c_{e,t} - \delta_{t+1} + \delta_t) - E_t \pi_{t+1} \end{aligned}$$

We rewrite $E_t m_{t+1}^\$ = m_\mu^\$ \mu_t + m_\delta^\$ \delta_t + m_e^\$ c_{e,t}$, where

$$m_\mu^\$ = m_\mu(1-\rho_\mu) + \frac{1-\hat{\alpha}_c}{\phi}(1-\rho_\mu)c_{c,\mu} - \rho_\mu \pi_\mu,$$

$$m_e^\$ = m_e(1-\rho_e) + \frac{1-\hat{\alpha}_c}{\phi} [(1-\rho_e)(c_{c,e}-1)] - \rho_e \pi_e, m_\delta^\$ = m_\delta(1-\rho_\delta) + \frac{1-\hat{\alpha}_c}{\phi} [(1-\rho_\delta)(c_{c,\delta}-1)] - \rho_\delta \pi_\delta.$$

As $m_\mu < 0$, $c_{c,\mu} < 0$, $\pi_\mu > 0$, it is straightforward that $m_\mu^\$ < 0$.

Recall that $m_e = \gamma(\hat{\alpha}_c c_{c,e} + 1 - \hat{\alpha}_c)$, thus

$$m_e^\$ = (1-\rho_e) \left[m_e + \frac{1-\hat{\alpha}_c}{\phi} (c_{c,e} - 1) \right] = (1-\rho_e)(\eta_c c_{c,e} + \kappa_e) - \rho_e \pi_e < 0$$

The last inequality comes from that fact that $\eta_c c_{c,e} + \kappa_e < 0$, which is from the proof of Proposition 1. Similarly, $m_\delta^\$ < 0$.

The return to a long-term bond is equal to $r_{b,t+1} = p_{t+1}^{(1)} - p_t^{(2)} = \text{const} + E_{t+1}m_{t+2}^{\$} - (E_t m_{t+1}^{\$} + E_t p_{t+1}^{(1)})$. We decompose $r_{b,t+1}$ into predictable component $r_{b0,t}$ and unpredictable component $r_{b,\mu}\sigma_{\mu}\varepsilon_{t+1} + r_{b,e}\sigma_e\varepsilon_{e,t+1} + r_{b,\delta}\sigma_{\delta}\varepsilon_{\delta,t+1}$, we have:

$$r_{b,\mu} = m_{\mu}^{\$} < 0, r_{b,\delta} = m_{\delta}^{\$} < 0, r_{b,e} = m_e^{\$} < 0.$$

B.5 Proof of Proposition 5

The exposure of nominal foreign currency return to the three shocks are:

$$r_{fx,\mu} = \lambda_{\mu} + \frac{1 - \hat{\alpha}_c}{\phi} c_{c,\mu} + \pi_{\mu} = \gamma \hat{\alpha}_c c_{c,\mu} + \frac{1 - \hat{\alpha}_c}{\phi} c_{c,\mu} - \frac{\left(\gamma \hat{\alpha}_c + \frac{1 - \hat{\alpha}_c}{\phi}\right) (1 - \rho_{\mu})}{\phi_{\pi} - \rho_{\mu}} c_{c,\mu} = \frac{\phi_{\pi} - 1}{\phi_{\pi} - \rho_{\mu}} \left(\gamma \hat{\alpha}_c + \frac{1 - \hat{\alpha}_c}{\phi}\right) c_{c,\mu}$$

$$r_{fx,e} = \lambda_e + \frac{1 - \hat{\alpha}_c}{\phi} (c_{c,e} - 1) + \pi_e = \left(\eta_c + \frac{\lambda \kappa_c}{1 - \beta \rho_e}\right) c_{c,e} + \left(\frac{\lambda}{1 - \beta \rho_e} + 1\right) \kappa_e$$

Though we cannot determine conclusively on the signs of $r_{fx,e}$, we can see the three forces. Real SDF's loading on energy supply shock is $\lambda_e > 0$. The relative headline price loading is $\frac{1 - \hat{\alpha}_c}{\phi} (c_{c,e} - 1) < 0$, and the core good inflation loading is $\pi_e > 0$. The signs of loadings on energy demand shock are similar.

B.6 Proof of Proposition 6

Commodity futures satisfy the following Euler equation:

$$E_t M_{t+1} \frac{P_{e,t+1}}{P_{h,t+1}} = E_t M_{t+1} F_t$$

Taking log on both sides:

$$f_t = f_0 + E_t(p_{e,t+1} - p_{h,t+1}) = f_0 + E_t[p_{e,t+1} - (1 - \hat{\alpha}_c)(p_{e,t+1} - \delta_{t+1})]$$

$$= \frac{\hat{\alpha}_c}{\phi} c_{c,\mu} \rho_{\mu} \mu_t + \frac{\hat{\alpha}_c}{\phi} (c_{c,e} - 1) \rho_e c_{e,t} + \left[\hat{\alpha}_c \left(\frac{\phi - 1}{\phi} + \frac{1}{\phi} c_{c,\delta} \right) + (1 - \hat{\alpha}_c) \right] \rho_{\delta} \delta_t$$

Straightforwardly, $f_{\mu} < 0, f_e < 0, f_{\delta} > 0$.

C Additional Empirical Results

C.1 VAR Estimates

Table C1 reports the VAR coefficient matrix and their statistical significance.

Table C1: Shocks to Expected Inflation

	A. Risk Exposure		
	core	food	energy
core(-1)	0.46 (7.41)	0.16 (1.11)	1.74 (2.15)
food(-1)	0.08 (2.98)	0.27 (4.04)	0.28 (0.77)
inflation(-1)	0.01 (1.22)	0.02 (1.21)	-0.02 (-0.29)
rf(-1)	0.15 (3.01)	0.01 (0.05)	0.00 (-0.00)
pd(-1)	-1.23 (-3.19)	-1.54 (-1.68)	6.11 (1.21)
output gap(-1)	0.06 (1.31)	0.32 (2.90)	0.31 (0.50)
R^2	0.70	0.26	0.04

Notes: This table reports estimates of VAR(1). The t -statistics are in the parentheses. The VAR includes the core, food, and energy inflation, the risk-free rate, price-dividend ratio, and the output gap.

C.2 Inflation Expectation from Surveys

The survey of forecast has been widely used in studies of inflation. Though we focus on core and energy inflation separately, only core inflation is relatively persistent and predictable. Therefore, we use measures of headline inflation expectations as proxies for both headline and core inflation expectations. Specifically, we use the survey of professional forecast (SPF) and the Survey of Consumers, University of Michigan (MICH). The two survey series start at a later date, with the SPF starting in 1981Q3 and the MICH starting in 1978Q1.

The following tables show the results with the 8 average portfolios when we construct the headline and core inflation shocks as the difference between realized inflation and the inflation expectations. The results are largely similar with the ones presented in the main text, which confirms the robustness of our results.

Table C2: Inflation Expectations: Survey of Professional Forecast

			A. Headline		B. Core and Energy			
	Mean	S.D.	headline β	t -stat	core β	t -stat	energy β	t -stat
Stock	8.83	16.40	0.87	(0.77)	-4.93	(-1.73)	0.26	(2.16)
Treasury	3.99	6.80	-2.57	(-6.15)	-3.00	(-2.72)	-0.19	(-4.17)
Agency	3.30	4.15	-1.39	(-5.30)	-2.09	(-3.03)	-0.08	(-2.90)
Corporate	4.49	5.17	-0.88	(-2.54)	-2.28	(-2.55)	-0.01	(-0.33)
Currency	1.76	7.05	1.04	(2.02)	0.39	(0.22)	0.12	(2.36)
Commodity	2.43	22.27	10.90	(8.74)	2.58	(0.83)	1.23	(9.35)
REIT	8.11	17.19	1.02	(0.87)	-7.22	(-2.46)	0.32	(2.60)
Intl Stock	7.59	16.21	0.60	(0.54)	-4.20	(-1.49)	0.24	(2.01)

	C. Price of Risk			
	8 Average Portfolios		38 Portfolios	
headline λ	0.22		0.09	
t -stat	(0.69)		(0.29)	
core λ			-1.28	-1.32
t -stat			(-2.24)	(-2.72)
energy λ			4.47	7.07
t -stat			(1.02)	(1.40)
R^2	0.43	0.84	0.40	0.73

Notes: Panels A and B of this table reports the regression results of the specification $r_{i,t}^e = \alpha_i + \beta_{\pi}^i \varepsilon_{\pi,t} + u_{i,t}$ for 8 average portfolios in each asset class. Panel A uses headline inflation shock as the risk factor. Panel B uses core and energy inflation jointly as risk factors. Panel C reports the price of risk estimates. The t -statistics are in the parentheses.

Table C3: Inflation Expectations: Surveys of Consumers, University of Michigan

			A. Headline		B. Core and Energy			
	Mean	S.D.	headline β	t -stat	core β	t -stat	energy β	t -stat
Stock	8.53	16.40	0.33	(0.32)	-2.81	(-1.74)	0.22	(1.91)
Treasury	2.93	7.50	-2.47	(-5.81)	-1.97	(-2.83)	-0.21	(-4.19)
Agency	2.47	5.11	-1.38	(-4.61)	-1.25	(-2.57)	-0.11	(-2.99)
Corporate	3.40	6.21	-1.17	(-3.13)	-1.70	(-2.79)	-0.04	(-0.89)
Currency	1.76	7.05	1.11	(2.24)	0.78	(0.72)	0.12	(2.35)
Commodity	2.34	21.91	8.89	(7.59)	0.81	(0.45)	1.16	(8.86)
REIT	7.96	17.46	-0.10	(-0.08)	-5.36	(-3.02)	0.29	(2.34)
Intl Stock	7.13	16.11	0.17	(0.17)	-2.57	(-1.61)	0.20	(1.75)

	C. Price of Risk			
	8 Average Portfolios		38 Portfolios	
headline λ	0.13		0.05	
t -stat	(0.36)		(0.15)	
core λ			-1.75	-1.57
t -stat			(-2.47)	(-2.76)
energy λ			3.60	8.26
t -stat			(0.93)	(1.93)
R^2	0.42		0.77	0.61

Notes: Panels A and B of this table reports the regression results of the specification $r_{i,t}^e = \alpha_i + \beta_{\pi}^i \varepsilon_{\pi,t} + u_{i,t}$ for 8 average portfolios in each asset class. Panel A uses headline inflation shock as the risk factor. Panel B uses core and energy inflation jointly as risk factors. Panel C reports the price of risk estimates. The t -statistics are in the parentheses.

C.3 GMM Estimation

In this section, we report the standard errors of prices of inflation risks with GMM estimation. The moment conditions are written as:

$$E_T \begin{bmatrix} (1 - b' \varepsilon_{\pi,t}) r_t \\ \lambda - b' \varepsilon_{\pi,t} \varepsilon'_{\pi,t} \end{bmatrix} = 0$$

where $m_t = 1 - b' \varepsilon_{\pi,t}$ is the stochastic discount factor, $\varepsilon_{\pi,t}$ is the corresponding inflation risk factor, λ is the price of risk, and E_T is the operator of time-series average.

Table C4 reports the estimation results. These estimates are identical in sign and significance with the estimates obtained using the two-step Fama-MacBeth approach and very similar in magnitude.

Table C4: Price of Inflation Risks

	A. 8 Average Portfolios	B. 38 Portfolios
headline λ	0.13	-0.12
<i>t</i> -stat	(0.45)	(-0.48)
core λ	-1.04	-1.07
<i>t</i> -stat	(-2.92)	(-3.77)
energy λ	3.86	3.81
<i>t</i> -stat	(1.37)	(1.77)

Notes: This table reports the price of risk estimated using the GMM. Panel A uses the 8 average portfolios from each asset class as test portfolios. Panel B uses the 38 portfolios as. In each panel, the first column reports the price of headline inflation and the second column reports the price of core and energy inflation. Standard errors are Newey-West adjusted.

C.4 The Use of PCE Inflation

Table C5 replaces the inflation measured as consumer price index with personal consumption expenditure (PCE) for the 8 average portfolios. All results are robust to the alternative measure of PCE inflation.

Table C5: Inflation Shocks: Personal Consumption Expenditure

			A. Headline		B. Core and Energy			
	Mean	S.D.	headline β	t -stat	core β	t -stat	energy β	t -stat
Stock	6.80	16.79	-1.42	(-1.08)	-5.31	(-2.32)	0.18	(1.58)
Treasury	2.07	6.90	-3.57	(-7.32)	-3.79	(-4.40)	-0.20	(-4.57)
Agency	2.44	5.10	-2.50	(-6.11)	-3.43	(-4.55)	-0.09	(-2.78)
Corporate	3.08	6.39	-2.28	(-4.57)	-3.89	(-4.35)	-0.04	(-0.99)
Currency	1.76	7.05	1.62	(2.28)	0.59	(0.44)	0.13	(2.47)
Commodity	4.47	21.90	10.46	(6.54)	0.42	(0.16)	1.07	(7.99)
REIT	7.96	17.46	1.06	(0.66)	-2.52	(-0.86)	0.22	(1.71)
Intl Stock	6.09	16.53	-0.95	(-0.72)	-4.55	(-1.93)	0.17	(1.46)

	C. Price of Risk			
	8 Average Portfolios		38 Portfolios	
headline λ	0.16		-0.04	
t -stat	(0.69)		(-0.23)	
core λ			-1.09	
t -stat			(-2.61)	
energy λ			5.83	
t -stat			(1.60)	
R^2	0.45		0.59	
			0.41	
			0.64	

Notes: Panels A and B of this table reports the regression results of the specification $r_{i,t}^e = \alpha_i + \beta_{\pi}^i \varepsilon_{\pi,t} + u_{i,t}$ for 8 average portfolios in each asset class. Panel A uses headline inflation shock as the risk factor. Panel B uses core and energy inflation jointly as risk factors. Panel C reports the price of risk estimates. The t -statistics are in the parentheses.

C.5 Betas at Lower Frequency

In this section, we report empirical results with low-frequency betas. This approach follows Bansal et al. (2005) and Lettau et al. (2019). In the first-step of regression, we regress the cumulative asset return from quarter $t - \tau$ to quarter t on the unexpected inflation from quarter $t - \tau$ to quarter t .

$$r_{t-\tau,t} = a + \beta \varepsilon_{\pi,t-\tau,t} + u_t$$

The unexpected inflation over the τ quarters is computed from the VAR system $Y_t = c + \Phi Y_{t-1} + u_t$.

$$\begin{aligned} \varepsilon_{\pi,t-\tau,t} &= \sum_{j=0}^{\tau-1} (Y_{t-j} - E_{t-\tau} Y_{t-j}) = \sum_{j=0}^{\tau-1} Y_{t-j} - hc[(I - A)^{-1}(I - A^\tau)] - \sum_{j=0}^{\tau-1} Y_{t-\tau} A^{\tau-j} \\ &= \sum_{j=0}^{\tau-1} Y_{t-j} - \tau c[(I - A)^{-1}(I - A^\tau)] - Y_{t-\tau} [(I - A)^{-1}(I - A^{\tau+1}) - I] \end{aligned}$$

$\varepsilon_{\pi,t-\tau,t}$ are the corresponding rows of the vector. The covariation over longer-horizon captures the low-frequency relation between inflation and asset prices. $r_{t-\tau,t}$ is the cumulative asset excess return from quarter $t - \tau$ to t . We select $\tau = 8$ and examine the covariation at the eight-quarter frequency. Table C6 reports the β 's prices of risks using the 8 average portfolios .

The asset loadings and price of risks are largely identical with the ones presented in the main text. The only difference is that the price of energy inflation is positive and statistically significant. One potential reason is that energy inflation is quite noisy at higher frequency, which contaminates the beta estimates and hinders the discovery of its price of risk. When we look at the lower-frequency covariation, energy inflation carries a positive risk premium, i.e., a higher energy inflation indicates good news for investors.

Table C6: Eight-Quarter Inflation Exposure and Price of Risk

A. Asset Return Exposure				
	core	<i>t</i> -stat	energy	<i>t</i> -stat
Stock	-4.17	(-3.19)	0.40	(1.41)
Treasury	-1.45	(-2.16)	-0.20	(-2.77)
Agency	-2.10	(-6.94)	-0.11	(-2.57)
Corporate	-2.62	(-4.12)	-0.04	(-0.37)
Currency	-3.01	(-1.39)	0.24	(1.98)
Commodity	-4.64	(-3.09)	2.00	(6.07)
REIT	-1.76	(-0.59)	0.76	(1.77)
IntlStock	-4.68	(-3.78)	0.34	(0.92)

B. Price of Risk		
	8 Average Portfolios	38 Portfolios
sticky λ	-1.19	-1.14
<i>t</i> -stat	(-2.86)	(-3.36)
flexible λ	1.50	3.16
<i>t</i> -stat	(0.73)	(1.35)
R^2	0.50	0.31

Notes: This table reports the two-step asset pricing results for core and energy inflation. Panel A reports the asset return exposures for the 8 average portfolios. The betas are computed by regressing 8-quarter cumulative excess returns on 8 quarter inflation shocks. Panel B reports the price of risk estimates for both 8 portfolios and 38 portfolios. The *t*-statistics are in the parentheses.

C.6 Shocks to Expected Inflation

This section reports the asset pricing test results for 7 average portfolios with respect to the shock to expected core inflation. The shock to expected core inflation is constructed as $A\varepsilon_{\pi,t}$, where A is the coefficient matrix in the VAR. The shock to expected core inflation is highly correlated with the shock to core inflation itself, so the asset pricing rests are similar, too. The correlation between shocks to core inflation and shocks to expected core inflation is 0.90.

Table C7: Shocks to Expected Inflation

A. Risk Exposure				
	shock to core expectation	<i>t</i> -stat	energy shock	<i>t</i> -stat
Stock	-14.74	(-6.10)	0.36	(3.13)
Treasury	-5.03	(-5.21)	-0.16	(-3.50)
Agency	-4.98	(-5.78)	-0.05	(-1.49)
Corporate	-6.53	(-6.71)	0.01	(0.35)
Currency	-3.19	(-1.20)	0.16	(2.72)
Commodity	2.66	(0.86)	1.06	(7.61)
REIT	-14.06	(-4.16)	0.44	(3.44)
IntlStock	-14.29	(-5.74)	0.33	(2.94)

C. Price of Risk		
	8 Average Portfolios	38 Portfolios
shock to core expectation	-0.40	-0.41
<i>t</i> -stat	(-2.88)	(-3.37)
energy shock	4.87	4.20
<i>t</i> -stat	(1.81)	(1.61)
R^2	0.95	0.84

Notes: This table reports the two-step asset pricing results for shock to core inflation expectation and energy shock. Panel A reports the asset return exposures for the 8 average portfolios, and Panel B reports the price of risk estimates for both 8 portfolios and 38 portfolios. The *t*-statistics are in the parentheses.

D The Extended Model

In this section, we present an extended version of the model in the main text. All asset pricing implications of the model carries through to the extended one. The goal of the extension is to break down the consumption CAPM. This way, the model is consistent with the empirical fact that controlling for consumption growth does not drive out the risk premium of core inflation.

D.1 Model Setting

The extended model is similar with the one in the main text in the preference on consumption, production technology, price stickiness and monopolistic competitive goods market structure. The only difference is that there are two types of agents, workers (fraction θ_w) and shareholders (fraction $1 - \theta_w$). Workers supply labor and do not participate in the financial market. Shareholders own the equity claims of core firms. Energy goods are pro-rata endowed. Variables with superscript w are associated with workers, and those with superscript e are associated with shareholders. We briefly outline the equilibrium conditions here.

D.1.1 Workers

The consumption-labor marginal optimality condition for workers is:

$$\frac{(C_t^w)^{-\gamma}}{P_t P_{ht}} = \frac{N_t^\varphi}{W_t}.$$

D.1.2 Shareholders

The Euler equations for shareholders are:

$$E_t \beta \left(\frac{C_{t+1}^s}{C_t^s} \right)^{-\gamma} \frac{P_{ht} P_t}{P_{h,t+1} P_{t+1}} (1 + i_t) = 1,$$
$$E_t \beta \left(\frac{C_{t+1}^s}{C_t^s} \right)^{-\gamma} \frac{P_{ht} P_t}{P_{h,t+1} P_{t+1}} \frac{D_{t+1} + P_{s,t+1}}{P_{s,t}} = 1.$$

D.1.3 Consumption Aggregation

For both workers and shareholders ($i = w, s$), the consumption basket is defined as:

$$C^i = \left[\alpha_c (C_e^i)^{\frac{\phi-1}{\phi}} + (1 - \alpha_c) [\exp(\delta) C_e^i]^{\frac{\phi-1}{\phi}} \right]^{\frac{\phi}{\phi-1}}.$$

The relative price of energy satisfies:

$$P_e = \frac{1 - \alpha_c}{\alpha_c} \left(\frac{C_e^i}{C_c^i} \right)^{-\frac{1}{\phi}} \exp \left(\frac{\phi - 1}{\phi} \delta \right).$$

The headline price satisfies:

$$P_h = \left\{ \alpha_c^\phi + (1 - \alpha_c)^\phi [\exp(-\delta) P_e]^{1-\phi} \right\}^{\frac{1}{1-\phi}}.$$

D.1.4 Productive Core Firms

Each core firm produces one variety of core good and each firm is monopolistic in the specific variety production. All varieties are aggregated into core consumption in a CES manner, with elasticity of substitution ϕ . Production technology for variety j is:

$$Y_t(j) = AN_t(j)^{1-\alpha}.$$

The marginal cost of production, similar with the model in the main text, is:

$$MC(Y) = \frac{W}{P} \frac{1}{(1-\alpha)Y} \left(\frac{Y}{A} \right)^{\frac{1}{1-\alpha}}.$$

Since the aggregator labor supply in the economy is equal to $\theta_w N$, we normalize the aggregate TFP $A = \theta_w^{-(1-\alpha)}$. The New Keynesian Phillips Curve is written as

$$\sum_{k=0}^{\infty} (\beta\theta)^k E_t \left\{ \frac{u'(C_{t+k}^s)}{u'(C_t^s)} \frac{P_{ht}}{P_{h,t+1}} \left[Y_{t+k|t} + (P_t^* - \Psi'(Y_{t+k|t})) \frac{\partial Y_{t+k|t}}{\partial P_t^*} \right] \right\} = 0.$$

where:

$$\frac{\partial Y_{t+k|t}}{\partial P_t^*} = -\varepsilon_{t+k} \left(\frac{P_t^*}{P_{t+k}} \right)^{-\varepsilon_{t+k}} \frac{C_{C,t+k}}{P_t^*} = -\varepsilon_{t+k} \frac{Y_{t+k|t}}{P_t^*}.$$

D.1.5 Market Clearing Conditions

There are two types of agents, so we need to include the aggregate budget constraint of one type of agent in the system of equations that consist of the equilibrium.

$$\theta_w (C_{ct}^w + P_{et} C_{et}^w) = \frac{W_t}{P_t} N_t \theta_w + P_{et} \theta_w Q_t.$$

The two market clearing conditions are:

$$\theta_w C_c^w + (1 - \theta_w) C_c^s = Y,$$

$$\theta_w C_e^w + (1 - \theta_w) C_e^s = C_e.$$

D.1.6 Monetary Policy

The monetary policy follows a Taylor rule:

$$i_t = \bar{i} + \phi_\pi \pi_t.$$

D.2 Log-linearization

When we log-linearize the system of equations, we make a parametric assumption to keep the algebra simplified: $\theta_w = (1 - \alpha) \exp(-\bar{\mu})$. At the steady state, labor income share is equal to $(1 - \alpha) \exp(-\bar{\mu})$. With our parametric assumption, the fraction of workers is equal to the steady state labor income share, the per capital consumption of core and energy goods are identical for workers and entrepreneurs at the steady state.

In the extended model, we make an additional parametric assumption that $\hat{\alpha}_c \rightarrow 1$. In the data energy inflation only accounts for about 10 percent of the headline inflation. This assumption can greatly simplify algebra in deriving the solutions.

The equilibrium of the economy satisfies the following log-linearized three-equation system with three unknowns: $c_{ct}^s, c_{et}^s, \pi_t$. The three equations are the Phillips curve, the Euler equation of the shareholders, and the workers' budget constraint.

$$\pi_t = \beta E_t \pi_{t+1} + \lambda \mu_t + \lambda \left[\frac{\varphi + \alpha}{1 - \alpha} y_t + \gamma (\hat{\alpha}_c c_{ct}^w + (1 - \hat{\alpha}_c)(c_{et}^w + \delta_t)) + \frac{1 - \hat{\alpha}_c}{\phi} (c_{ct}^s - c_{et}^s - \delta_t) \right]$$

$$-\gamma E_t [\hat{\alpha}_c (c_{c,t+1}^s - c_{ct}^s) + (1 - \hat{\alpha}_c)(c_{e,t+1}^s - c_{et}^s + \delta_{t+1} - \delta_t)] - E_t \pi_{t+1},$$

$$-\frac{1 - \hat{\alpha}_c}{\phi} E_t \Delta (c_{c,t+1}^s - c_{e,t+1}^s - \delta_{t+1}) + \phi_\pi \pi_t = 0,$$

$$\hat{\alpha}_c c_{ct}^w + (1 - \hat{\alpha}_c) c_{et}^w = \hat{\alpha}_c \left[\gamma (\hat{\alpha}_c c_{ct}^w + (1 - \hat{\alpha}_c)(c_{et}^w + \delta_t)) + \frac{\varphi + 1}{1 - \alpha} y_t + \frac{1 - \hat{\alpha}_c}{\phi} (c_{ct}^s - c_{et}^s - \delta_t) \right] + (1 - \hat{\alpha}_c) c_{et},$$

where: $c_{ct}^w = \frac{1}{\theta_w} (c_{ct} - c_{et}^s) + c_{ct}^s$, $c_{et}^w = \frac{1}{\theta_w} [c_{et} - (1 - \theta_w) c_{et}^s]$, $y_t = c_{et} - c_{et}^s + c_{ct}^s$, which can

be straightforwardly derived from the relative price of energy good and the market clearing conditions.

D.3 Solution

We can express all the variables as linear functions of the three exogenous variables, μ_t, c_{et}, δ_t . Let:

$$c_{ct}^s = c_\mu \mu_t + c_e c_{et} + c_\delta \delta_t, c_{et}^s = e_\mu \mu_t + e_e c_{et} + e_\delta \delta_t, \pi_t = \pi_\mu \mu_t + \pi_e c_{et} + \pi_\delta \delta_t.$$

We keep the same assumption that the steady state level of markup is sufficiently large, and $\frac{1}{\gamma} > \phi > 1$.

D.3.1 Markup Shock

We can solve for the undetermined coefficients as follows:

$$c_\mu = \frac{\lambda}{(1 - \beta \rho_\mu) y_\mu - \lambda \left[\frac{\varphi + \alpha}{1 - \alpha} (1 - x_\mu) + \gamma \left(1 - \frac{x_\mu}{\theta_w} \right) \right]},$$

where:

$$x_\mu = \theta_w + \frac{\frac{\varphi + 1}{1 - \alpha} (\theta_w - \theta_w^2)}{-1 + \gamma + \frac{\varphi + 1}{1 - \alpha} \theta_w} < 0, y_\mu = -\frac{\gamma (1 - \rho_\mu)}{\phi_\pi - \rho_\mu} < 0,$$

$$e_\mu = x_\mu c_\mu, \pi_\mu = y_\mu c_\mu.$$

Therefore, $c_\mu < 0, e_\mu > 0, \pi_\mu > 0$.

The core output loading on the markup shock is equal to $y_\mu = c_\mu - e_\mu = c_\mu (1 - x) < 0$.

D.3.2 Energy Demand Shock

$$\pi_\delta = \frac{\frac{\varphi + \alpha}{1 - \alpha} \frac{1}{\gamma} \left(\frac{1}{\phi} - \gamma \right)}{\left(\frac{\varphi + \alpha}{1 - \alpha} \frac{1}{\gamma} + 1 \right) \frac{\phi_\pi - \rho_\delta}{1 - \rho_\delta} + \frac{1 - \beta \rho_\delta}{\lambda} \left(1 - \frac{\gamma}{1 - \theta_w} - \frac{\theta_w}{1 - \theta_w} \frac{\varphi + \alpha}{1 - \alpha} \right)} (1 - \hat{\alpha}_c) > 0,$$

$$c_\delta = \frac{1}{\gamma} \left(\frac{1}{\phi} - \gamma \right) (1 - \hat{\alpha}_c) - \frac{1}{\gamma} \frac{\phi_\pi - \rho_\delta}{1 - \rho_\delta} \pi_\delta > 0,$$

$$e_\delta = -\frac{1 - \beta \rho_\delta}{\lambda} \frac{\theta_w}{1 - \theta_w} < 0.$$

Thus, core output loading is equal to $y_\delta = c_\delta - e_\delta > 0$.

D.3.3 Energy Supply Shock

As in the main text, energy supply and demand shock plays exactly the same role, i.e.:

$$c_e > 0, \pi_e > 0, e_e - 1 < 0, y_e = c_e - (e_e - 1) > 0.$$

D.4 Dividend

In this section, we solve for the dividend loading on the three shocks. The dividend can be written as:

$$\begin{aligned} d_t &= \frac{1}{1 - \theta_w} [y_t - \theta_w(w_t - p_t - n_t)] - p_{ht} \\ &= \frac{1}{1 - \theta_w} \left[y_t - \theta_w \left(\frac{\varphi}{1 - \alpha} y_t + \gamma(\hat{\alpha}_c c_{ct}^w + (1 - \hat{\alpha}_c)(c_{et}^w + \delta_t)) + \frac{1 - \hat{\alpha}_c}{\phi} (c_{ct}^s - c_{et}^s - \delta_t) + \frac{1}{1 - \alpha} y_t \right) \right] \\ &\quad - \frac{1 - \hat{\alpha}_c}{\phi} (c_{ct}^e - c_{et}^e - \delta_t). \end{aligned}$$

Apply the assumption that $\hat{\alpha}_c$ being close to 1, we can derive

$$\begin{aligned} d_\mu &= \frac{1}{1 - \theta_w} \left[\left(1 - \frac{(\varphi + 1)\theta_w}{1 - \alpha} \right) (c_\mu - e_\mu) - \theta_w \gamma (c_\mu - \frac{1}{\theta_w} e_\mu) \right] < 0, \\ d_\delta &= \left[1 - \theta_w \left(\frac{\varphi + 1}{1 - \alpha} + \gamma \right) \right] c_\delta + \left(-1 + \gamma + \frac{\varphi + 1}{1 - \alpha} \theta_w \right) e_\delta + \theta_w \left(\frac{1}{\phi} - \gamma \right) (1 - \hat{\alpha}_c) + \frac{(1 - \theta_w)(1 - \hat{\alpha}_c)}{\phi} \\ &> (1 - \theta_w) \gamma c_\delta + \theta_w \left(\frac{1}{\phi} - \gamma \right) (1 - \hat{\alpha}_c) \frac{(1 - \theta_w)(1 - \hat{\alpha}_c)}{\phi} > 0. \end{aligned}$$

The inequality comes from the fact that $\theta_w < \frac{(1 - \alpha)(1 - \gamma)}{1 + \varphi}$. The sign of d_e is the same as d_δ .

D.5 The Stochastic Discount Factor

The stochastic discount factor is written as:

$$m_{t+1} = m_\mu(1 - \rho_\mu)\mu_t + m_e(1 - \rho_e)c_{et} + m_\delta(1 - \rho_\delta)\delta_t - \lambda_\mu\sigma_\mu\varepsilon_{\mu,t+1} - \lambda_e\sigma_e\varepsilon_{e,t+1} - \lambda_\delta\sigma_\delta\varepsilon_{\delta,t+1}.$$

In this model, only the shareholders' consumption matters for asset pricing:

$$m_{t+1} = -\gamma(c_{t+1}^s - c_t^s) = -\gamma[\hat{\alpha}_c(c_{c,t+1}^s - c_{c,t}^s) + (1 - \hat{\alpha}_c)(c_{e,t+1}^s - c_{e,t}^s + \delta_{t+1} - \delta_t)].$$

It is straightforward to derive that:

$$\lambda_\mu = \gamma c_\mu < 0, \lambda_\delta = \gamma c_\delta + \gamma(1 - \hat{\alpha}_c) > 0, \lambda_e = \gamma c_e + \gamma(1 - \hat{\alpha}_c) > 0,$$

$$m_\mu = \gamma c_\mu < 0, m_\delta = \gamma c_\delta + \gamma(1 - \hat{\alpha}_c) > 0, m_e = \gamma c_e + \gamma(1 - \hat{\alpha}_c) > 0.$$

D.6 Nominal SDF and Asset Prices

From the main text, we see that returns to core stocks, currencies, and commodities only depend on loadings of dividend and SDF on the three shocks. All derivations in the main text apply in the extended model. For bond returns, we need to derive the asset return loadings using the nominal SDF. We derive the loadings of nominal SDFs here as well, $E_t m_{t+1}^\$ = E_t m_{t+1} - E_t \pi_{t+1} - E_t (p_{h,t+1} - p_{h,t})$.

$$m_\mu^\$ = m_\mu(1 - \rho_\mu) - \rho_\mu \pi_\mu + \frac{1 - \hat{\alpha}_c}{\phi} (c_\mu - e_\mu)(1 - \rho_\mu) < 0,$$

$$m_\delta^\$ = m_\delta(1 - \rho_\delta) - \rho_\delta \pi_\delta + \frac{1 - \hat{\alpha}_c}{\phi} (c_\delta - e_\delta - 1)(1 - \rho_\delta)$$

$$= (1 - \rho_\delta) \left[\gamma c_\delta + (1 - \hat{\alpha}_c) \left(\gamma - \frac{1}{\phi} \right) - \rho_\delta \pi_\delta \right].$$

Since $-\gamma c_\delta + \left(\frac{1}{\phi} - \gamma \right) (1 - \hat{\alpha}_c) = \frac{\phi \pi - \rho_\delta}{1 - \rho_\delta} \pi_\delta$, $m_\delta^\$ = (1 - \rho_\delta) \left(-\rho_\delta - \frac{\phi \pi - \rho_\delta}{1 - \rho_\delta} \right) \pi_\delta < 0$. Similarly, $m_e^\$ < 0$.

Since the sign of real and nominal SDF loadings and dividend loadings are exactly the same as in the model presented in the main text, all asset return loadings are identical, too. We skip all the derivations of asset prices here for the extended model.